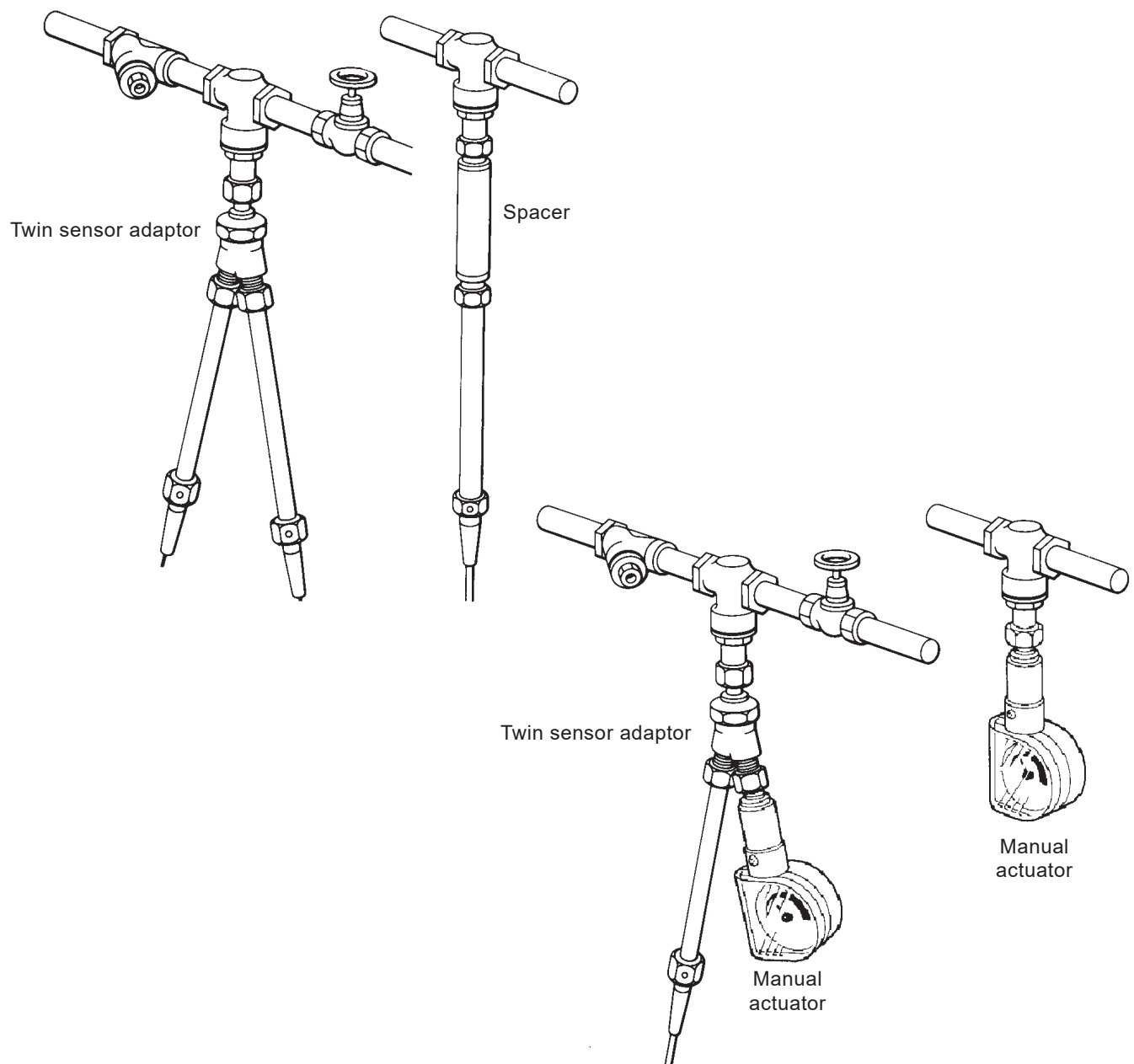




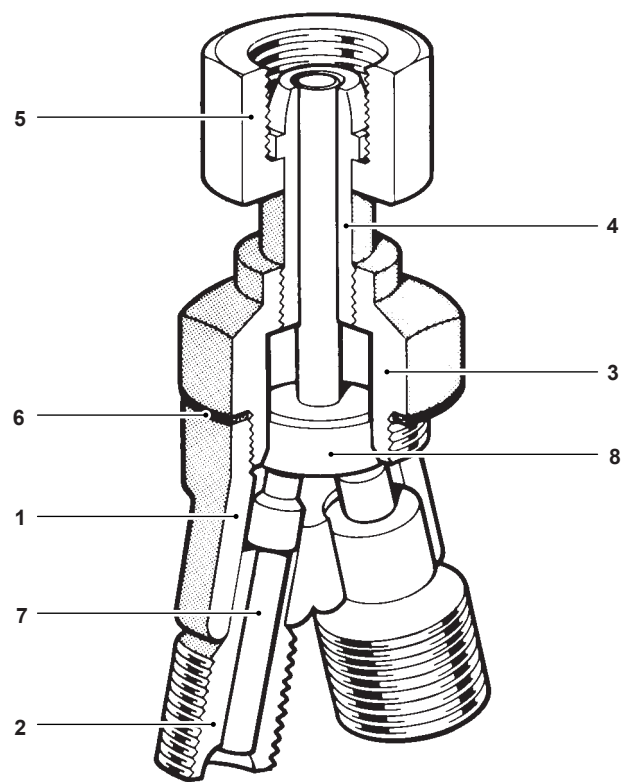
Temperature Control Ancillaries

Twin sensor adaptor

When coupled to a 2 port or 3 port valve allows the valve to be operated by either actuator.



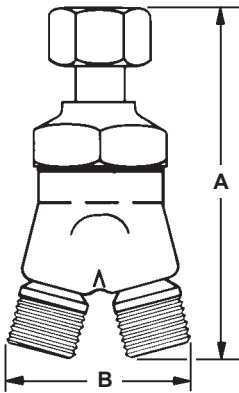
Materials



No.	Part	Material	
1	Body	Brass	BS 2872 CZ 122
2	Connector	Brass	BS 2872 CZ 121
3	Lower body	Brass	BS 2872 CZ 121
4	Nipple	Brass	BS 2872 CZ 121
5	Valve coupling nut	Brass	BS 2872 CZ 121
6	Body gasket	Compressed asbestos fiber	BS 2815 Gr. A
7	Push rod	Brass	BS 2872 CZ 121
8	Plunger	Brass	BS 2872 CZ 121

Dimensions/weights (approximate) in inches (mm) and lbs (kg)

A	B	Weight
4.2 (107)	2.3 (58)	1.6 lb (0.73 kg)



Spacer

When coupled between a 2 port or 3 port valve and the actuator, it enables the system to operate at a higher temperature.

Each Valve has its individual limiting conditions, but when coupled to a Control System, these are governed by the brass actuator which is limited to 450°F (232°C). Installing the spacer between the valve and the control system enables the system to operate at a maximum temperature of 662°F (350°C).

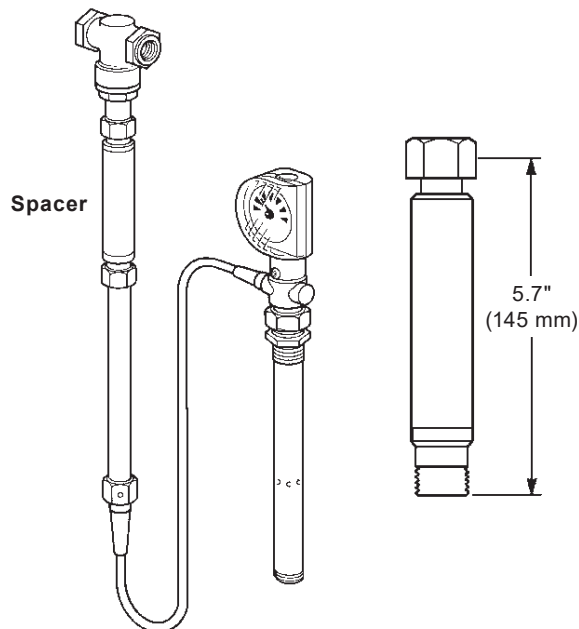
Limiting conditions

Maximum pressure	362 psi	(25 bar)
Maximum temperature	662 °F	(350 °C)

Materials

Part	Material	
Case	Brass	BS 2871 part 2 CZ 162
(1972) Bellows	Stainless Steel	AISI 321

Dimensions



Manual actuator

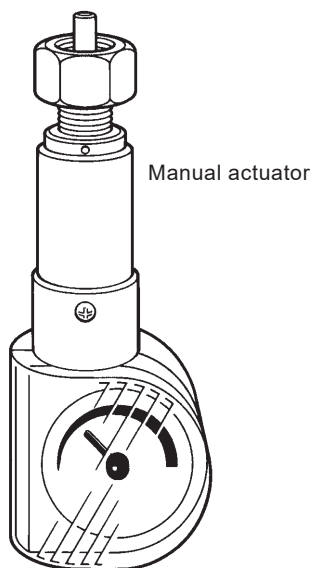
When coupled to a 2 port or a 3 port valve, it enables the valve to be manually operated.

Tamper proof

The Unit is provided with a lockable head to prevent unauthorized tampering with the setting.

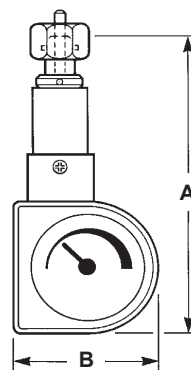
Materials

Brass with plastic adjustment head



Dimensions/weights

(approximate) in inches (mm) and lbs (kg)



A	B	Weight
6.3 (160)	2.2 (55)	0.5 lb (0.2 kg)