

# spirax/sarco

## Steel Pressure Gauge

### Description

Pressure gauge with 4" (100mm) diameter dial with units marked in psi as appropriate. The gauge can be supplied with either:

Ring type syphon tube and cock or a 'U' type syphon tube and cock as an optional accessory.

Bourdon tube gauge, constructed in accordance with DIN 16005.

#### Available pressure range

<b>Range 1</b>	0 - 30 psi	<b>Range 2</b>	0 - 60 psi
<b>Range 3</b>	0 - 100 psi	<b>Range 4</b>	0 - 160 psi
<b>Range 5</b>	0 - 300 psi		

**Note:** Other ranges are available upon request

#### Standards

The product fully complies with the requirements of the Pressure Equipment Directive 97/23/EC.

#### Certification

A certificate of conformity and test report is available as standard for this product. A calibration certificate is available by special order at extra cost. **Note:** All certificate/inspection requirements must be specified at the time of order placement.

### Sizes and pipe connections

<b>Pressure gauge</b>		1/2" NPT
<b>Gauge cock</b>	Gauge end	1/2" NPT
	Syphon end	1/2" NPT
<b>Ring / 'U' syphon</b>	Cock end	1/2" NPT
	Process end	1/2" NPT

### Pressure/temperature limits

Maximum design conditions	Full scale reading
PMA Maximum allowable pressure	Full scale reading
TMA Maximum allowable temperature	423°F

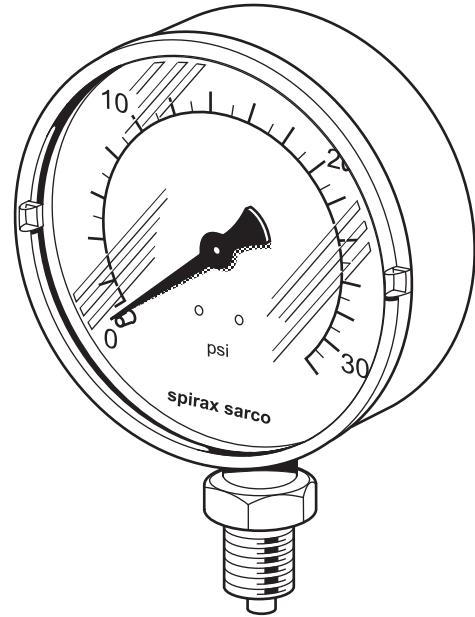
**Note:** Either a 'U' or a ring syphon must be fitted to achieve this.

PMO Maximum operating pressure	Range 1	30 psi
<b>Please note:</b> For compressed air and steam services the maximum operating pressure for this product is 300 psi.	Range 2	60 psi
	Range 3	100 psi
	Range 4	160 psi
	Range 5	300 psi

TMO Maximum operating temperature	140°F
-----------------------------------	-------

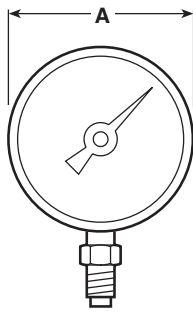
### Materials

Part	Material	
Case	Pressed steel	
Gauge	Glass	Snap fit perspex
	Bourdon tube	CuSh 8 (92% Cu 8% Zn)
Ring and 'U' syphon	Mild steel tube BS 1387 heavy grade	
Gauge cock	Body	Brass
	Handle	Phenolic

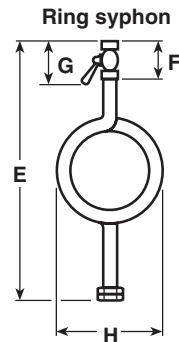
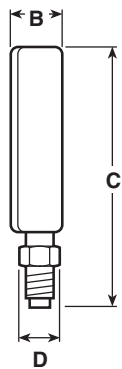


## Dimensions/weights (approximate) in inches and lbs

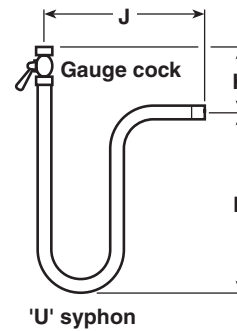
Gauge					Ring syphon						'U' syphon				
A	B	C	D	Weight	E	F	G	H	Weight Syphon	Weight Cock	J	K	L	Weight Syphon	Weight Cock
4	1.1	5.2	0.9 A/F	0.95	15.4	2.3	3.5	4	2.4	0.51	8.5	3.6	6.9	2.0	0.51



Gauge



Ring syphon



'U' syphon

## Safety information, installation and maintenance

For full details see the Installation and Maintenance Instructions (IM-P027-02) supplied with the product.

### Installation note:

As with all instrumentation, the Spirax Sarco pressure gauge is a delicate measuring device and care has to be taken in its installation and use if it is to remain reliable.

It is recommended that all gauges are fitted with a gauge cock to assist when calibration or maintenance is necessary. When used on steam or other hot gases, gauges **must** be protected from heat by the use of a 'U' syphon or ring syphon tube and gauge cock. The syphon pipe should be primed with water prior to fitting the gauge. Care should be taken if the installation is exposed to frost as gauges can burst.

### Disposal:

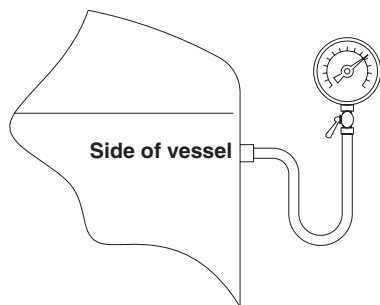
The product is recyclable. No ecological hazard is anticipated with the disposal of this product providing due care is taken.

## Spare parts

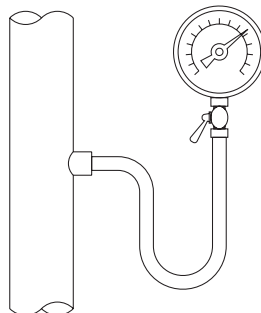
There are no spare parts available for Spirax Sarco pressure gauges.

## Typical uses of a 'U' syphon and gauge

### Vertical pipe

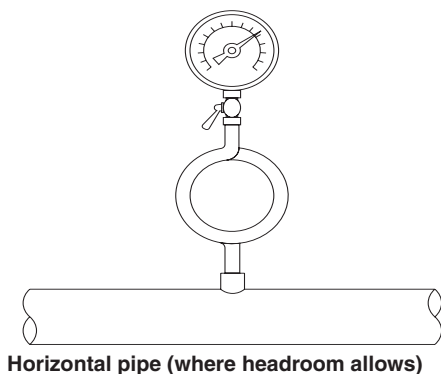


Side of vessel

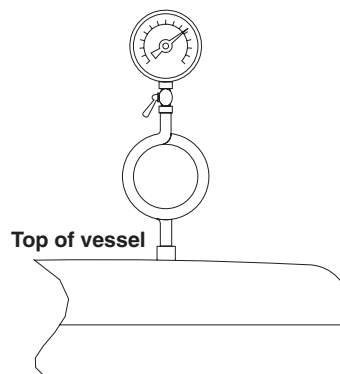


Horizontal pipe  
(where no headroom  
exists)

## Typical uses of a ring syphon and gauge



Horizontal pipe (where headroom allows)



Top of vessel

## Steel Pressure Gauge