



# Steam Filter Stations for Sterilization

## FS-HC Series

### Description

The installation of a filter station going into sterilizers will ensure the quality and purity of steam provided are appropriate for effective sterile processing. Unmonitored steam going into sterilizers can cause suboptimal steam sterilization conditions and lead to wet packs after sterilization, compromising sterility.

- Line size separator & associated trap kit (Mod S1 and S2)
- 3A certified steam filter (Mod CSF16 w/ 5 micron element)
- Pressure gauge assemblies up & downstream of the filter to provide visual indication of when elements need to be cleaned & replaced

### Sizes and pipe connections

NPT: 1", 1½", and 2"

**Note:** Other sizes and connections available on request.

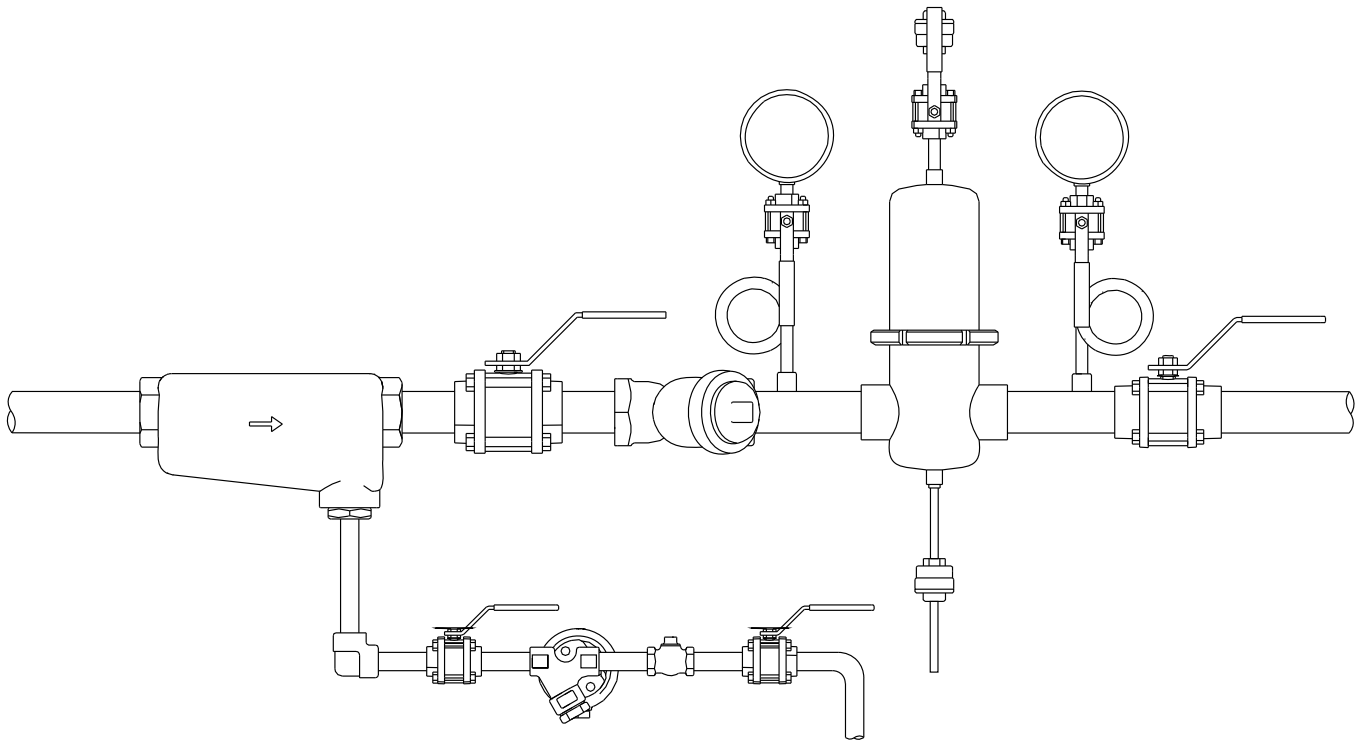
### Standards

The CSF16, when fitted with a 5 micron element are capable of removing 95% of particles 2 microns and larger in size. FS-HC is specifically designed for sterilization, including all necessary components to comply with AAMI ST79 Section 3.3.3 "Steam for Sterile Processing"

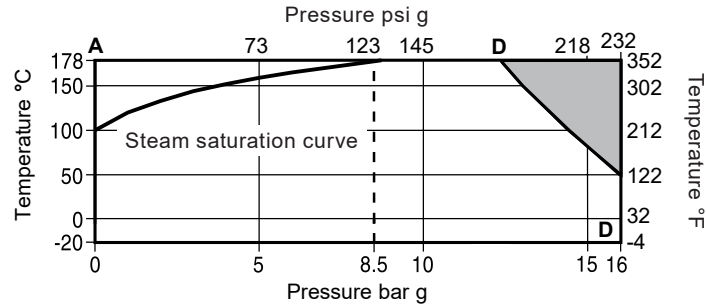
### Certification

These products can be supplied with a modified housing in order to provide certification to EN 10204 3.1.

**Note:** All certification/inspection requirements must be stated at the time of order placement.



## Pressure/temperature limits



The product **must not** be used in this region.

**A-D-D** Screwed NPT.

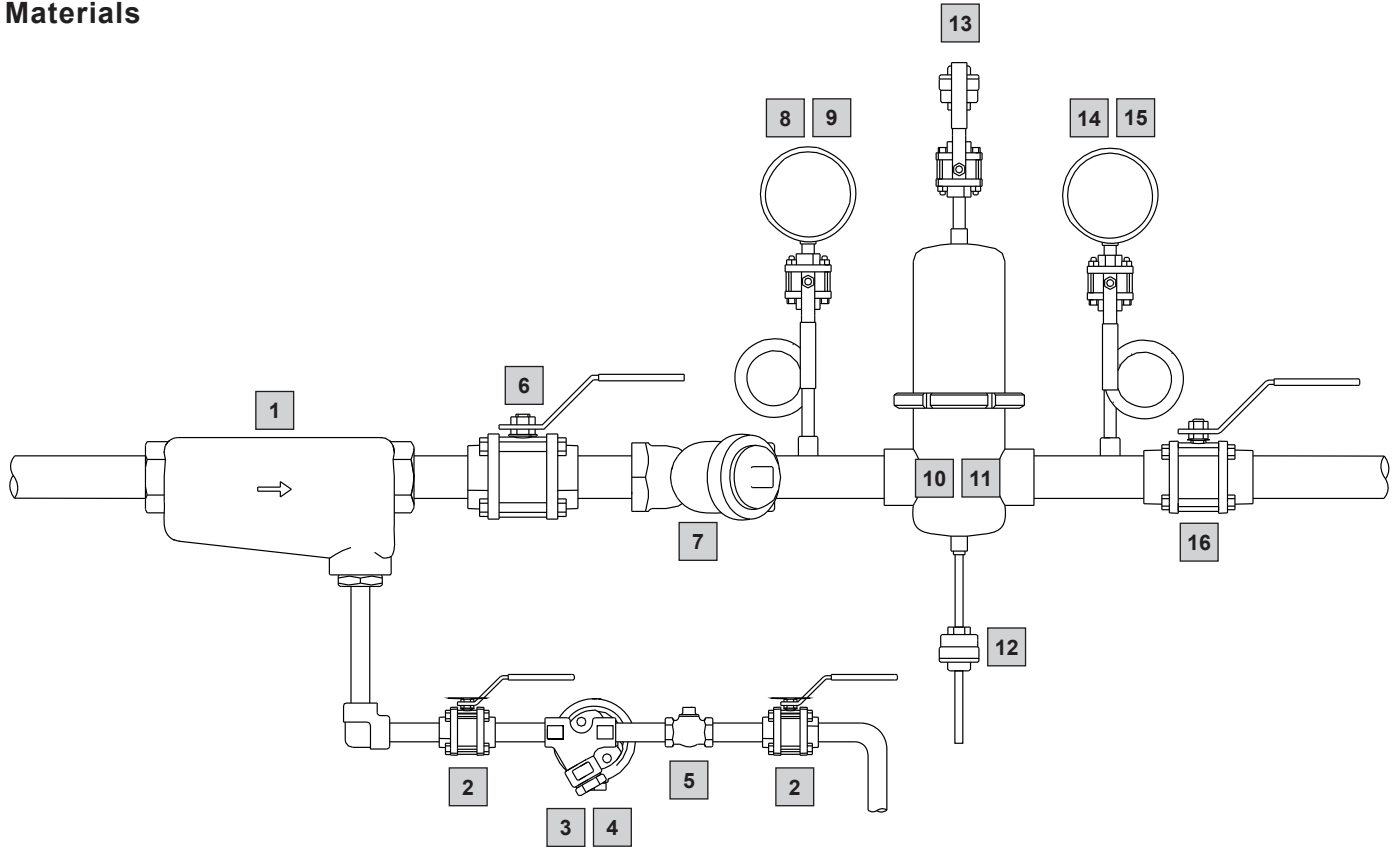
Steam filter station	FS-HC-1	FS-HC-1 1/2	FS-HC-2
Line size	1"	1½"	2"
Steam supply pressure (psi g)	Saturated Steam Capacity (lb/hr)		
10	96	165	370
20	135	233	521
30	175	300	673
40	214	368	824
50	253	435	975
60	293	503	1126
70	332	570	1278
80	371	638	1429
90	410	706	1580
100	450	773	1731
110	489	841	1883
120	528	908	2034

The use of any steam filter without adequate preconditioning of the steam will reduce performance, resulting in frequent element cleanings or replacement, and subsequent high maintenance costs. Spirax Sarco steam filter station kits include a line size separator with an associated strainer and steam trap. These components will remove residual condensate and water droplets carried in suspension within the steam. Installed prior to the CSF16 steam filter, a line size pipeline strainer will remove larger solid particles, thus prolonging periods between filter cleaning. Each steam filter station kit also includes an isolating ball valve and a thermostatic steam trap for the steam filter drain.

The selection table gives a description of the included components. If pressure regulation is required, product information is available upon request.

**Note:** All system components are threaded NPT. The FS-HC can be supplied as individual components or as a fully assembled station. Full technical details for each product contained in a Steam Filter Station Kit are available upon request.

# Materials



No.	Part	1" line size	1½" line size	2" line size
1	Separator	1" S1	1½" S2	2" S2
2	Ball valves		½" M10S2RB (Quantity 2)	
3	Universal connector		½" SS Strainer Connector	
4	Trap		UFT32-4.5	
5	Check valve		½" LCV1	
6	Ball valve	1" M10S2FB	1½" M10S2FB	2" M10S2FB
7	Strainer	1" IT	1½" IT	2" IT
8	Pressure gauge		SS Singlescale PG 0-100 psi g	
9	Pressure gauge syphon		Pigtail black syphon with ¼" M10S4RB	
10	Filter	1" CSF16	1½" CSF16	2" CSF16
11	Filter element	1" 5 Micron Element (Quantity 2)	1½" 5 Micron Element (Quantity 2)	2" 5 Micron Element (Quantity 2)
12	Filter drain trap *		¼" MST21	
13	Filter air vent		¼" MST21 (Inverted) with ¼" M10S4RB	
14	Pressure gauge		SS Singlescale PG 0-100 psi g	
15	Pressure gauge syphon		Stainless steel pigtail syphon with ¼" M10S4RB	
16	Ball valve	1" M10S4FB	1½" M10S4FB	2" M10S4FB

\*Item 12 shipped loose on assembled stations, install on drain line from CSF16 filter a minimum of 3 ft below filter.