



TI-P717-09-US
Issue 1

Spare parts guide

1/2" to 2" and 2 1/2" to 4"

25- and 26-Series main valves

1/2" to 2" 25- and 26-Series main valves

Cap assembly with cap screws and gasket	A, B, C
Diaphragm case bolts and nuts	G, H
Screen, spring support disc, valve spring and cap gasket	M, N, O, C
Cap gasket, valve head, seat and seat gasket (specify regular or reduced port "S" valve)	C, P, Q, R
Valve stem guide and gasket	J, S, T

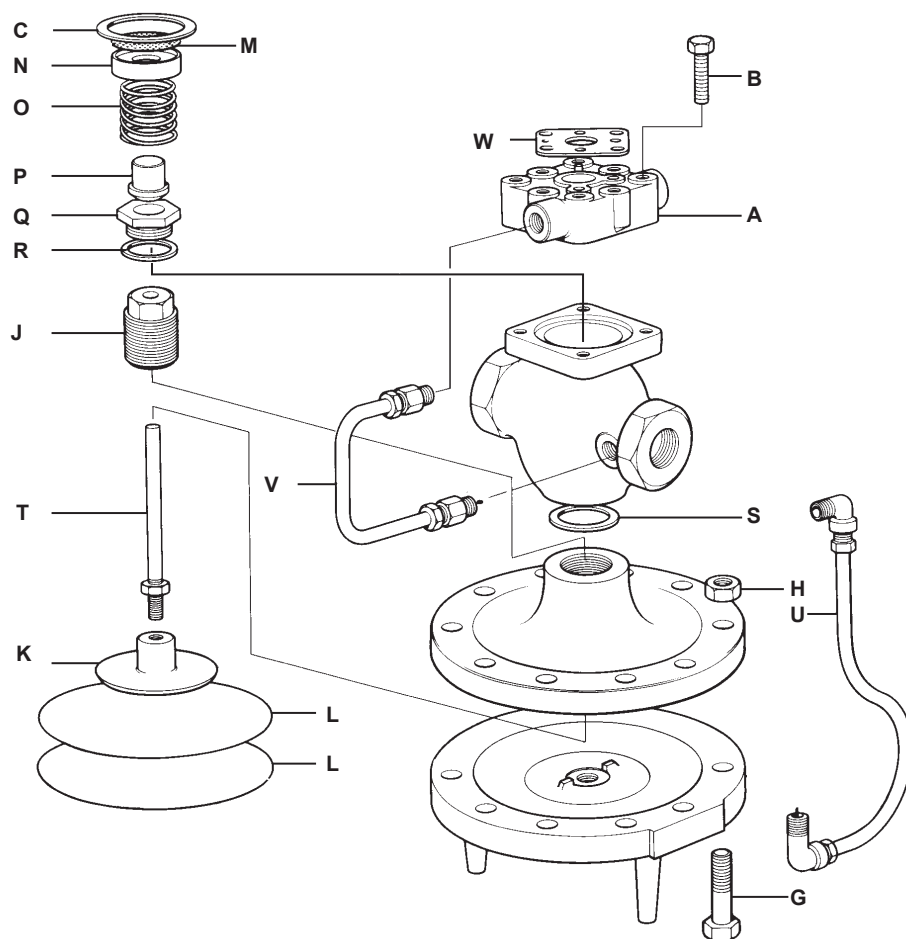
Diaphragm (2 per set)	L
Transmission tubing with fittings	U, V
Gasket kit	C, R, S, W
Diaphragm plate	K
Rebuild kit	B, C, L, M, O, P, Q, R, U, V, W

How to order

Always order spares by using the description given in the column headed Spare Parts, stating the valve size and material.

Example:

1 – Cap assembly for 1/2" Spirax Sarco 25T cast iron temperature regulator.



Maintenance

For complete installation and maintenance instructions, see the IMI sheet, which accompanies the product.

2½" to 4" 25- and 26-Series main valves

Cap assembly with cap screws and gasket	A, B, C
Diaphragm case bolts and nuts	G, H
Screen, retaining ring, main valve spring and cap gasket cap	M, N, O, C
Gasket, valve head and seat (specify regular or reduced port "S" valve)	C, P, Q, X
Lower stem and guide	J, S, T
Diaphragms (2 per set)	L

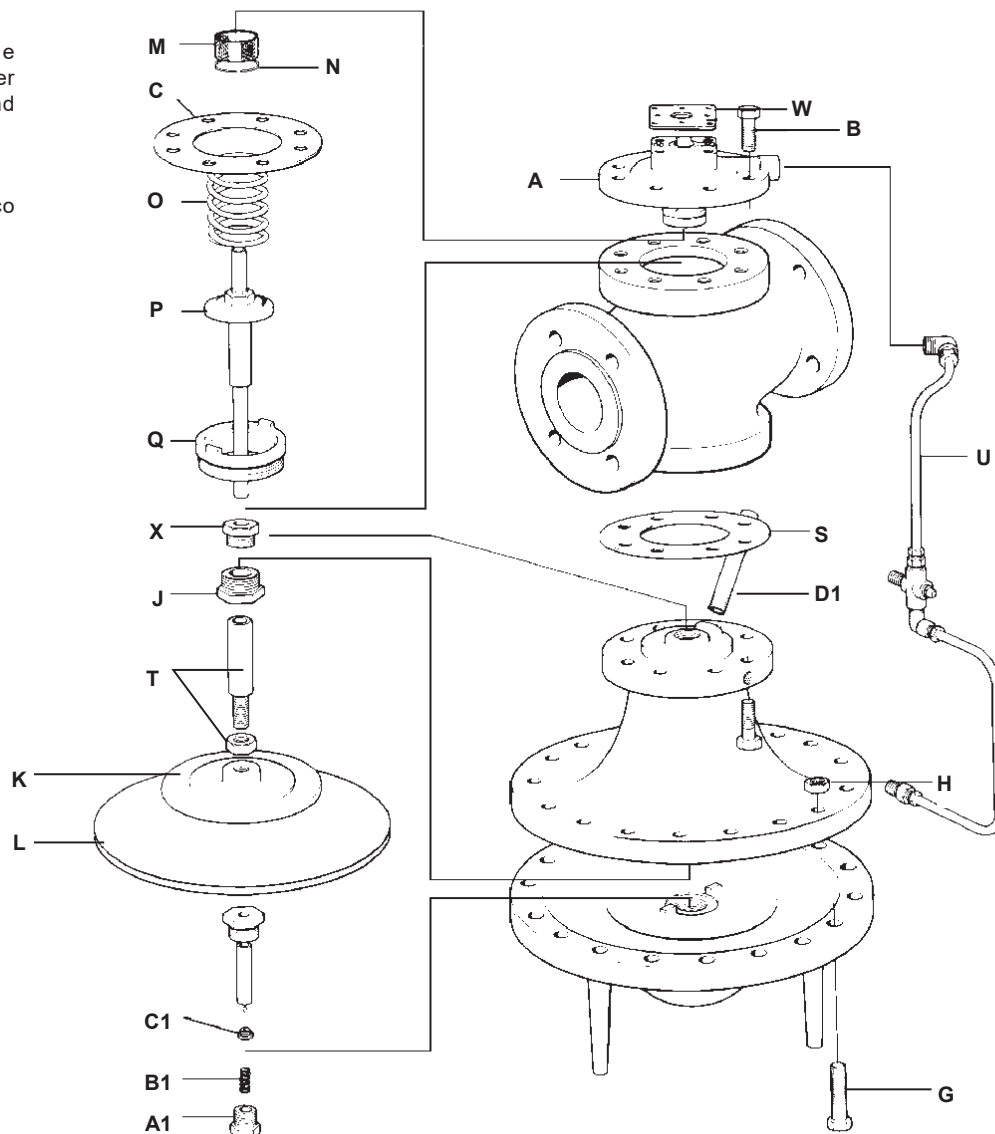
Transmission tubing with assembly	U
Gasket kit	C, S, W
Damping assembly	A1, B1, C1
Diaphragm plate	K
Rebuild kit	B, C, L, M, N, O, P, Q, U, W
Relief tube	D1

How to order

Always order spares by using the description given in the first column under Spare Parts, stating the valve size and material.

Example:

1 – Cap assembly for 2½" Spirax Sarco 25T cast iron temperature regulator



Maintenance

For complete installation and maintenance instructions, see the IMI sheet, which accompanies the product.