



Vented Pressure Powered Pump Packages PPEC/PTC/PTF

The modular pumping system consists of the standard PPEC/PTC/PTF Pressure Powered Pumps, pre-piped with the necessary auxiliary components and integral receiver mounted on a skid base. The unit offers versatility of providing a base mounted module and pump with added modular options for a comprehensive fully engineered modular package ensuring a technically correct and complete hook up.

All packages are designed for service in open loop, vented applications; Care should be taken to ensure adequate venting is available based on the maximum rated flash steam loads per pump package.

Standard Pump Packages

Model		PPEC Simplex Pump Package	PPEC Duplex Pump Package
Limiting conditions	PMA:	See TI-P208-02-US	
	TMA:		
	Receiver Tank:	Non-ASME: Rated for atmospheric pressure only. 650 °F @ 0 psi g (343 °C @ 0 bar g)	Non-ASME: Rated for atmospheric pressure only. 650 °F @ 0 psi g (343 °C @ 0 bar g)
		ASME: Rated for 200 psi g @ 400 °F	ASME: Rated for 200 psi g @ 400 °F
		Sized for flash steam rates of up to 600 lb/hr (272 kg/hr).	Sized for flash steam rates of up to 1200 lb/hr (544 kg/hr).
Sizes	Pump:	1½" x 1½"	1½" x 1½"
	Receiver:	Commercial Grade: 8 Gallons (35 L)	Commercial Grade: 1" PPEC 8 Gallons (35 L) 1½" PPEC 26 Gallons (115 L)
		Industrial Grade: 14 Gallon (62 L) ASME	Industrial Grade: 1½" PPEC 35 Gallon (154 L) ASME
Capacity		See TI-P208-03-US	
Construction		Commercial Grade: Fabricated steel receiver tank and frame Cast iron pump body Stainless steel pump internals Stainless steel check valves	Commercial Grade: Fabricated steel receiver tank and frame Cast iron pump body Stainless steel pump internals Stainless steel check valves
		Industrial Grade: Fabricated steel receiver tank and frame Cast steel pump body Stainless steel pump internals Stainless steel check valves	Industrial Grade: Fabricated steel receiver tank and frame Cast steel pump body Stainless steel pump internals Stainless steel check valves

Standard Pump Packages (continued)

Model		PTC Simplex Pump Package	PTC Duplex Pump Package
Limiting conditions	PMA	See TI-P207-05-US	
	TMA		
	Receiver Tank	Rated for atmospheric pressure only. 650 °F @ 0 psi g (343 °C @ 0 bar g)	Rated for atmospheric pressure only. 650 °F @ 0 psi g (343 °C @ 0 bar g)
		Sized for flash steam rates of up to 1,350 lb/hr (612 kg/hr).	Sized for flash steam rates of up to 2,700 lb/hr (1225 kg/hr).
Sizes	Pump	3" x 2"	3" x 2"
	Receiver	49 Gallons (185 L)	82 Gallons (310 L)
Capacity		See TI-P207-12-US	
Construction		Fabricated steel receiver tank and frame Ductile Iron pump body Stainless steel pump internals Stainless steel check valves	Fabricated steel receiver tank and frame Ductile Iron pump body Stainless steel pump internals Stainless steel check valves

Model		PTC Triplex Pump Package	PTC Quadraplex Pump Package
Limiting conditions	PMA	See TI-P207-05-US	
	TMA		
	Receiver Tank	Rated for atmospheric pressure only. 650 °F @ 0 psi g (343 °C @ 0 bar g)	Rated for atmospheric pressure only. 650 °F @ 0 psi g (343 °C @ 0 bar g)
		Sized for flash steam rates of up to 4,000 lb/hr (1814 kg/hr)	Sized for flash steam rates of up to 4,500 lb/hr (2041 kg/hr)
Sizes	Pump	3" x 2"	3" x 2"
	Receiver	158 Gallons (598 L)	207 Gallons (784 L)
Capacity		See TI-P207-12-US	
Construction		Fabricated Steel Receiver, Tank, and Frame Ductile Iron pump body Stainless Steel Pump Internals Stainless Steel check valves	Fabricated Steel Receiver, Tank, and Frame Ductile Iron pump body Stainless Steel Pump Internals Stainless Steel check valves

Model		PTF Simplex Pump Package	PTF Duplex Pump Package
Limiting conditions	PMA	See TI-P207-06-US	
	TMA		
	Receiver Tank	Rated for 200 psi g @ 395 °F (13.8 bar g @ 202 °C)	Rated for 200 psi g @ 395 °F (13.8 bar g @ 202 °C)
		Sized for flash steam rates of up to 1,350 lb/hr.(612 kg/hr)	Sized for flash steam rates of up to 2,700 lb/hr (1225 kg/hr)
Sizes	Pump	3" x 2"	3" x 2"
	Receiver	49 Gallons (185 L)	82 Gallons (310 L)
Capacity		See TI-P207-12-US	
Construction		Fabricated steel receiver tank and frame Fabricated pump body, ASME coded Stainless steel pump internals Stainless steel check valves	Fabricated steel receiver tank and frame Fabricated pump body, ASME coded Stainless steel pump internals Stainless steel check valves

Standard Pump Packages (continued)

Model		PTF Triplex Pump Package	PTF Quadraplex Pump Package
Limiting conditions	PMA	See TI-P207-06-US	
	TMA		
	Receiver Tank	Rated for 200 psi g @ 395 °F (13.8 bar g @ 202 °C)	Rated for 200 psi g @ 395 °F (13.8 bar g @ 202 °C)
		Sized for flash steam rates of up to 4,000 lb/hr (1814 kg/hr)	Sized for flash steam rates of up to 4,500 lb/hr (2041 kg/hr)
Sizes	Pump	3" x 2"	3" x 2"
	Receiver	158 Gallons (598 L)	207 Gallons (784 L)
Capacity		See TI-P207-12-US	
Construction		Fabricated Steel Receiver, Tank, and Frame Fabricated Pump Body, ASME Coded Stainless Steel Pump Internals Stainless Steel check valves	Fabricated Steel Receiver, Tank, and Frame Fabricated Pump Body, ASME Coded Stainless Steel Pump Internals Stainless Steel check valves

Standard Pump Package Options

Standard Pump Package Includes ¹:

- Motive and exhaust piping with motive drip trap
- Inlet Isolation Valve(s)
- Inlet Strainer(s)
- Pump Gauge Glass Assembly(s)

¹: For a complete list of the bill of materials, please consult the pump package sales drawing.

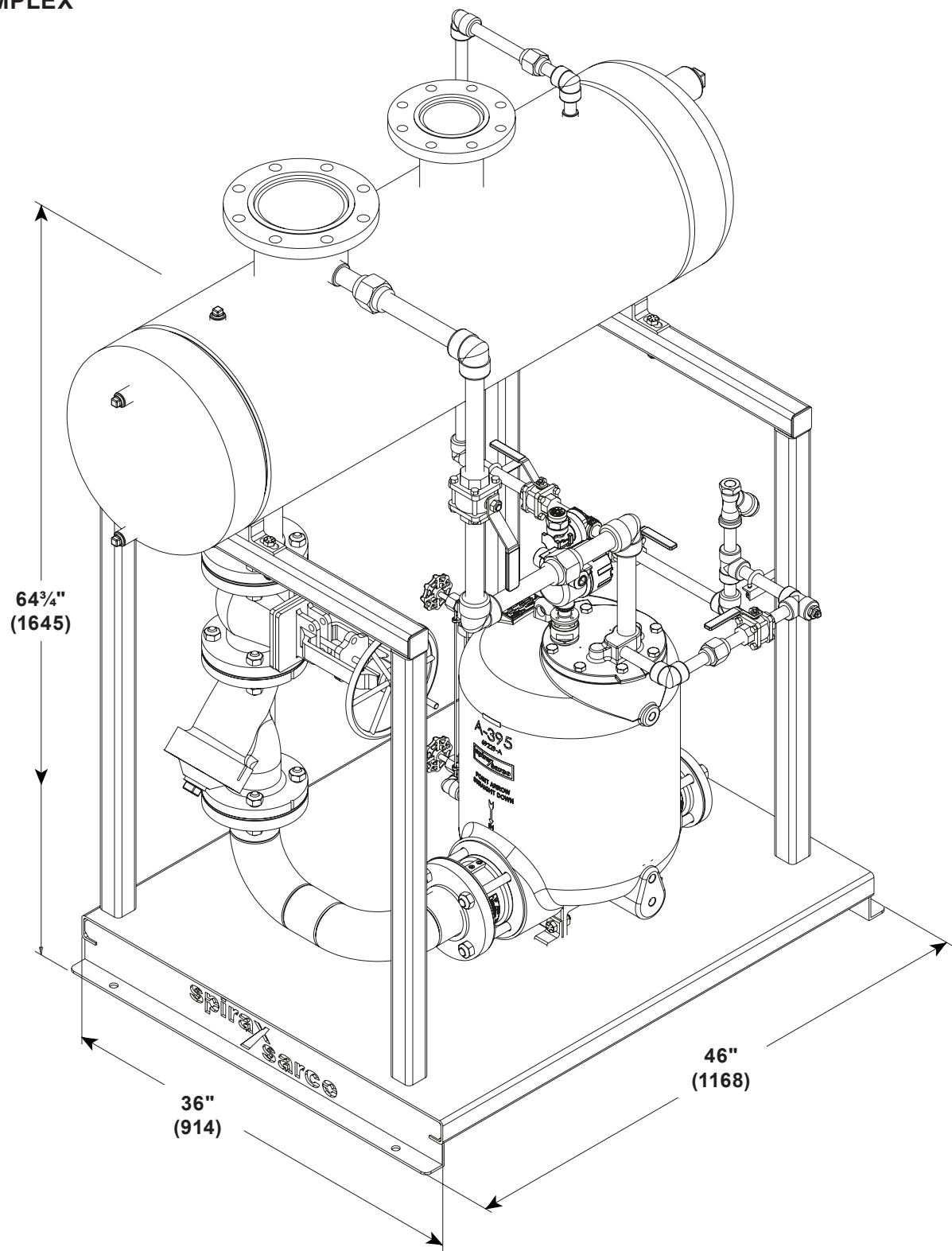
Additional Options Include:

- Pump Insulation Blanket(s)
- Receiver Insulation Blanket
- Receiver Gauge Glass ¹
- Overflow Piping ¹
- Pump Discharge Gate Valve(s)
- Pump Drain Valve(s)
- Discharge Manifold ²

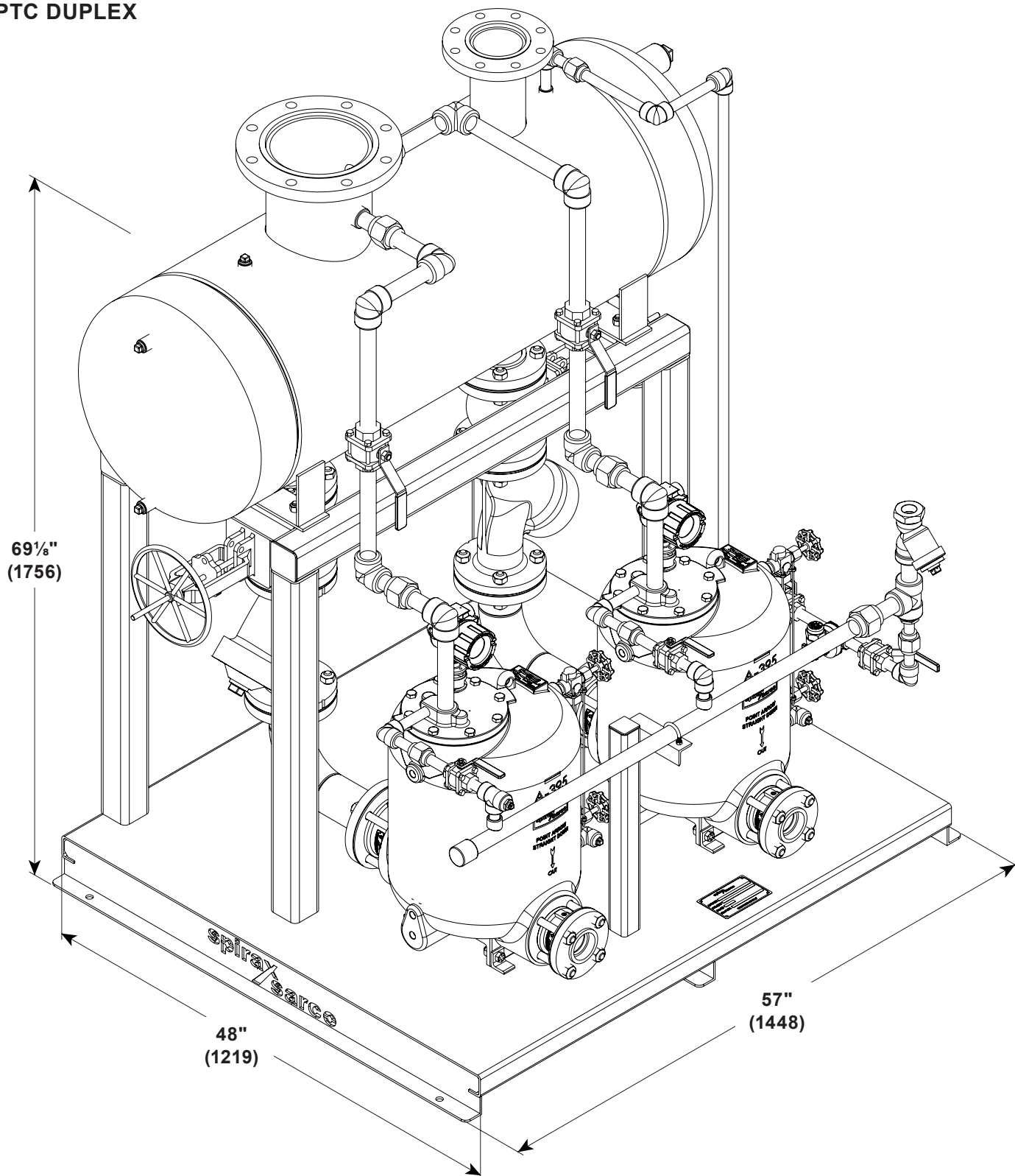
¹: Item ships loose with package

²: Not available with Simplex; Does not include discharge gate valves

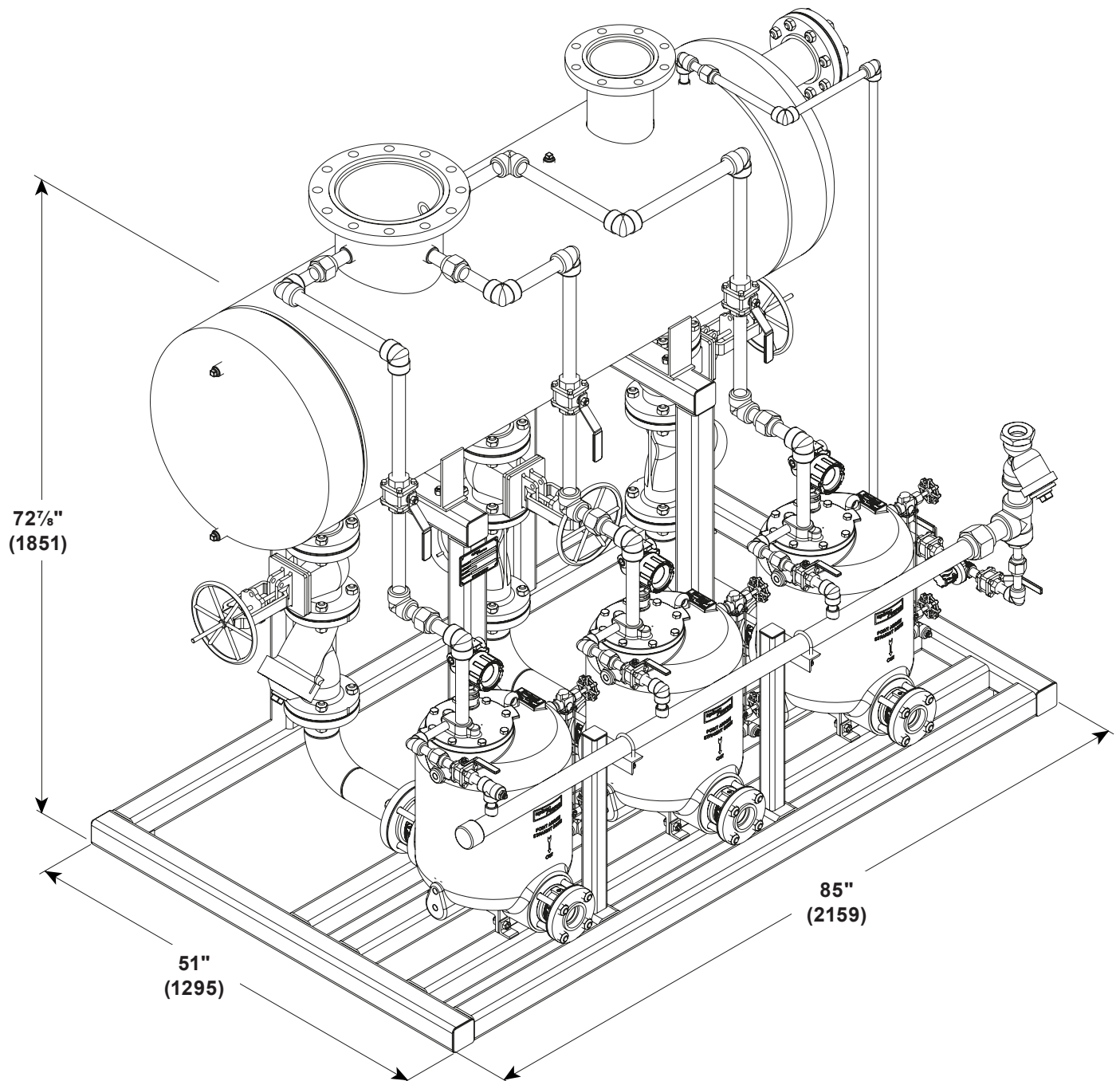
PTC SIMPLEX



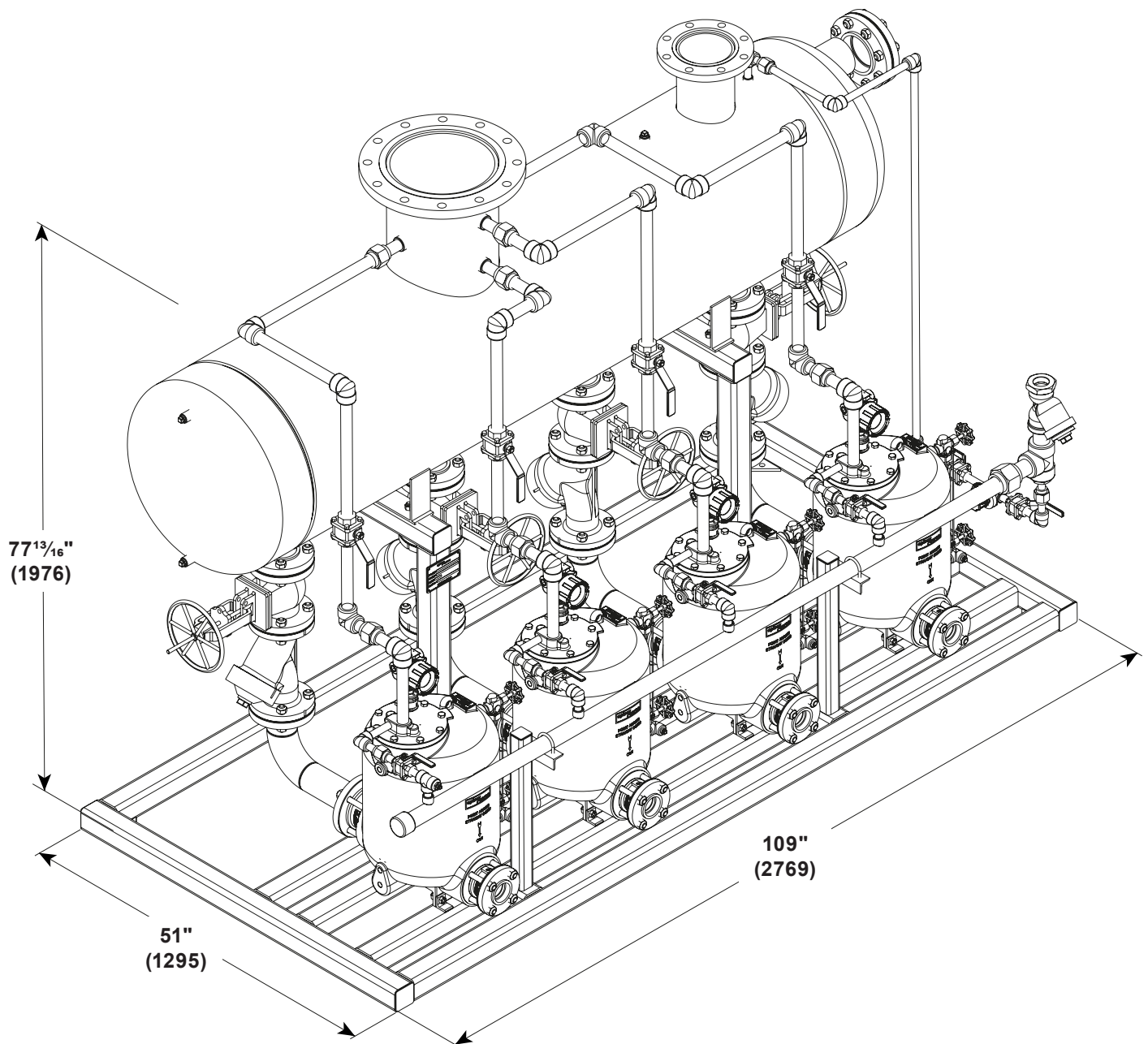
PTC DUPLEX



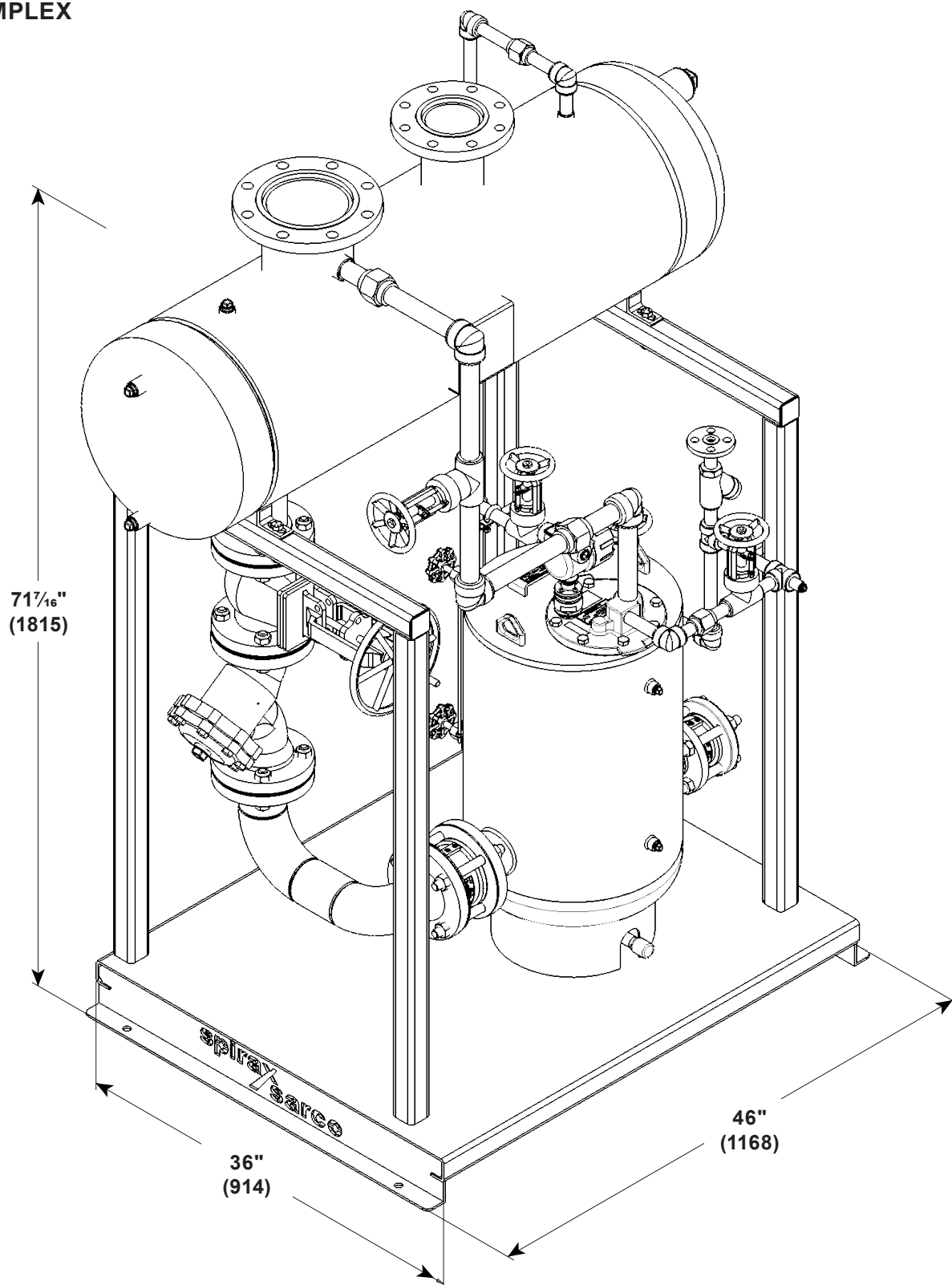
PTC TRIPLEX



PTC QUADRAPLEX

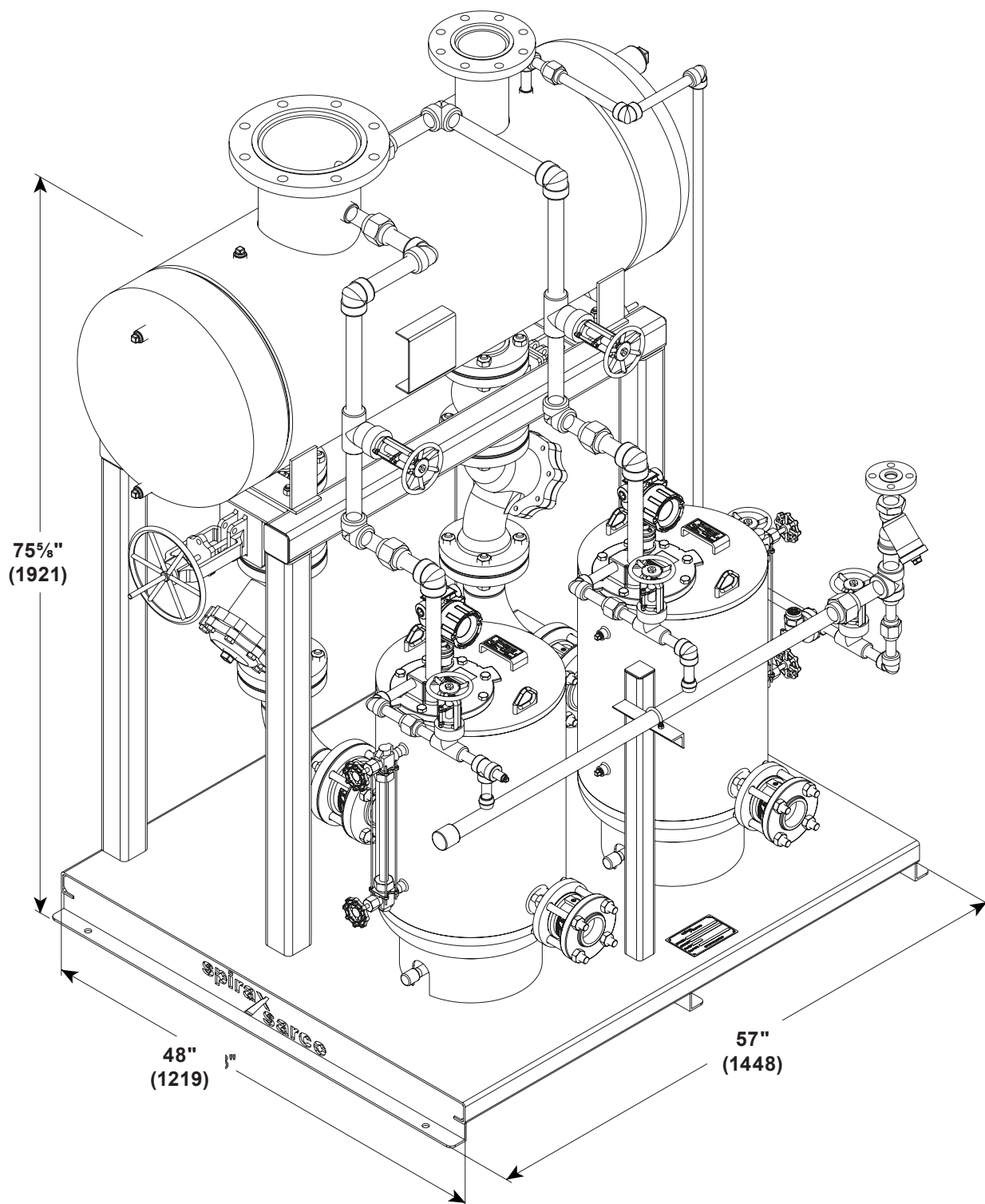


PTF SIMPLEX

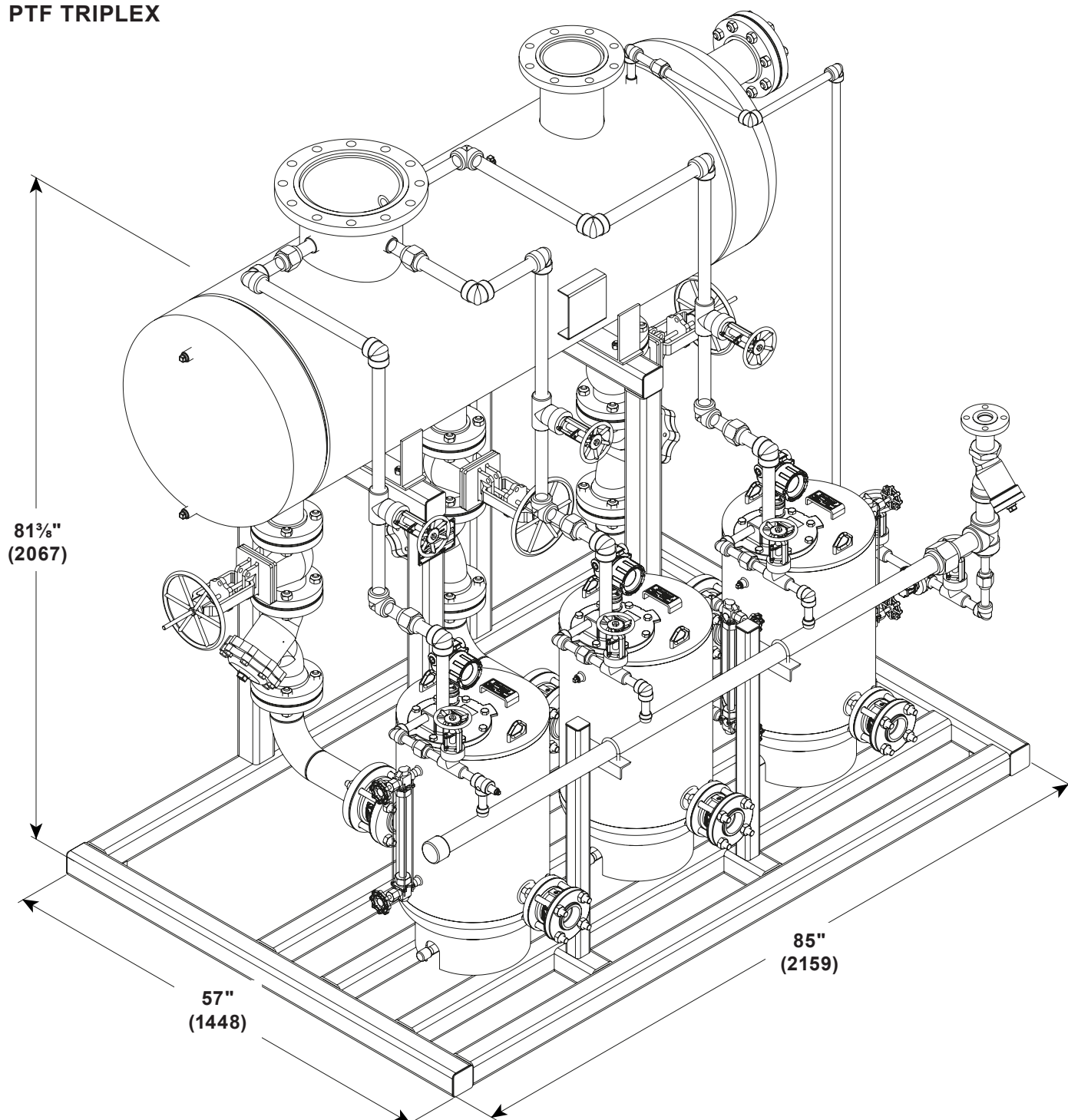


Dimensions (continued) (approximate in inches(mm))

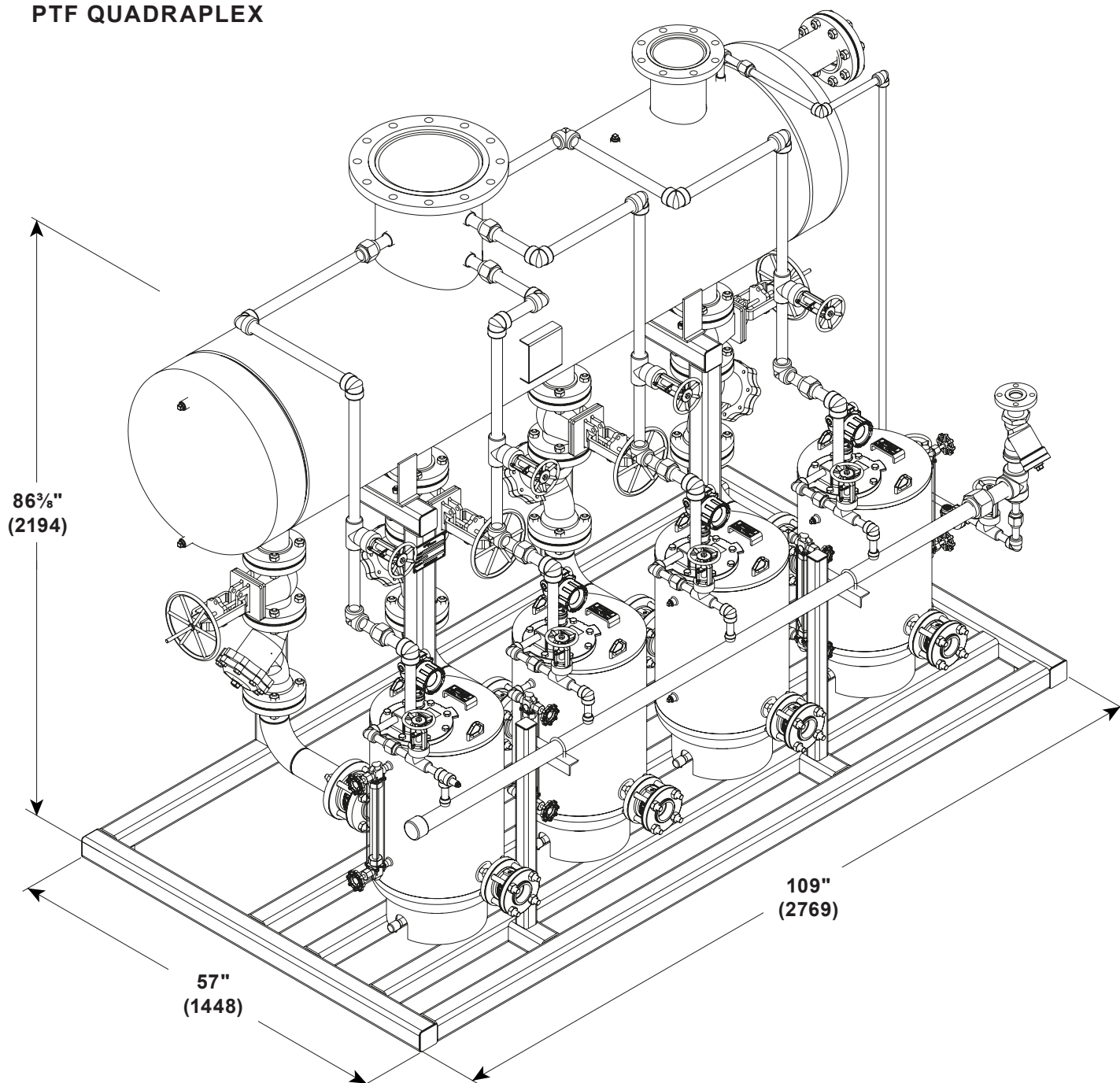
PTF DUPLEX



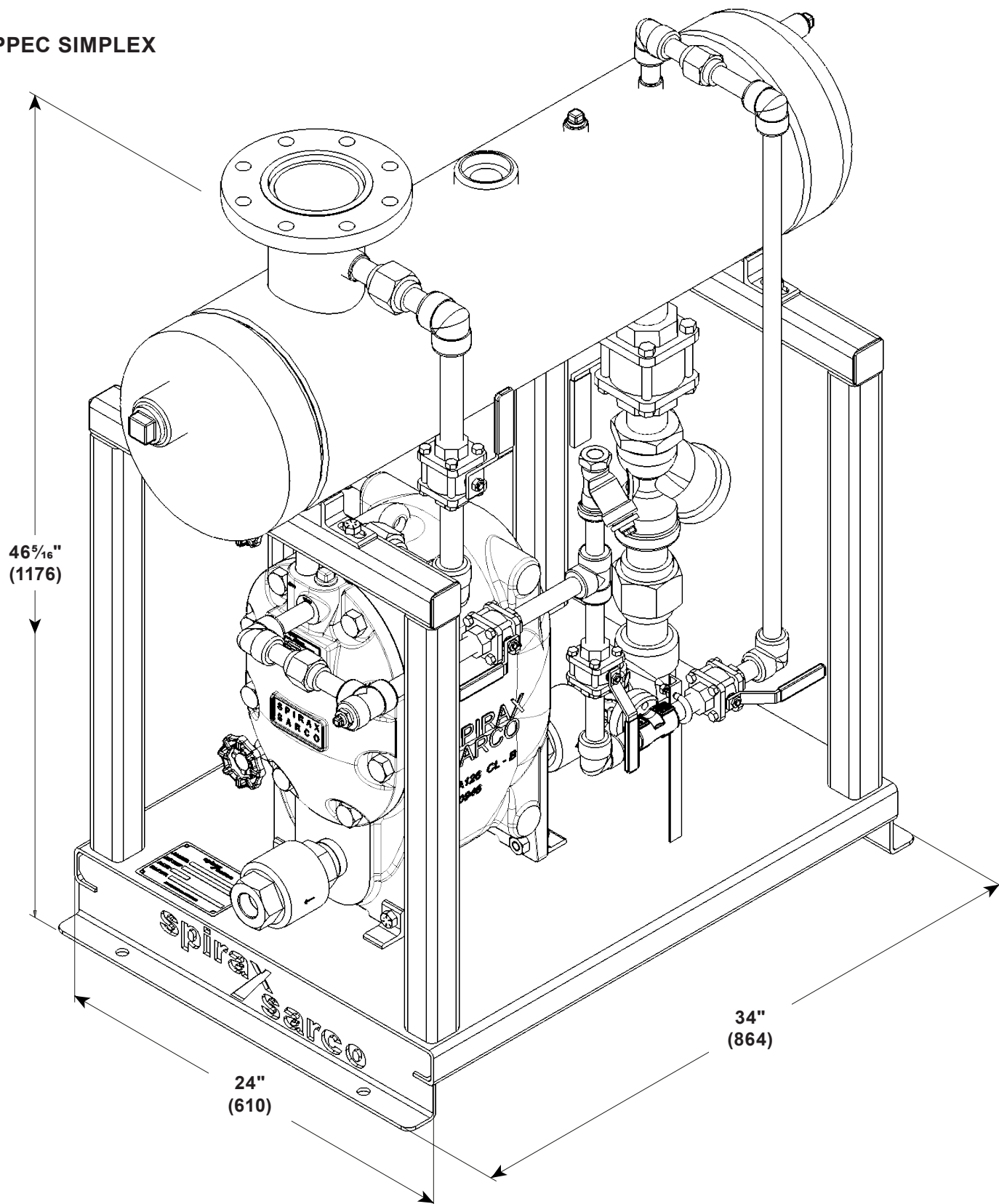
PTF TRIPLEX



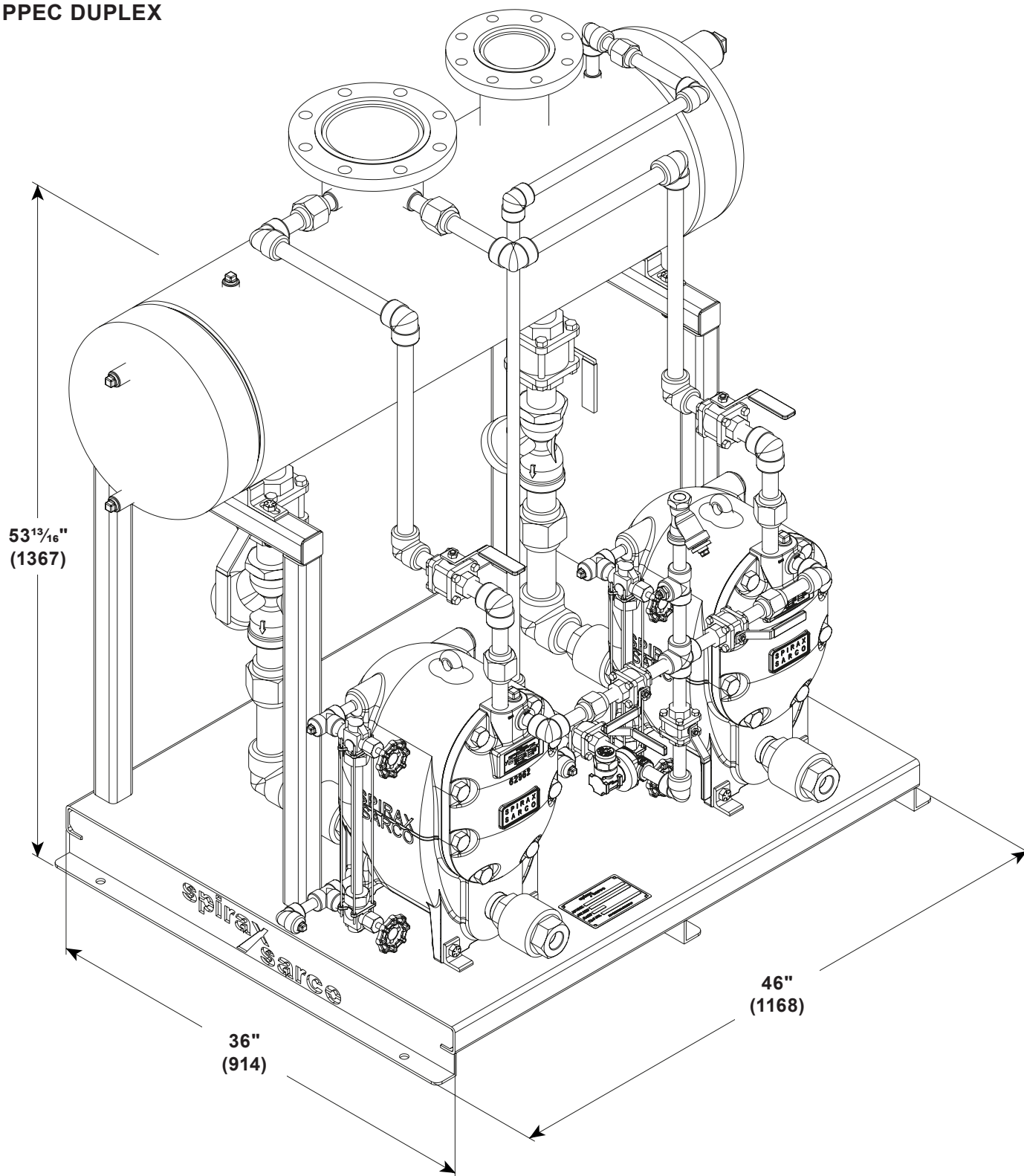
PTF QUADRAPLEX



PPEC SIMPLEX

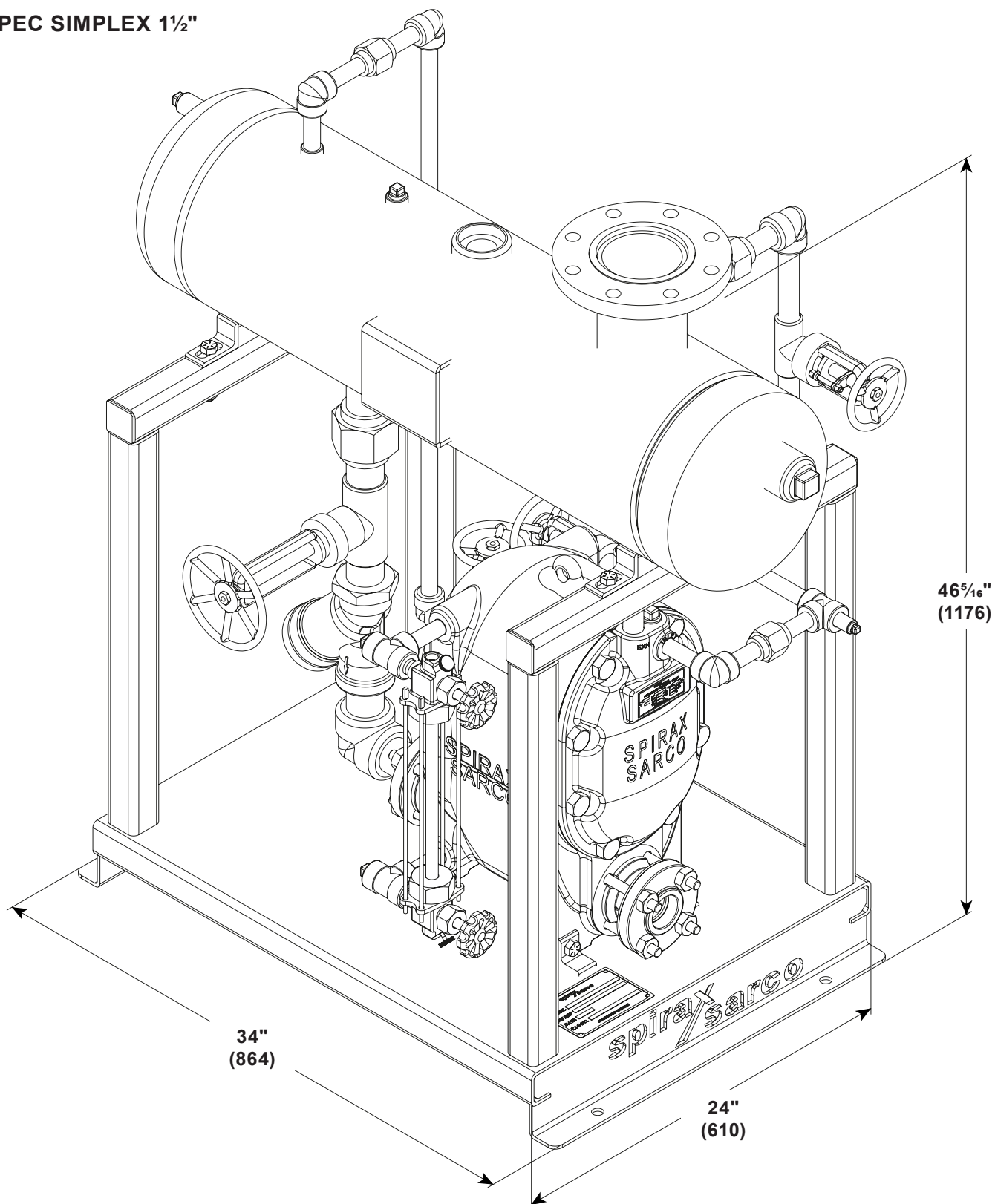


PPEC DUPLEX



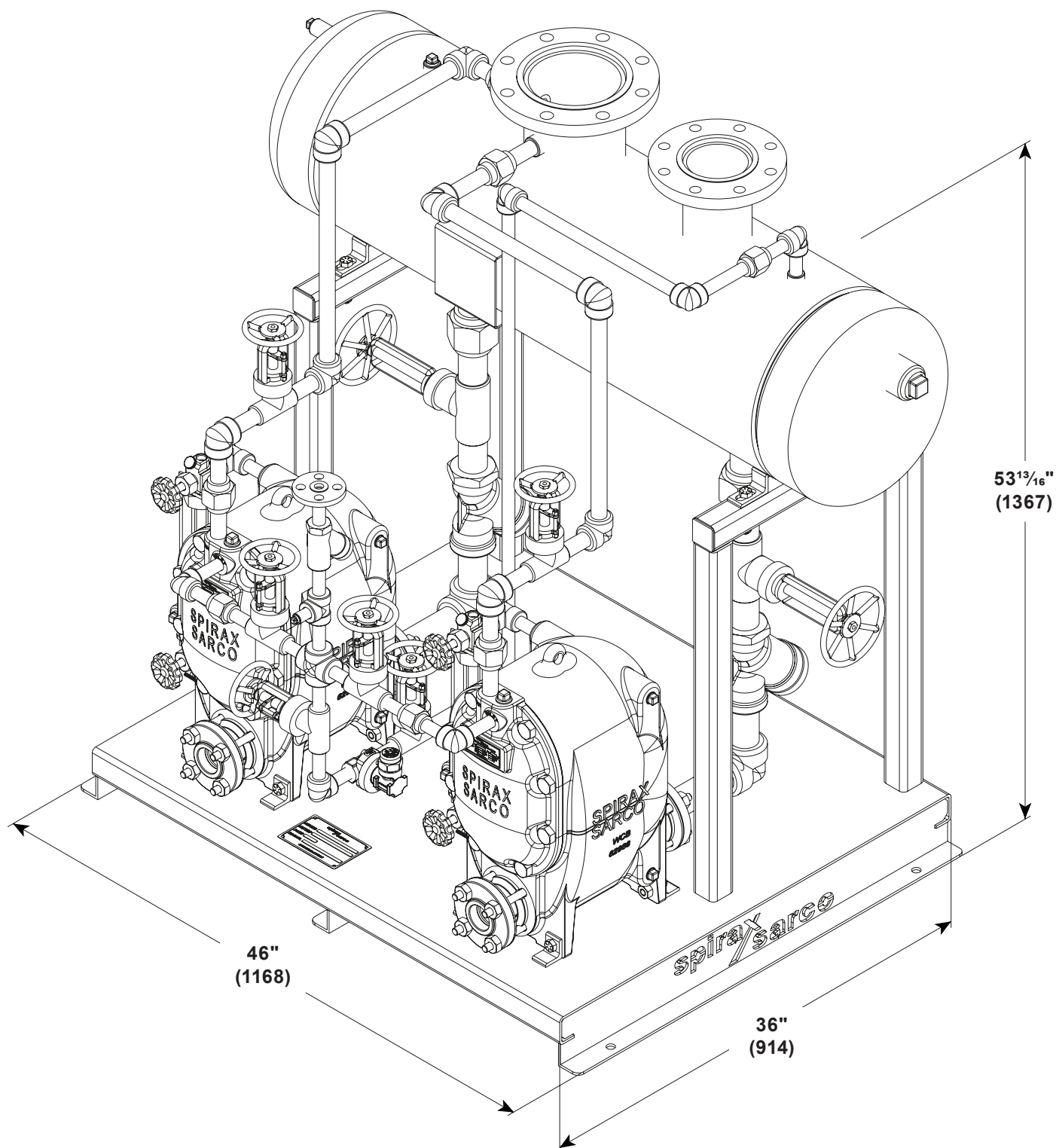
Dimensions (continued) (approximate in inches(mm))

PPEC SIMPLEX 1½"



Dimensions (continued) (approximate in inches(mm))

PPEC DUPLEX 1½"



Vented Pressure Powered Pump Packages - PPEC/PTC/PTF

Standard Pump Package Series Selection Guide:

Pump	Part Number	Description		
Series	PPEC	ES001618	Simplex Industrial PPEC Package	ES003140
		ES001619	Duplex Industrial PPEC Package	
		ES003120	Simplex Commercial PPEC Package	
		ES003220	Duplex Commercial PPEC Package	
	PTC	ES003140	Simplex PTC Package	
		ES003240	Duplex PTC Package	
		ES003340	Triplex PTC Package	
		ES003440	Quadraplex PTC Package	
	PTF	ES003160	Simplex PTF Package	
		ES003260	Duplex PTF Package	
		ES003360	Triplex PTF Package	
		ES003460	Quadraplex PTF Package	
Options	All	A	Pump Insulation Blanket ¹	-ABE
		B	Receiver Insulation Blanket	
		C	Receiver Gauge Glass ²	
		D	Overflow Piping ²	
		E	Pump Discharge Gate Valve ¹	
		F	Pump Drain Valve ¹	
		G	Discharge Manifold ³	
				ES003140-ABE

¹ Options A, E, and F will include QTY (1) per pump on standard skid package

² Options C and D will ship loose for field installation by customer

³ Option G is not available with one pump (Simplex) designs

How to order/selection example:

1 off Simplex PTC package with Pump Insulation Blanket, Receiver Insulation Blanket, and Pump Discharge Gate Valves