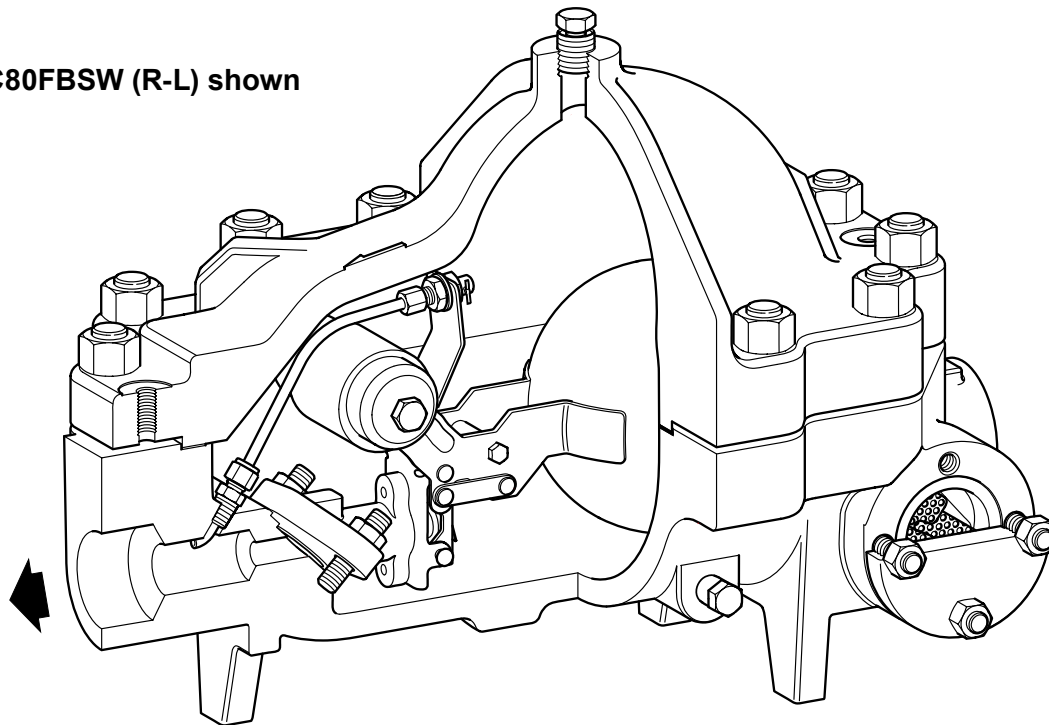


spirax sarco

FTC80FB Cast Steel 1½" and 2" Ball Float Steam Trap

2" FTC80FBSW (R-L) shown



Description

As standard, the FTC80FB ball float steam trap is supplied with a right to left (R-L) flow configuration having horizontal connections and has provision for adding an air venting option; Please note that the unit is supplied with a ¼" socket weld connection in the cover with a plug screwed into the fitting. It has been designed for floor mounting and is suitable for most high-pressure process and drainage applications. Its simple robust ball float mechanism ensures excellent resistance to waterhammer. All internals are easily accessible for in-line maintenance and a drain port allows full body drainage. It has a large maintainable strainer screen that extends service intervals and is located in an accessible flanged chamber.

Factory fitted internal fixed bleed for continuous discharge of air and other incondensable gasses

Note: As standard the unit is supplied with a ¼" socket weld connection in the cover with a ⅝" BSP screwed plug fitted.

Standard

This product fully complies with the requirements of the European Pressure Equipment Directive 97/23/EC.

Certification

This product is available with certification to EN 10204 3.1 for the body, cover, fasteners, and screen flange.

Note: All certification / inspection requirements must be stated at the time of order placement.

Sizes and pipe connections

1½" and 2" ASME (ANSI) B 16.11 Class 6000 socket weld.

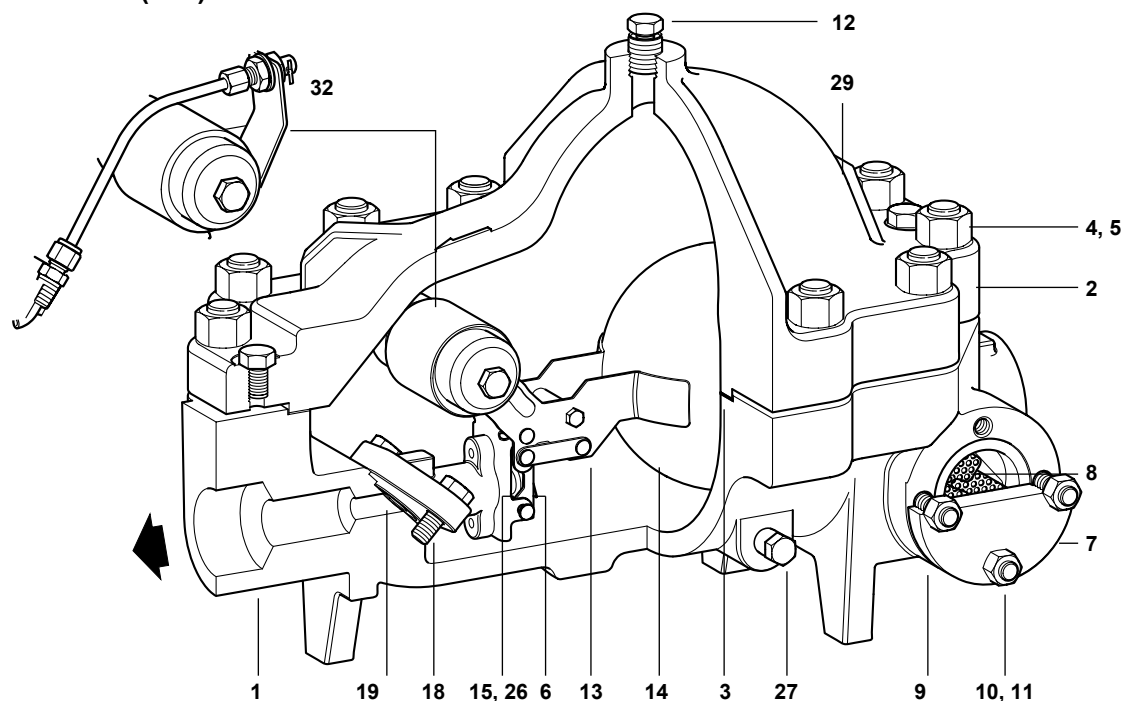
1½" and 2" ASME (ANSI) B 16.5 Class 600 flanges.

Note: Other connections are available upon request but may limit the operating range – Please consult Spirax Sarco for further information.

Drain plug connection is ⅜" screwed NPT as standard.

FTC80FB Cast Steel 1½" and 2" Ball Float Steam Trap

2" FTC80 SW (R-L) shown



Materials

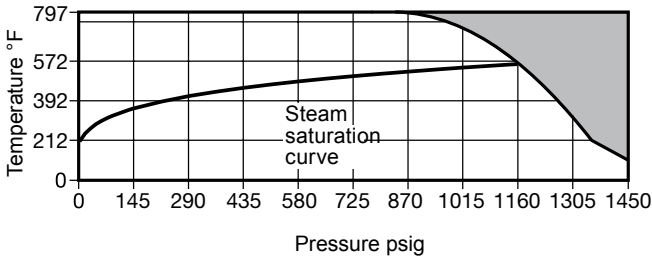
No.	Part	Material	
1	Body	Cast steel	ASTM A216 WCB
2	Cover	Cast steel	ASTM A216 WCB
3	Cover gasket	Tanged graphite	
4	Cover stud	Steel	ASTM A193 B16
5	Cover nuts	Steel	ASTM A194 Gr. 4
6	Valve head and retainer	Stainless steel	
7	Strainer flange	Steel	ASTMA182F11CL2
8	Strainer screen	Stainless steel	
9	Strainer gasket	Tanged graphite	
10	Strainer studs	Steel	ASTM A193 B16
11	Strainer nuts	Steel	ASTM A194 Gr. 4
12	Plug	Steel	ASTMA182F11CL2
13	Mechanism assembly	Stainless steel	
14	Float	Stainless steel	
15	Valve seat	Titanium	
18a	Assembly bolts	Stainless steel	A4-80
18b			
19	Assembly gasket	Reinforced exfoliated graphite	
26	Gasket	Stainless steel	
27	Drain plug 3/8" NPT	Steel	ASTM A182 F11 CL2
29	Name-plate	Stainless steel	
*30	Flange pipe	Steel	ASTM A335 P11
*31	Flange	Steel	ASTM A182 F11 CL2
32	Fixed bleed assembly is made up of Bleed orifice, Pipe support, Washer, Lock-nut, Nut, Ferrule, Bleed pipe, Stud, and Twin ferrule (stainless steel)		

Note: Items 30 and 31 the flange and flange pipe are not shown. (Flanged Traps)

TI-P179-02-US 7.18

FTC80FB Cast Steel 1½" and 2" Ball Float Steam Trap

Pressure/temperature limits



The product **must not** be used in this region.

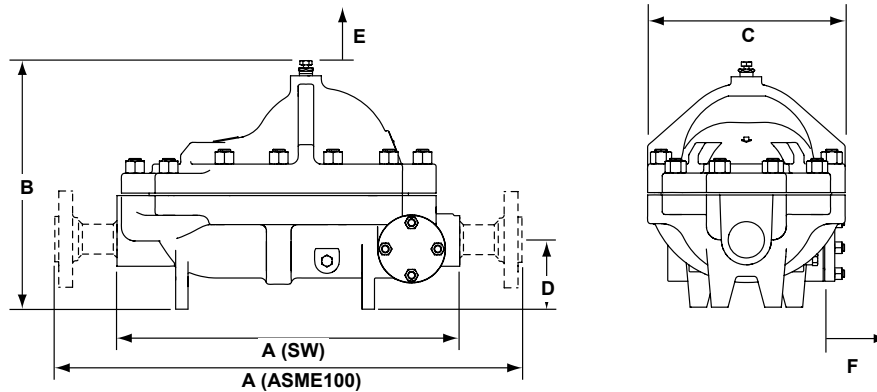
Body design conditions	ASME (ANSI) 600
PMA Maximum allowable pressure	1450 psig @ 125°F
TMA Maximum allowable temperature	797°F @ 827psig
Minimum allowable temperature	-20°F
PMO Maximum operating pressure for saturated steam service	1160 psig
TMO Maximum operating temperature	797°F @ 827psig
Minimum operating temperature	32°F
ΔPMX Maximum differential pressure	FTC80-45 652 psig
	FTC80-62 899 psig
	FTC80-80 1160 psig

Designed for a maximum cold hydraulic test pressure of 2175 psig

Steam Pressure (psig)	Condensate Flow lb/hr		
	FTC80-45	FTC80-62	FTC80-80
50	4330	2761	1925
100	5889	3782	2614
200	8010	5180	3548
300	9589	6227	4243
400	10895	7096	4817
500	12029	7853	5315
600	13043	8530	5761
650	13515	8844	6165
700		9149	6166
800		9721	6540
900		10255	6889
1000			7216
1100			7526
1160			7705

Dimensions/weights (approximate) in inches and (mm)

Size	A		B	C	D	Withdrawal distance		Weight	
	Socket weld	Flanged ASME 600	Plug			E Cover	F Screen	Socket weld	Flanged ASME 600
DN40 (1½")	21.8 (555)	29.7 (755)	15.4 (390)	12.8 (324)	4.4 (110.5)	2.2 (55)	10.2 (260)	247 (112)	260 (118)
DN50 (2")	21.8 (555)	30.9 (785)	15.4 (390)	12.8 (324)	4.4 (110.5)	2.2 (55)	10.2 (260)	247 (112)	260 (118)



Safety information, installation and maintenance

For full details see the Installation and Maintenance Instructions (IM-P179-06) supplied with the product.

Installation note:

The FTC80FB must be installed with the direction of flow as indicated on the body, and with the float arm in a horizontal plain so that it rises and falls vertically. Integral legs assist stable floor mounting. Please note that appropriate high temperature jointing compound must be used on the drain plug and air vent plug threads.

Disposal

This product is recyclable. No ecological hazard is anticipated with the disposal of this product providing due care is taken.

How to order

Example: 1 off Spirax Sarco 1½" FTC80FB-45 (R-L) ball float steam trap with ASME Class 6000 weld connections complete with 3.1 certification for the FTC80FB.

TI-P179-02-US 7.18

FTC80FB Cast Steel 1½" and 2" Ball Float Steam Trap

Spare parts

The spare parts available are shown in heavy outline. Parts drawn in broken line are not supplied as spares.

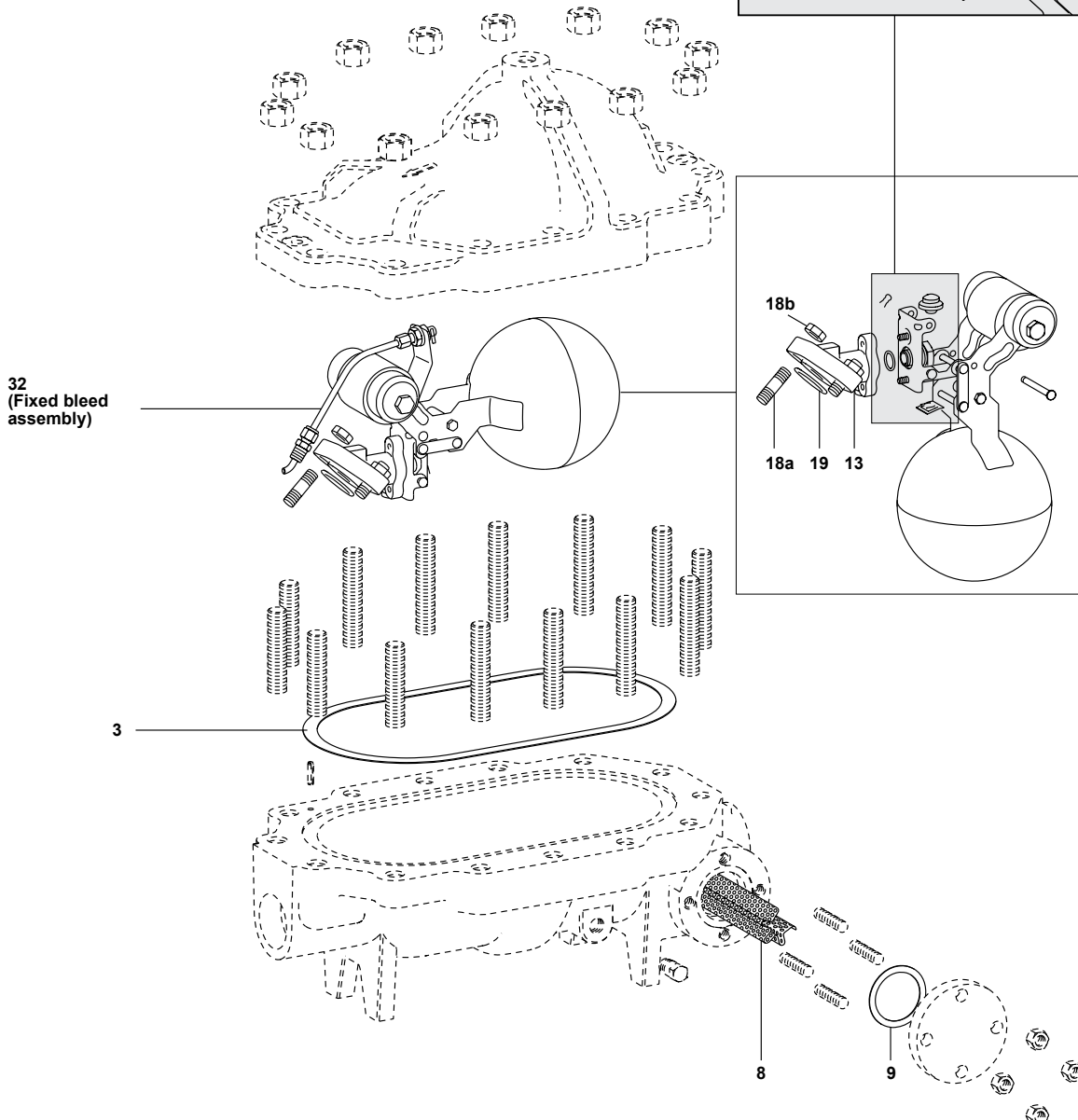
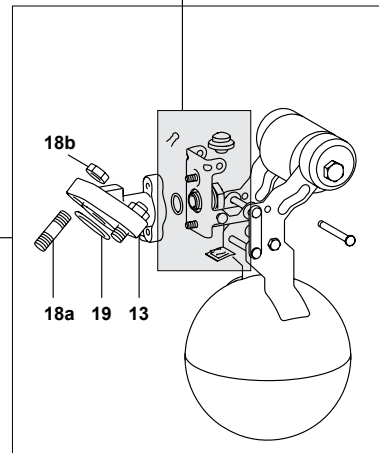
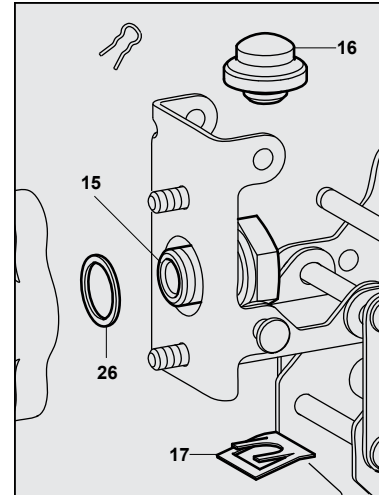
Available spares

Mechanism and fixed bleed maintenance kit including float	3, 13, 18a, 18b, 19, 32
Seat and ball head	3, 15, 16, 17, 19, 26
Cover gasket (3 off)	3
Strainer screen	8, 9
Strainer gasket (3 off)	9

How to order spares

Always order spares by using the description given in the column headed 'Available spares' and state the size and type of trap, including pressure range.

Example: 1 off Seat and ball head set for a Spirax Sarco 1½" FTC80FB-45 ball float steam trap.



32
(Fixed bleed
assembly)