



# DAB Series Steam Desuperheater

## Description

Spirax Sarco by Hiter DAB Series is a Steam Desuperheater with multiple nozzles designed to work with large spray water flows. The DAB desuperheater, with the atomizing nozzles connected, is part of the steam line.

## Technical Specifications

<b>Pipe Diameters</b>	24 up to 60in. Other sizes available upon request, contact SPIRAX SARCO HITER.
<b>Classes</b>	ASME 150, 300, 600, 900, 1500 or 2500.
<b>Nozzle Body Material</b>	ASTM A216 Gr. WCB carbon steel, ASTM A351 Gr. CF8M stainless steel or ASTM A217 Gr. WC9 Cr-Mo Alloy Steel. Other materials are available on request.
<b>Nozzle Trim Materials</b>	420 stainless steel plug and Inconel spring.
<b>Water Pipe Material</b>	Carbon steel, Cr-Mo Alloy Steel or Stainless Steel
<b>Steam Pipe Material</b>	Carbon steel, Cr-Mo Alloy Steel or Stainless Steel.



## Flow Coefficient - $C_v$

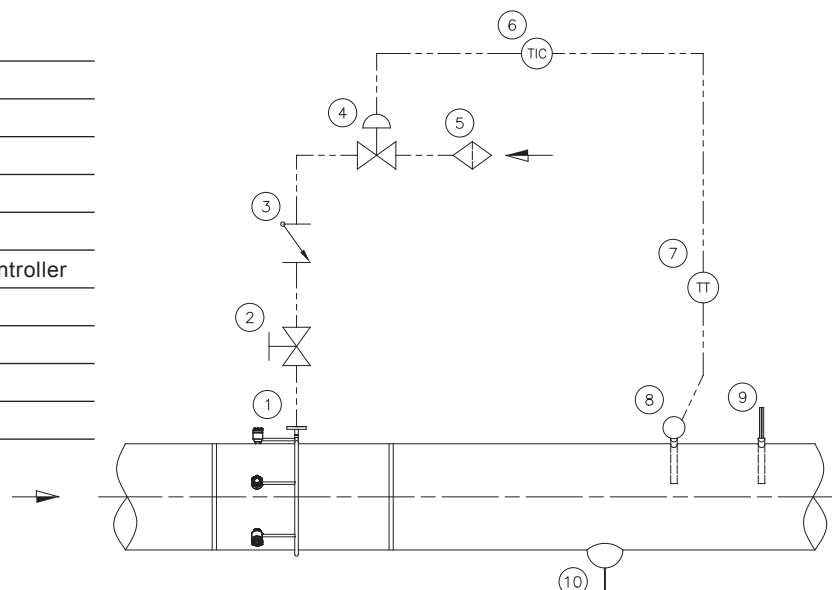
Nozzle	1A	2A	3A	4A	3B	3C	4C	5C	6C
$C_v$	0.5	1.0	2.0	3.0	4.0	6.0	8.0	10.0	12.0

Nozzle	5D	6D	7D	4E	4B	5E	6E	7E
$C_v$	15.0	18.0	21.0	24.0	4.0	30.0	36.0	42.0

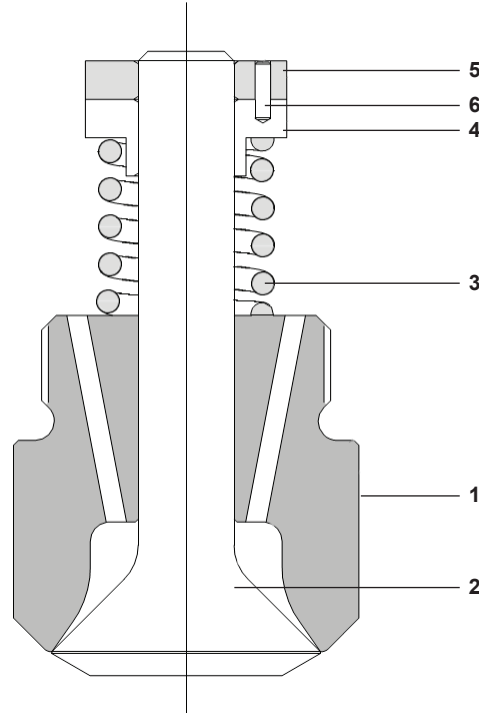
## Typical Installation

- |    |                                      |
|----|--------------------------------------|
| 1  | DAB Desuperheater                    |
| 2  | Manual Block Valve                   |
| 3  | Check Valve                          |
| 4  | Temperature Control Valve            |
| 5  | Strainer                             |
| 6  | Temperatura Indicator and Controller |
| 7  | Temperature Transmitter              |
| 8  | Temperature Sensor                   |
| 9  | Thermometer                          |
| 10 | Drain                                |



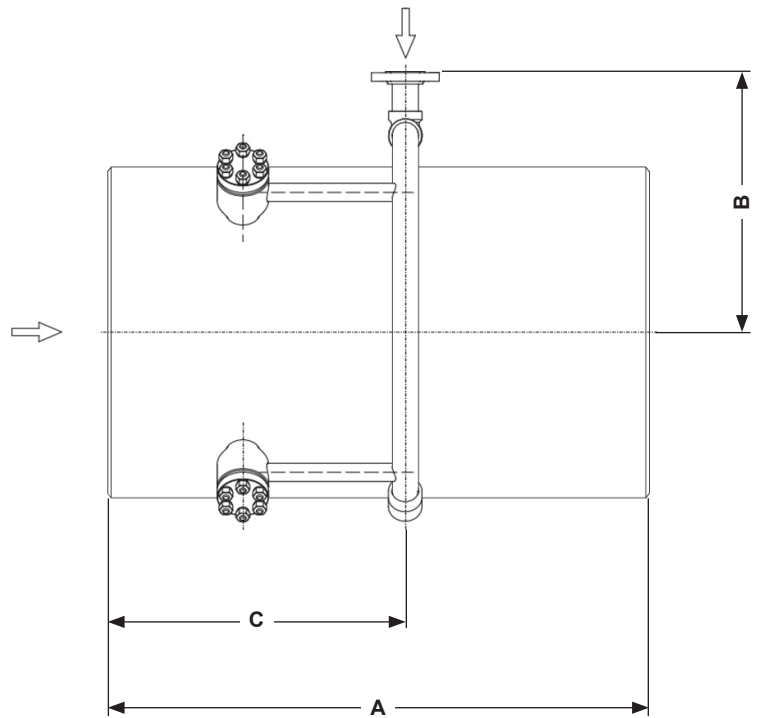
## List of Components

No.	Part
1	Body
2	Plug
3	Spring
4	Nut
5	Jam Nut
6	Locking Pin



## Dimensions (approximate) in inches

Nominal Pipe Diameter (in.)	A (in.)	B (in.)	C (in.)	Water Connection Maximum Diameter (in.)
24	39.4	19.0	17.4	4
26	39.4	19.9	17.4	4
28	43.4	20.9	17.4	4
30	43.4	21.9	17.4	4
32	43.4	22.9	17.4	4
34	47.3	23.9	17.4	4
36	47.3	24.9	17.4	6
38	47.3	25.9	17.4	6
40	47.3	27.0	17.4	6
42	47.3	28.2	17.4	6
44	47.3	743	17.4	6
46	51.2	29.3	17.4	6
48	51.2	32.8	17.4	6
50	51.2	31.9	17.4	6
52	51.2	32.9	17.4	6
56	55.2	35.5	35.5	6
60	55.2	37.5	36.3	6



The dimensions are typical. They depends on the quantity of nozzles are required. In accordance to our policy of continuous development and improvement, this specification is subjected to modification at any time without prior notice.

## Selection Guide

Pipe Size	24", 26", 28", 30", 32", 34", 36", 38", 40", 42", 44", 46", 48", 50", 52", 54", 58", 60".	<input type="text"/>
Pressure Class	150, 300, 600, 900 or 1500	<input type="text"/>
Body Materials	WCB, CF8M or WC9	<input type="text"/>
Nozzle Body Material	WCB or CF8M	<input type="text"/>
Trim Nozzle Material	420 Stainless Steel	<input type="text"/>
Cooling Fluid Piping Material	Carbon Steel, Alloy Steel or Stainless Steel	<input type="text"/>
Steam Pipe Material	Carbon Steel, Alloy Steel or Stainless Steel	<input type="text"/>

## Order Example

DAB	30	300	WCB	420	Carbon Steel	Carbon Steel
-----	----	-----	-----	-----	--------------	--------------

## How to Order

Example: 1 Hiter DAB Desuperheater in 30" class 300 WCB tubing, 420 stainless steel housing, carbon steel refrigerant piping material and carbon steel steam piping material.