

# spirax/sarco®

## Blowdown Separators “BDSP” Series

### Description

The Blowdown Separator system is an effective means of Processing water from the boiler during bottom blowdown reducing the pressures to atmospheric levels and cooling the residual condensate for safe discharge to drain. The BDSP units centrifugally separate the flash steam from the hot discharge systems. The separators are ASME Section VIII Div I constructed stamped. Various options and accessories are available.

### Typical applications

Boiler Blowdown controlling the presence of sediment and particulates in the boiler. Use with single or multiple boilers to handle the blow down loads and cool the effluent for safe discharge to drain.

### Standard Features

- Spirax Sarco centrifugal high efficiency flash tank
- Heavy duty C/S base
- Hydrotested, blasted, and coated with SSI Hi temp black enamel
- ASME Section VIII Code Stamped separator vessel with SS internal wear plate

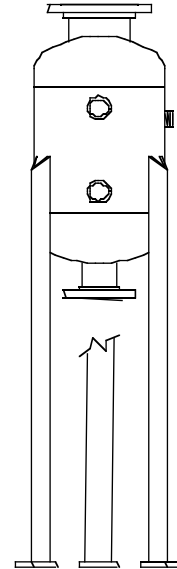
### Additional Options are available

### Suggested Specification

- Furnish and install where shown on plans, Spirax Sarco Inc. Model# **BDSP** \_\_\_\_\_ Blowdown Separator
- The carbon steel receiver shall be ASME Constructed and stamped for 150 PSIG WP. With integral Stainless steel wear plate.
- No threaded connections above 2" NPS on the package piping are permitted.
- The package shall be sized to meet (or exceed) the actual required blowdown system load.
- The package shall include a structural steel skid and painted with 1 coat Hi-Temp black enamel.

### Capacity

For sizing data, see Selection & Capacity Chart.



### Typical Construction

Model	BDSP- Series
PMO	150 psig
Design Pressure (PMA)	150 psig @ 550°F
Capacity Range	100 to 100,000 lbs./hr
Vessel	ASME Constructed and Stamped 150 psig @ 550°F
Hydrotest Pressure	225 psig
Construction Materials	Flash Vessel – Carbon Steel Supports- Carbon steel Piping - A106 Seamless Carbon Steel
Dimensions & Weight	See SSI Sales Drawings

<b>spirax/sarco®</b>	
<b>Approved for construction when signed and dated below:</b>	
Model: <b>BDSP-</b>	
Project/P.O. No.:	
Customer:	
Approved:	Date:

*Local regulations may restrict the use of this product below the conditions quoted. Limiting conditions refer to standard connections only. In the interests of development and improvement of the product, we reserve the right to change the specification.*