

spirax sarco

AE36A Automatic Air Eliminators/ Air Vents for Liquid Systems

Description

The AE36 range of automatic air eliminators/air vents is designed for use on hot and cold water installations. The body and cap are of austenitic stainless steel type 316L. With check valve the designation becomes AE36A.

Standards

This product fully complies with the requirements of the European Pressure Equipment Directive 97/23/EC.

Certification

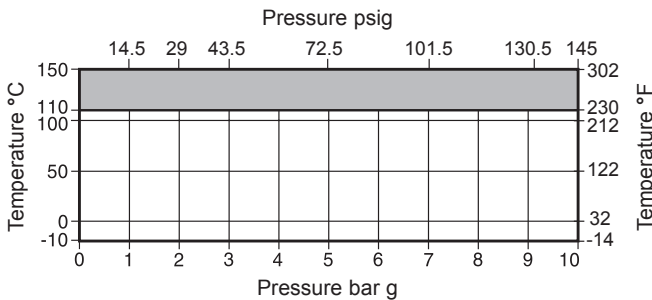
This product is available with Manufacturers' Typical Test Report. Note: All certification/inspection requirements must be stated at the time of order placement.

Sizes and pipe connections

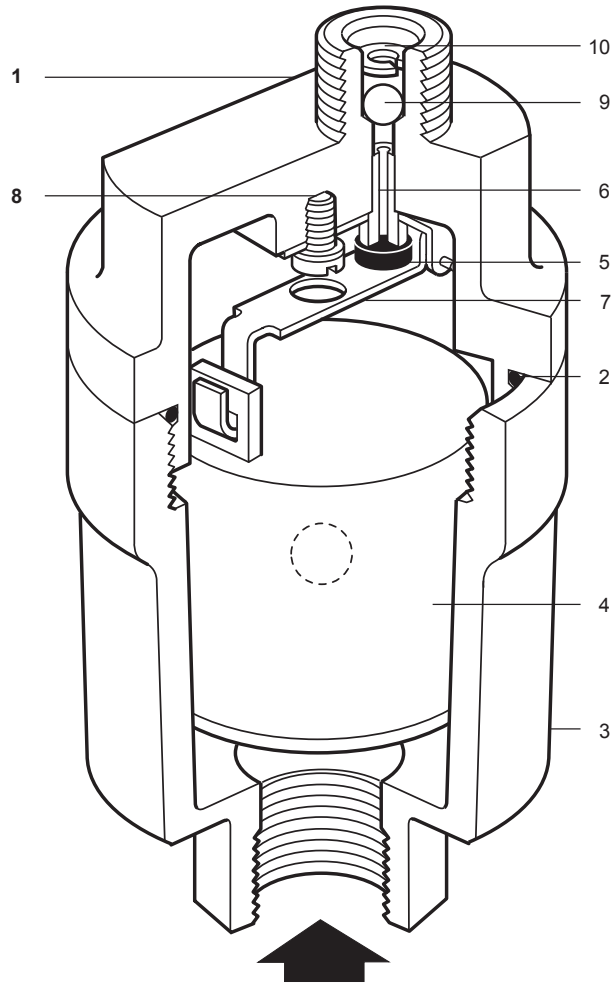
Inlet 1/2" female NPT (optional BSP)

Outlet 1/4" male NPT (optional BSP)

Pressure / temperature limits



The product **should not** be used in this region as damage to the internals may occur.



Body Design Conditions

PMA	Maximum allowable pressure	145 psig @ 302°F (10 bar g @ 150°C)
TMA	Maximum allowable temperature	302°F @ 145 psig (150°C @ 10 bar g)
	Minimum allowable temperature	14°F (-10°C)
PMO	Maximum operating pressure	145 psig @ 302°F (10 bar g @ 110°C)
TMO	Maximum operating temperature	230°F @ 145 psig (110°C @ 10 bar g)
	Minimum operating temperature	14°F (-10°C)
ΔPMX	Maximum differential pressure	116 psig (8 bar g)
Designed for a maximum cold hydraulic test pressure of 218 psig (15 bar g)		
	Minimum specific gravity of liquid	0.926

Materials

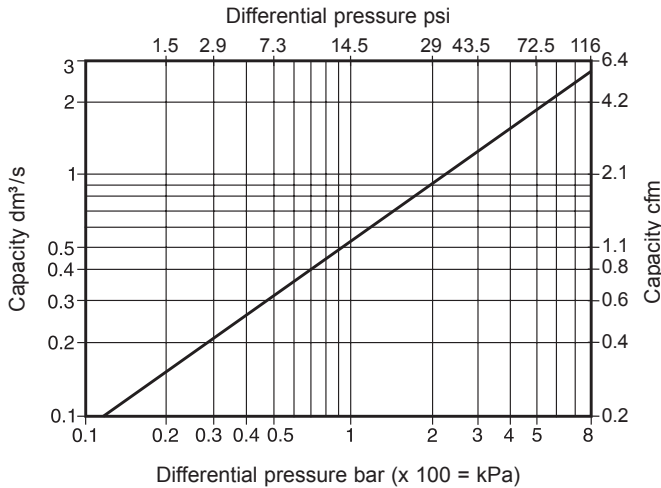
No.	Description	Material
1	Cap	Austenitic stainless steel type 316L ASTM A351 CF3M
2	Cap 'O' ring	Green Viton 75
3	Body	Austenitic stainless steel type 316L ASTM A351 CF3M
4	Float	Acetal co hostaform/stainless steel
5	Valve head	EPDM
6	Valve seat	Stainless steel BS 970 431 S29
7	Bracket/lever assembly	Stainless steel BS 1449 304 S11
8	Screw	Stainless steel BS 4183 18/8
9	Check valve ball (AE36A only)	Stainless steel AISI 440 B
10	Circlip	Stainless steel BS 970 302 S25

Local regulation may restrict the use of this product below the conditions quoted. Limiting conditions refer to standard connections only. In the interests of development and improvement of the product, we reserve the right to change the specification.

TI-P017-02-US 11.17

Free discharge capacity

For air at 61°F (16°C)



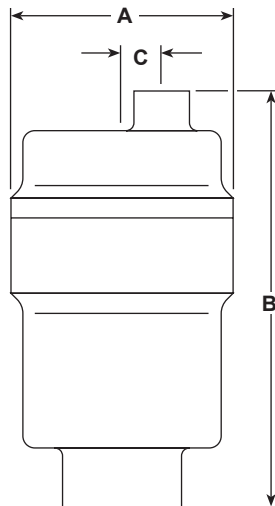
If the temperature of the air differs from 16°C, the discharge capacity from the graph can be corrected by multiplying it by the following equation:

$$\frac{289}{273 + T} \quad (T \text{ is the actual temperature in } ^\circ\text{C})$$

It may be assumed that the temperature of the air is equal to the temperature of the water.

Dimensions/weight (approximate) in mm and kg

Version	A	B	C	Weight
AE36A	2.2 (56)	4.1 (105)	0.4 (10)	1.5 (0.7)



Safety information, installation and maintenance

For full details see the Installation and Maintenance Instructions (IM-P017-03) supplied with the product.

Installation note:

The automatic air eliminator/air vent should be installed vertically with the inlet at the bottom. We recommend piping the discharge from the air eliminator/air vent to a suitable drain point.

How to order

Example: 1 off Spirax Sarco ½" AE36A automatic air eliminator/air vent with check valve having screwed NPT connections.

Spare parts

The spare parts available are shown in solid outline. Parts drawn in broken line are not supplied as spares.

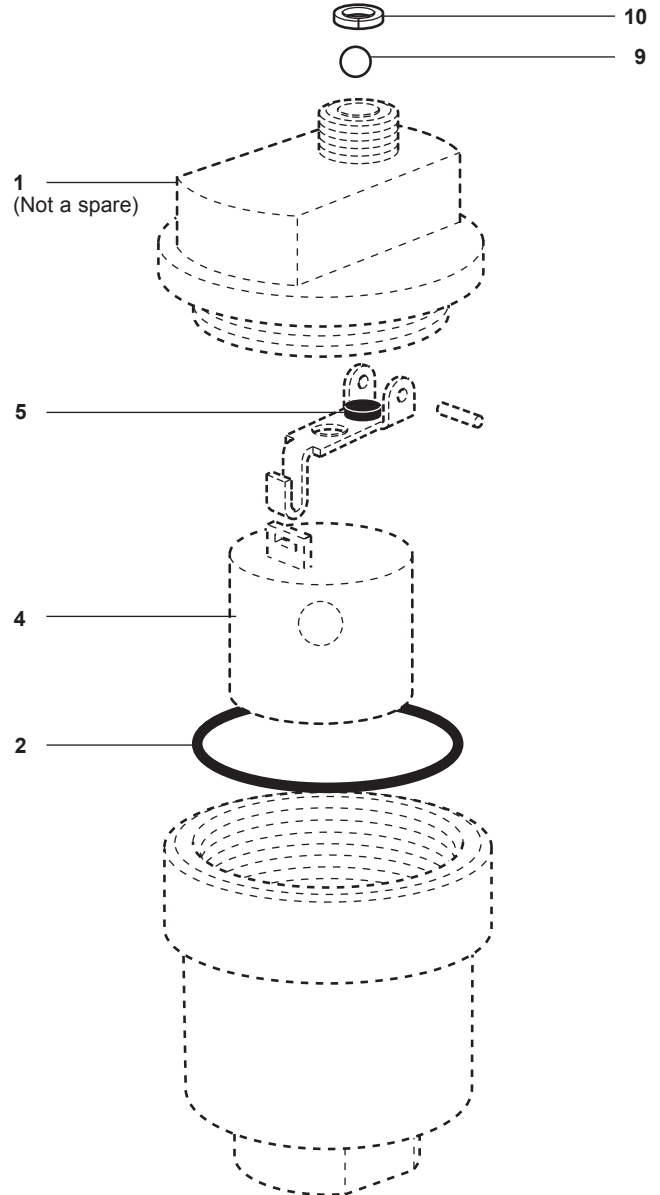
Available spares

Maintenance kit comprising: **2, 4, 5, 9, 10**
Valve cone, float, cap 'O' ring, check valve ball and check valve circlip



How to order spares

Always order spares by using the description given in the column headed 'Available spares' and state the size and type of automatic air eliminator/air vent.

Example: 1 - Maintenance kit for a Spirax Sarco ½" AE36A automatic air eliminator / air vent with check valve.



Recommended tightening torques

Item	 or in (mm)		lb-ft (N m)
1	1.18 (30)		7.4-8.9 (10-12)
8	Cheesehead	M4 x 6	1.8 to 2.1 (2.5-2.8)