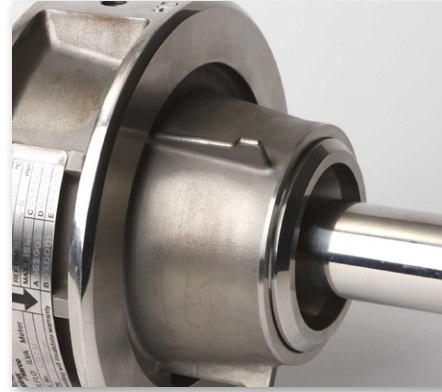
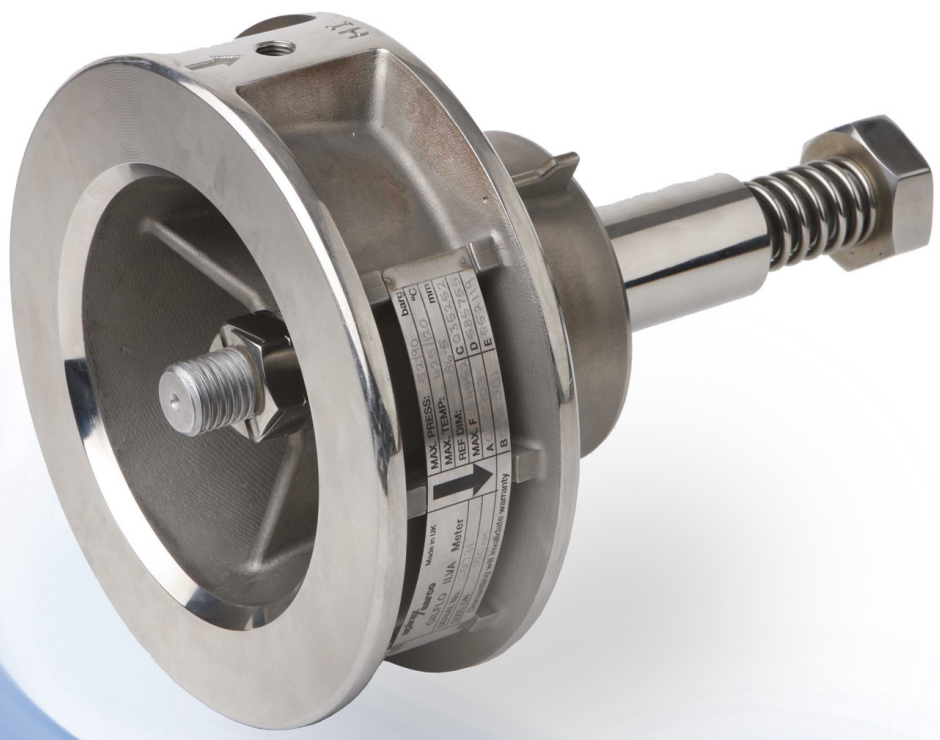


flow
measurement
solutions

Gilflo ILVA flowmeters

for steam, liquids and gases



First for Steam Solutions

spirax
sarco

EXPERTISE | SOLUTIONS | SUSTAINABILITY

Gilflo ILVA flowmeters

for steam, liquids and gases

Gilflo ILVA flowmeters will help you implement cost reduction by accurately metering the energy you use. This can lead to improved profitability and a reduction in your carbon footprint.

The Spirax Sarco Gilflo ILVA flowmeter is perfectly suited for use with most industrial fluids including steam, gases and liquids.

The benefits of flowmetering

Of all the costs your company can control, your energy bill is one of the largest. With the high cost of fuel, it is increasingly important to accurately meter the energy you consume - because the better you understand how and where you use your energy, the easier it is to manage and reduce it.

Spirax Sarco can offer you a range of flowmetering technologies to suit every application so you always have the correct solution whatever the situation.

Measuring with Spirax Sarco's range of Gilflo ILVA flowmeters will provide you with the accurate flow data you need to identify and implement energy saving measures. You could improve profitability, reduce wastage and meet carbon footprint reduction targets. All of which contribute to yours becoming a more competitive and sustainable business.



First for Steam Solutions



The benefit of high turndown

Due to its profiled cone and spring, the Gilflo ILVA is able to measure from full flow down to very low flowrates. This is known as turndown and means that off peak and low demand flow is metered just as accurately as higher flowrates. This gives the benefit that the true costs are known.

Not all technologies can gather accurate flow information in all process conditions or whatever the demand. With some, the signal simply disappears when the velocity drops off, consequently the steam, gas or liquid is still flowing, but without being measured.

Spirax Sarco's Gilflo ILVA flowmeter continues to measure where other technologies can't because it allows for accurate and repeatable measurement over a wide flow range turndown of 100:1.

The benefit of compact installation

The larger units in the available size range can be supplied with a compact stem which is easily fitted to the Gilflo ILVA unit. This simplifies and reduces the required length of pipework needed to accommodate its' installation which saves installation time and reduces installation costs.

To provide accurate and repeatable measurements the profile of the flow-stream also has to be undisturbed as it enters and leaves the flowmeter.

This would usually involve finding an uninterrupted length of straight pipework upstream and downstream to condition the steam flow, which severely restricts your choice of where the flowmeter can be fitted.

The alternatives are to either install a separate flow straightener or invest in expensive modifications to your pipework.

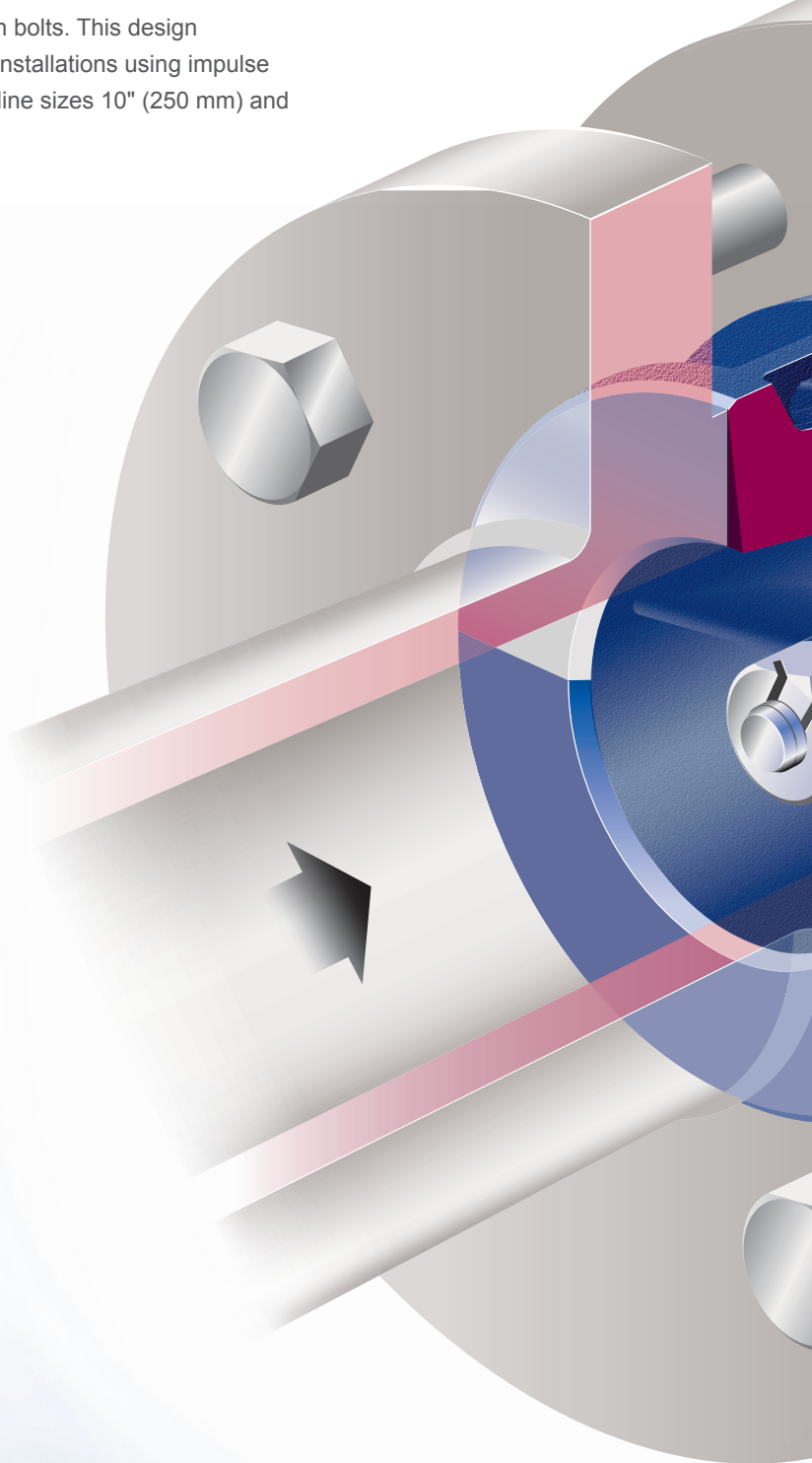
With the Gilflo ILVA range you don't have to do either, because it is designed with a specially profiled cone that helps to reshape and flatten the flow stream profile just before the measurement point.

The ultra compact wafer design of the Spirax Sarco Gilflo ILVA flowmeter range also means that its installed length is much shorter than almost any other technology, so it can be installed close to pipe bends, valves or other components that would prevent other types of flowmeter being fitted. Spirax Sarco's Gilflo ILVA flowmeter can even be installed into pipelines that were never designed to accept a flowmeter.

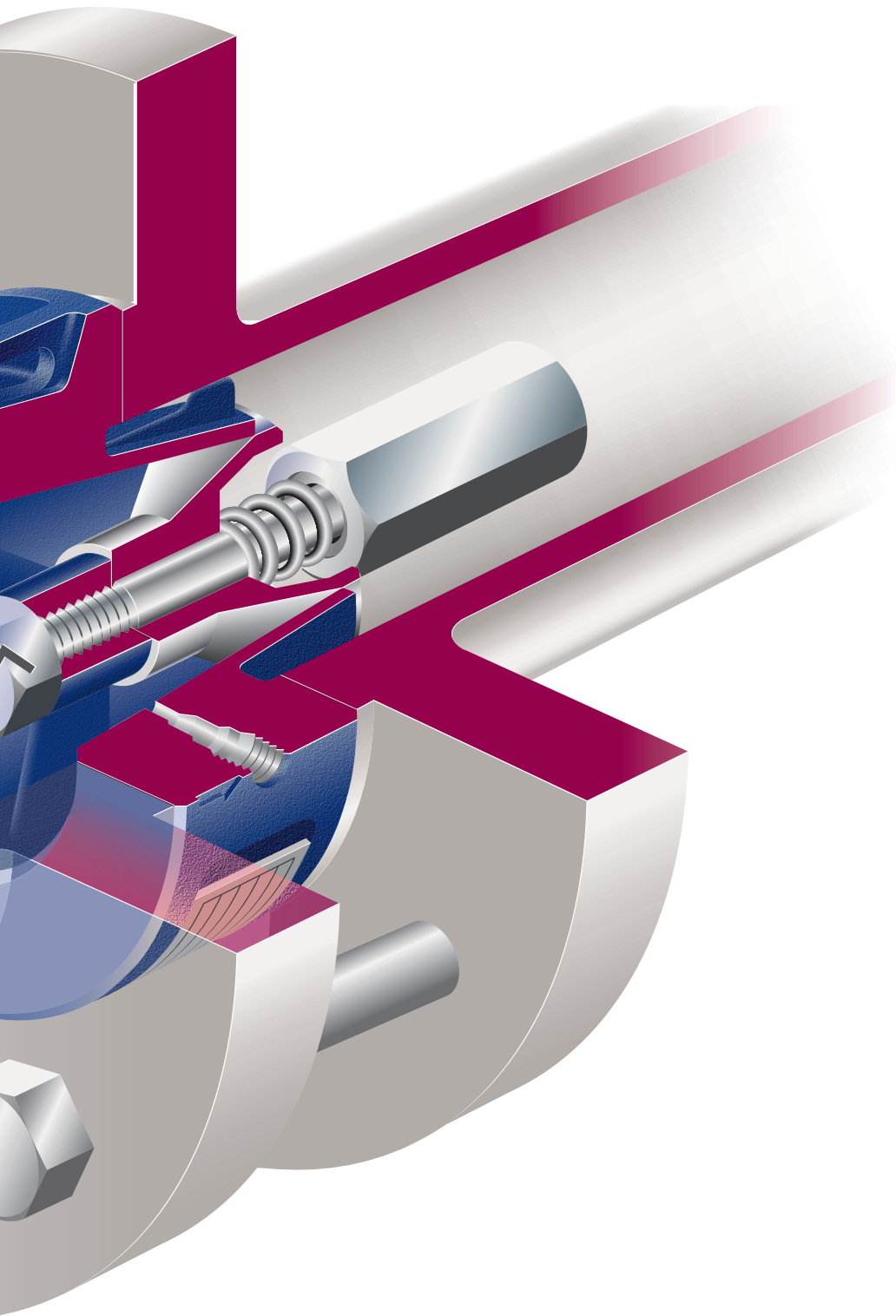
In summary; Spirax Sarco's Gilflo ILVA flowmeter only requires six pipe diameters of straight pipe upstream and three downstream, consequently it is ideal for confined spaces where there are only short pipe runs.

Large Gilflo ILVA's now come with a compact stem

The wafer design of Spirax Sarco's Gilflo ILVA flowmeter is now more compact when ordered with the compact stem. The compact stem directly connects the Gilflo ILVA and the DP transmitter and only requires assembly using ten bolts. This design saves on both installation time and cost when compared to installations using impulse lines and therefore reduces process downtime. Available in line sizes 10" (250 mm) and 12" (300 mm).



First for Steam Solutions



Proven reliability

The Gilflo ILVA flowmeter is a trusted, proven member of the well established and comprehensive family of Spirax Sarco flowmeters that has been in use within industrial flowmetering applications for more than 30 years.

A broad selection of associated sensors and electronic instrumentation has been developed to complement the Gilflo ILVA range, thus making it one of the most adaptable flowmeters available.

Would you like help with your flowmeter application? The Gilflo ILVA is one of a comprehensive range of technologies available from Spirax Sarco. Why not let one of our engineers help you size and specify the most suitable flowmeter for your application.



Range availability:

- Sizes DN50 (2") to DN300 (12")
- All stainless steel 316L body construction
- Pressure rating to match flange specifications
- Temperatures up to 450°C (842°F)

Applications:

- Cost metering for energy management
- Custody transfer
- Process and control applications
- Boiler load control

Commonly metered fluids:

- Saturated steam
- Superheated steam
- Condensate
- Natural gas
- Nitrogen
- Carbon dioxide
- Compressed air
- Ethylene
- Fuel oil

Some products may not be available in certain markets.

Further details of our flowmeter products are available on our website www.spiraxsarco.com/us.

First for Steam Solutions

Product features and benefits

Key features

A compact stem version is now available for sizes DN250 and DN300 (10" and 12").

Unequalled turndown rate, up to 100:1.

Flexible to fit in complex short pipe runs at point of use.

High pipeline unit accuracy, $\pm 1\%$ of reading over a much wider flow regime.

Ultra compact installation, requires only six pipe diameters upstream and three downstream.

Wafer design for easy installation.

No expensive line size changes required to achieve low flow performance.

Robust, well proven product technology.

Reliability has been proven over a time span of 30 years and 10,000 installations.

Extended 3 year Spirax Sarco warranty.

Designed and manufactured by Spirax Sarco - an ISO 9001:2000 approved company.

Key benefits

Easier faster installation time and reduced costs.

Easier faster installation time and reduced costs.

Metering at points not previously possible.

Accurate costing.

Lower cost of installation.
Less downtime.

Easier, faster and reduced installation costs.

Lower installation costs and reduced installation time.

Lower total cost of ownership – less likely to suffer damage which lowers maintenance costs.

Lower cost of ownership.

Lower cost of ownership

Confidence in a world class organization that is externally approved.

US Regional Offices

Northeast

500 W Wilson Bridge Road
Suite 135
Worthington, OH 43085
Phone: 614-436-8055

Mid-Atlantic

4647 Saucon Creek Road
Suite 102
Center Valley, PA18034
Phone: 1-800-251-7676

Southeast

1150 Northpoint Blvd
Blythewood, SC 29016
Phone: 803-714-2125

Midwest

1500 Eisenhower Lane
Suite 600
Lisle, IL 60532
Phone: 630-493-4525

Southwest

203 Georgia Avenue
Deer Park, TX 77536
Phone: 281-478-4002

West

8141 E. Kaiser Blvd
Suite 311
Anaheim Hills, CA 92808
Phone: 714-279-0417

2150 Miller Drive
Longmont, CO 80501
Phone: 1-800-356-9362



Spirax Sarco, Inc.
2150 Miller Drive, Longmont, CO 80501
T 800-356-9362
F 303-682-7062
www.spiraxsarco.com/us