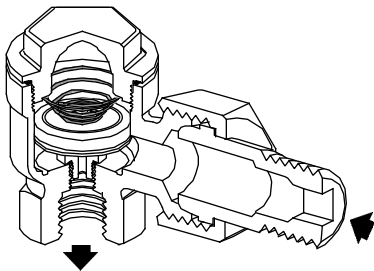
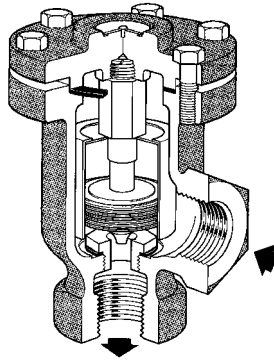


Balanced-Pressure Thermostatic Steam Traps



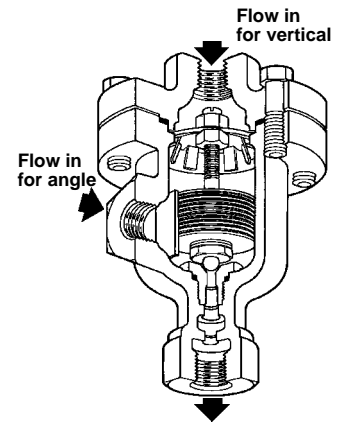
Type

| | |
|---------|-----------------------|
| RTA-125 | 25" vac-125"/ 8.6 bar |
| RTH-25 | 25" vac-25/1.7 bar |
| RTH-125 | 0-125 /8.6 bar |
| TV-125 | 0-125/8.6 bar |



Type

| |
|----------------------|
| T250 Angle |
| T-250 Straightway |
| 0-250 psi / 17.2 bar |



Thermo-Matic®

| |
|-------------------------|
| TM-600, TM600L, TM600N |
| 5-600 psi / .3-41.4 bar |

Thermostatic steam traps sense the temperature difference between steam and condensate using an expanding bellows to operate a valve head. They are wide open when cold providing a self-draining freezeproof design with high air venting capability. These traps are self-adjusting and will work equally well at any pressure up to the maximum for each type as stamped on the nameplate. Bellows thermostatic traps are **NOT RECOMMENDED FOR SUPERHEAT SERVICE** or for applications where elevating condensate may damage the bellows.

Installation

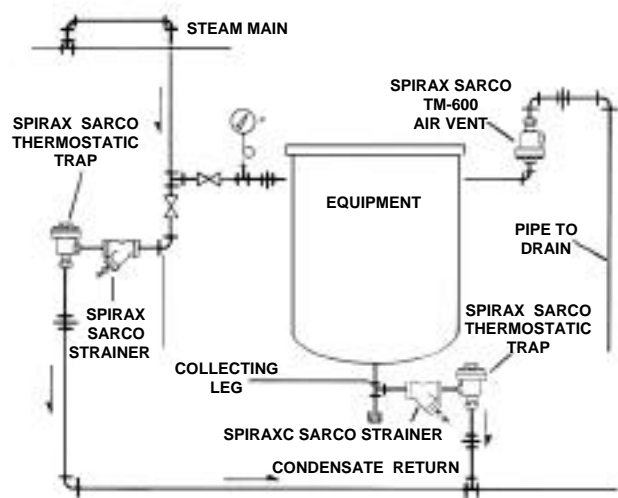
A pipeline strainer should be installed ahead of any trap to protect the head and seat from dirt and scale. Install at low point of equipment with a collecting leg before the trap. For best operation, the trap should be installed with the bellows in a horizontal position. For a freezeproof installation lines must be pitched toward the trap for gravity flow; keep trap outlet free of any piping.

Maintenance

Allow the trap to cool down before disassembly to prevent over-expansion damage to the bellows. The thermostatic bellows is the only working part and its valve head and seat must be clean for tight shutoff. Bellows usually expand slightly when defective and will not move when placed in boiling water. *Note: Do not heat bellows with*

torch or flame as it could burst. The TM-600 bellows module is factory calibrated and its setting must not be changed in the field.

Repair Parts: See TIS for trap model.



Typical Steam Main and Equipment Installation

Torque Requirements for Balanced Pressure Steam Traps

RTA, RTH, & TV Series BP Traps

| Torque Ft-Lbs. | | |
|--------------------|------------|-------|
| Size & Type | Valve Seat | Cap |
| 1/2", 3/4" RTA-125 | 20-25 | 50-55 |
| 1/2", 3/4", TH-125 | 20-25 | 50-55 |
| 1/2", 3/4", TV-125 | 17-21 | 78-85 |

TM-Series

| Torque Ft-Lbs. | | |
|------------------|------------|--------------|
| Size & Type | Valve Seat | Cover Screws |
| 1/2", 3/4" TM600 | 68-70 | 25-30 |

T250-Traps

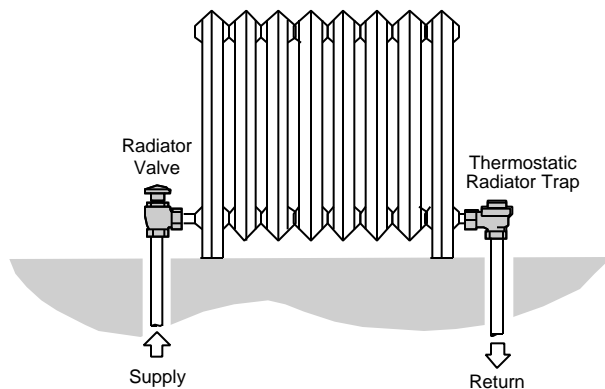
| Torque Ft-Lbs. | | | |
|--|------------|-------------|--------------|
| Size & Type | Valve Seat | EIE. Holder | Cover Screws |
| 1/2", 3/4" 1" T250 Strway & Angle Traps | 45-55 | 27-31 | 20-25 |

Trap Pressure Ratings

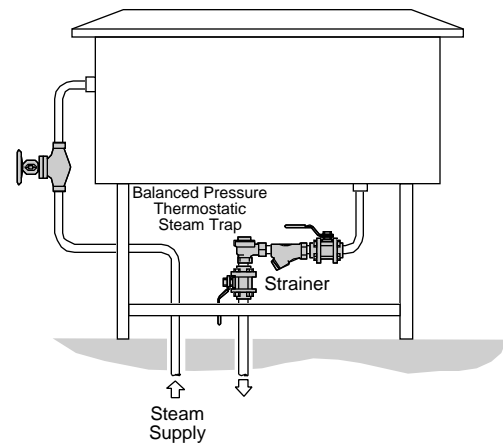
| Trap | psig/Bar |
|----------------|-------------|
| RTA-125 Series | 0-125/ 8.6 |
| RTH-125 Series | 0-125/ 8.6 |
| T-250 Series | 0-250/ 17.2 |
| TM-600 Series | 0-600/41.4 |

Typical Hook-Ups

Steam Radiator



Trapping Small Utensil Sterilizer



Spirax Sarco Applications Engineering Department

Toll Free at:
1-800-833-3246

spirax
/sarco®

SPIRAX SARCO, INC. • 1150 NORTHPOINT BLVD. • BLYTHEWOOD, SC 29016
PHONE 803-714-2000 • FAX 803-714-2222