

SYKIT FOOD+ Kit for Pressure Gauge



Description

Kit for pressure gauge consisting of ball valve M10ECF4, adaptor, cooling element and 2 x gasket.

* The pressure gauge (SY230) is not included and must be ordered separately (see TI-P027b03).

Standards

The parts of the pressure gauge kit are available with a declaration of conformity according to EC1935/2004.

Certification

The individual components are available with a material certificate in accordance with EN 10204 3.1.

Note:

Only available if explicitly stated when ordering.

Construction, diameters, and connections

Description	Type	Material	Connection
Gauge valve	M10ECF4	RVS 316L	1/2" BSP T Rp
Adaptor	SYK-R	RVS 316L	1/2", BSP T (Rp) x BSP P (G)
Gasket (2 pieces)	SYPAK	RVS 316	1/2", M20 x 1,5
Cooling element	SY-CE	RVS 316L	1/2" BSP P MxF

Pressure and temperature limits

Design conditions of the housing	PN100
Minimum operating temperature	0°C
Maximum operating temperature	230°C @ 0 bar eff.
Maximum operating pressure saturated steam	12 bar eff.

Installation

When a pressure gauge is used for steam, the gauge must be protected from heat by means of a cooling element with a shut-off valve. Mount the pressure gauge vertically in a clearly visible location.

Specification

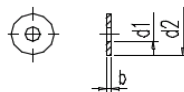
1 - Pressure gauge kit Spirax-Sarco, type SYKIT FOOD+

Weight (approximately) in kg

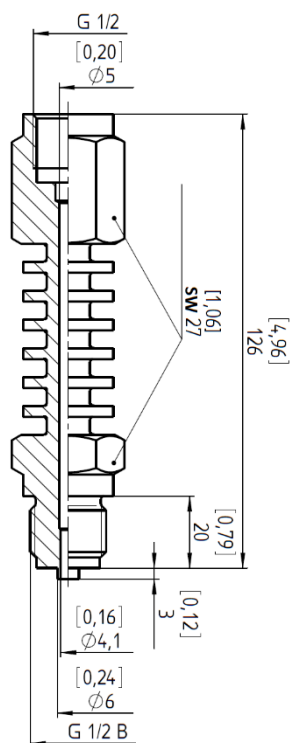
Type	Weight (kg)
SYKIT FOOD+	1,3 kg

Dimensions (approximately) in mm

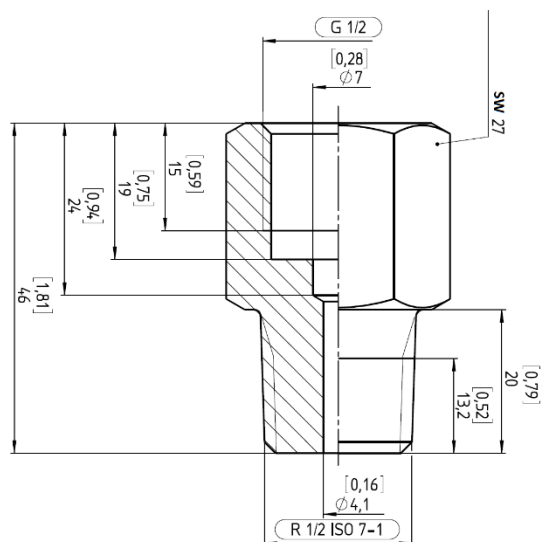
SY-Pak : Gasket (d1 = 6,2 mm, d2 = 17,5 mm, b = 2 mm)



SY-CE : Cooling element



SYK-R : Adaptor



See TI-167-28 for the dimensions of the ball valve M10ECF4.