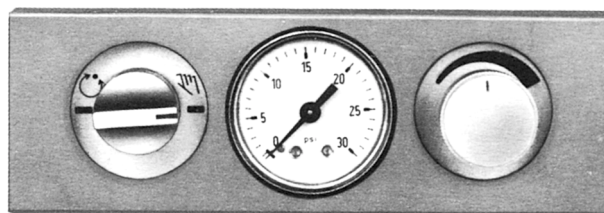




## Auto/Manual Station Type 361

**Type 361 Auto/Manual station** is connected to the output signal of a pneumatic controller. It allows slooth changeover from automatic to manual control and viceversa.

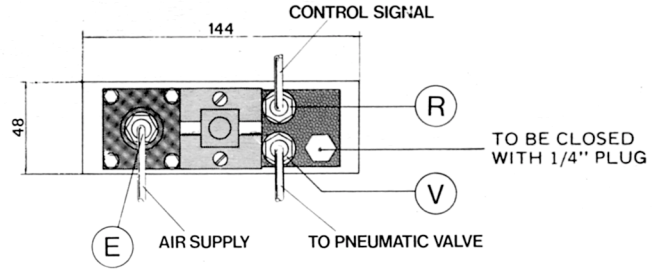
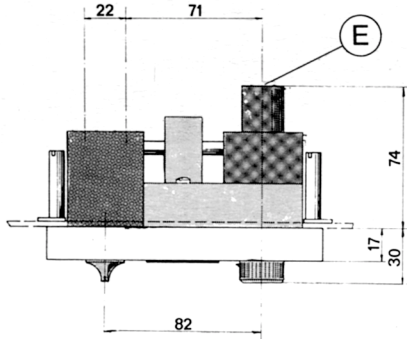
It is also possible to temporarily exclude the controller and position the valve manually during maintenance. The Auto/Manual station incorporates a pneumatic two-position switch, a non-bleed high accuracy pressure regulator having a very stable output signal and a pressure gauge showing the output pressure.



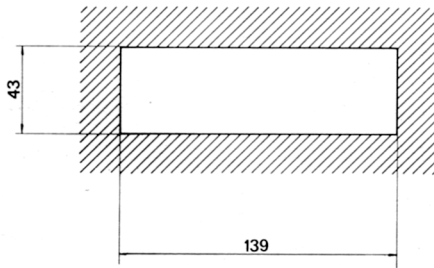
### GENERAL SPECIFICATIONS

TYPE OF INSTRUMENT	auto/manual station
AMBIENT TEMPERATURE LIMITS	maximum + 65° C    minimum -15° C
COMPRESSED AIR SUPPLY	20 psi (1.4 bar) or 35 psi (2.4 bar)
OUTPUT SIGNAL	3 to 15 psi (0.2 to 1 bar) or 6 to 30 psi (0.4 to 2 bar)
PNEUMATIC CONNECTIONS	for air supply and output signal: 1/4" NPT female
FRONT PANEL	modular type, die cast aluminium with olive grey enamel finish
MOUNTING	flush panel
WEIGHT	about 1 kg
DIMENSIONS	144 x 48 mm (see drawings)
IDENTIFICATION CODE NUMBER	7.837.1411.000

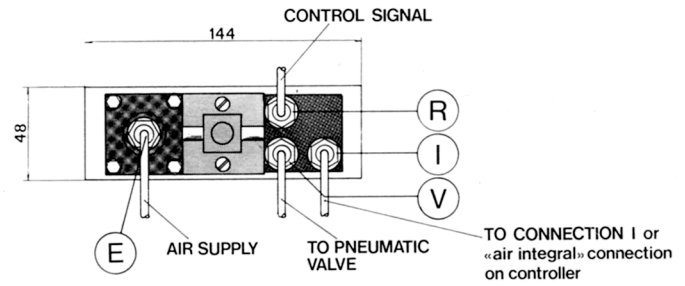
**DIMENSIONS (mm)**



**Auto/Manual station connections to proportional controller**



**Panel cut-out**



**Auto/Manual station connections to proportional-integral controller**