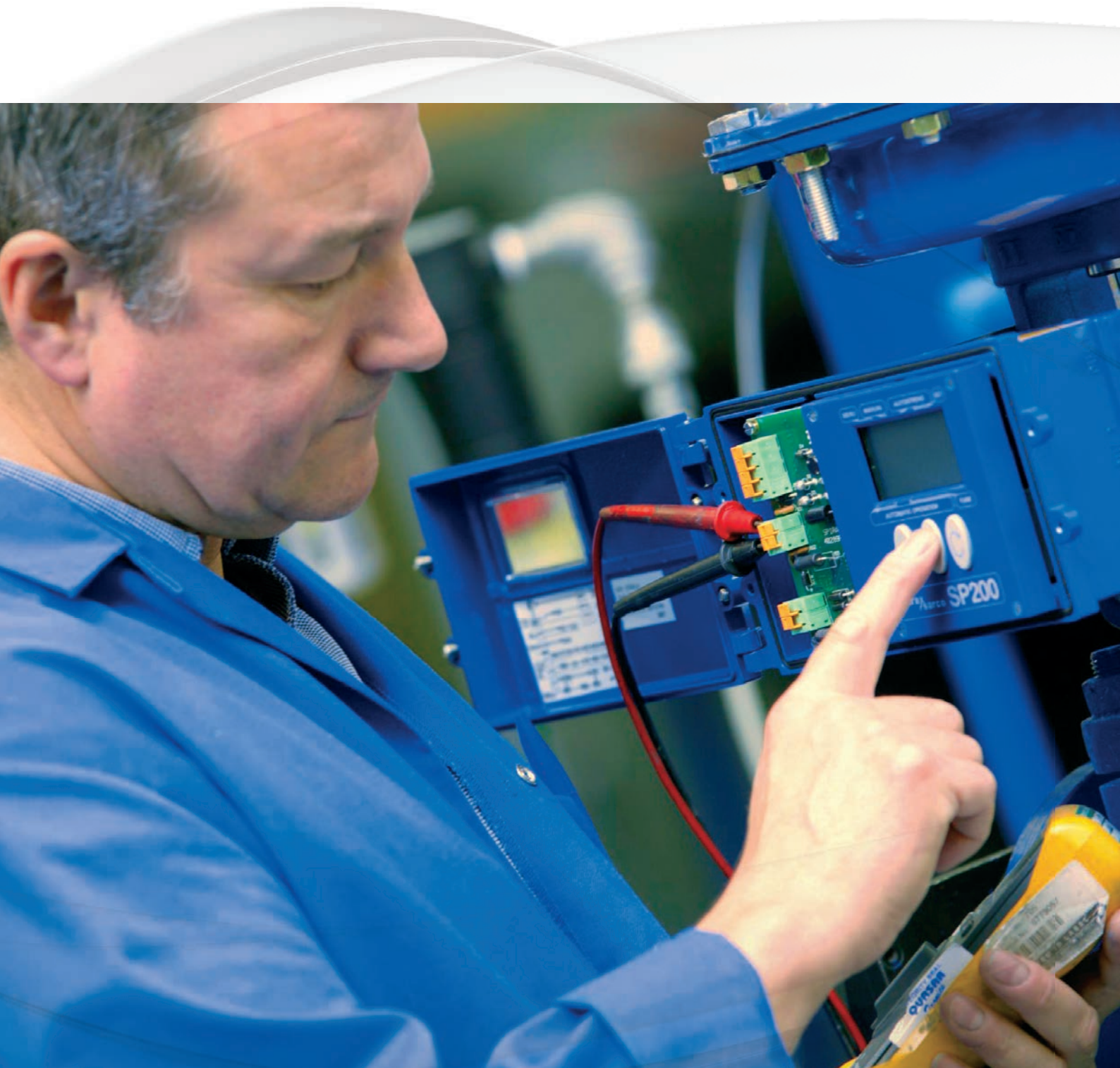


# Controls and Instrumentation

an introduction



*First for Steam Solutions*

EXPERTISE | SOLUTIONS | SUSTAINABILITY

**spirax**  
**sarco**

**spirax**  
**/sarco**



## A controls solution provider

Spirax Sarco provides Knowledge, Service and Products for the efficient control of steam and other industrial fluids...

Based in Cheltenham, England, the origins of the company date back to 1910. We are a British public company and have been quoted on the stock exchange for over 48 years. Each year the company has reported a strong financial performance and continues to expand its business around the world.

Our aim is to provide a controls solution that helps our customers achieve operational improvement through their production capability, usually in the form of reduced energy usage, improved product quality, lower emissions and greater production throughput.

The solutions we provide can be from a replacement product, extending to a complete controls solution.

What makes us different is that we can take a holistic view of the system and, by working in partnership with our customer's technical engineering teams, deliver measurable and sustainable improvements.

Each customer situation is considered in terms of their process requirements, the engineering and production skills of the people involved in running and maintaining the plant and the budget available. Thus, a solution that best fits the customer profile is proposed.

### Spirax Sarco the facts:

- Founded in 1910.
- Represented in almost every country in the world.
- Quoted on the London Stock Exchange.
- Provides Knowledge Service and Products for the efficient control of steam and other industrial fluids.
- Controls solutions are product and system based.
- Takes a holistic view of the plant.
- Delivers measurable and sustainable improvements.
- Over 100,000 customers worldwide buying regularly.



# Our history of controls

## A progressive company with traditional values

With industry practices and customer expectations constantly evolving, success can only be maintained with a progressive attitude toward change.

Spirax Sarco controls and instrumentation have long been an essential part of the product offering. Naturally, many changes have occurred to the business, our products and people - a result of organic growth and growth from acquisition.

Importantly, these changes have been achieved without losing the essence of what has made the company a success. For example, our employment and customer service philosophies, inherited from a family run business dating back to 1910, remain evident even today.

### At a glance:

- 2005 – Mitech severe service and Emco metering businesses acquired.
- 2005 – Clean service control valves introduced.
- 2001 – M&M piston actuated and solenoid valve business acquired.
- 1993 – Jucker control valve and instrumentation business acquired.
- 1992 – Dedicated controls and Instrumentation unit formed.
- 1989 – Boiler house controls launched.
- 1986 – Range of metering launched.
- 1972 – Humidification controls introduced.
- 1963 – Drayton control valve and instrumentation business acquired.
- 1960 – Self-acting pressure controls range introduced.
- 1910 – Spirax Sarco company forms and sells self-acting temperature controls.





Our employment and customer service philosophies were inherited from a family run business dating back to 1910 and still remain evident today







The cross-pollination of successes from one industry to another is a key benefit to our customers





# Experience

Products and ideas can always be copied but hard won expertise accrued through years of experience is difficult to emulate...

The scope of Spirax Sarco's controls activity is worldwide and customers from a broad range of industry and commerce are serviced. Institutional and Government establishments such as Hospitals, Prisons and Universities and processors within the food, pharmaceutical, chemicals and plastics industries are all examples.

Whilst focused primarily on steam in its various grades (saturated plant, superheated, clean and pure), our fluid experience extends to oils, water, nitrogen, petroleum, natural gas, de-ionised water and many other chemicals and gases as demanded by the customer – for both general and special service.

Applications are equally as diverse and extend from simple tanks to pressure vessels, process vessels and reactors, heat exchangers and turbines.

This large industry and application knowledge means our direct sales engineers are constantly stimulated to provide solutions to many types of control problems. The resulting cross-pollination of successes from one industry to another is a key benefit to our customers.

## There is no substitute:

- Well-trained and highly experienced sales engineers.
- Global business.
- Serving a wide range of industries.
- Fluid focus is steam and its variants.
- Experienced in the control of oils, water and many chemicals and gases.
- Diverse range of applications.
- Customers benefit from cross-pollination of successes from one industry to another.

# Products

## Control solutions

The core business proposition of Spirax Sarco has not changed over the years but the products required to deliver the proposition have. These changes have occurred in line with the availability of new technologies and changing customer expectations.

Today Spirax Sarco has a comprehensive range of controls and instrumentation products available to its customers; general and special service control valves, positioners, electric and pneumatic actuators, controllers and transmitters, flowmeters and boiler controls.

## Our approach is to provide:

---

Choice - the right product for the job.

---

Quick delivery - through local stocks and configuration.

---

Quality of people, product design, manufacture and tested to international quality assured standards.

---

Reliability from attention to detail in design, manufacture and correct application of the product.

---

Ease of maintenance through design and parts interchangeability, and local stock of spares.

---

Service from a worldwide network of expert controls specialists and sales and service engineers.

---

Value for money by providing all of these things at a competitive price.

---

## Product offering:

- General service control valves.
- Special service control valves.
- Safety valves.
- Self-acting, pneumatic and electric actuation.
- Positioners and other control interface devices.
- Pneumatic and electric controllers and transmitters.
- Flowmeters.
- Boiler controls.
- Precisely matched steam control valves that form an integral part of our heat exchange package solutions.
- All capable of being networked for centralised control and monitoring.





Spirax Sarco has a comprehensive range of controls and instrumentation products available to its customers







When you choose Spirax Sarco you have access to 800 direct sales engineers, controls specialists in 32 countries and a global service network, which means you are never alone; wherever you are in the world

A	B	C	D	E	F	G	H	I	J	K	L	M	N	O	P
<b>spirax sarco</b>															Sheet No: 1 of 1
C SERIES CONTROL VALVE DATA SHEET															Serial No:
4 Enquiry Reference: KYZ-290905 Rev: 1															Went's Check: 0
5 Date: 25/05/2005															Qty: Number AD
6 Customer Reference															Order Name
7 Sales Reference															Sale Location
8 Project Title															Customer Name
9 Project Reference															Customer Location
10 Description															Engineer
11															Engineer Location
12 Spirax Sarco Product Model Number															Product Unit Contact: <a href="mailto:RobCleave@SpiraxSarco.com">RobCleave@SpiraxSarco.com</a>
13 ORDER NO: LIND Cv60 SWE 600 - PH1533A1 - None															
14 Process Data Relevant to Control Valve Selection															
15 Service Application															
16 Inlet area class															
17 Inlet air temp															
18 Inlet Air temp															
19 Valve Design Press															
20 Max Safe Working Press															
21 Pipe material															
22 Pipe size Inlet Dia															
23 Pipe size Outlet Dia															
24 Pipe connection															
25 Valve insulation															
26 Valve insulation															
27 Process Fluid															
28 Upstream phase															
29 Process Conditions															
30 Flow Rate															
31 Inlet press P1															
32 Outlet press P2															
33 Inlet temp T1															
34															
35															
36															
37															
38															
39															
40															
41															
42															
43															
44															
45															
46															
47															
48															
49															
50															
51															
52															
53															
54															
55															
56															
57															
58															
59															
60															
61															
62															
63															
64															
65															
66															
67															
68															
69															
70															
71															
72															
73															
74															
75															
76															
77															
78															
79															
80															
81															
82															
83															
84															
85															
86															
87															
88															
89															
90															
91															
92															
93															
94															
95															
96															
97															
98															
99															
100															



## Before, during and after sales

By engaging with our well-trained and highly experienced sales engineers early in your improvement or expansion programme, you are sure to achieve the best price performance from your controls.

Correct selection of the product is key to achieving high performance and long service life. Depending on the circumstances this can be a complex decision.

Spirax Sarco has its own dedicated sizing and selection software, consequently; accurate selection decisions can be made quickly and reliably.

Installation, commissioning and maintenance services are readily available from our highly trained engineers whose knowledge is second to none in the industry.

When you choose Spirax Sarco you have access to 800 direct sales engineers, controls specialists in over 32 countries and a global service network, which means you are never alone; wherever you are in the world.

### You are never alone:

- 800 well-trained and highly experienced direct sales engineers.
- Controls specialists in over 32 countries.
- Consultative approach to solution delivery.
- Supported by dedicated sizing and selection software.
- Free of charge installation advice.
- Commissioning and after sales service engineers.
- Worldwide network of companies, agents and resellers.
- Over 32 training centres dedicated to spreading knowledge to our customers.
- Secure investment for the user.

## Research and development

An active research and development programme is frequently the lifeblood of any long-term successful organisation and Spirax Sarco is no different in this respect.

For many organisations, time and cost pressures limit the amount of product performance testing that can take place during the development phase, prior to product introduction. The result for the user is an increased risk of product failure when making an investment.

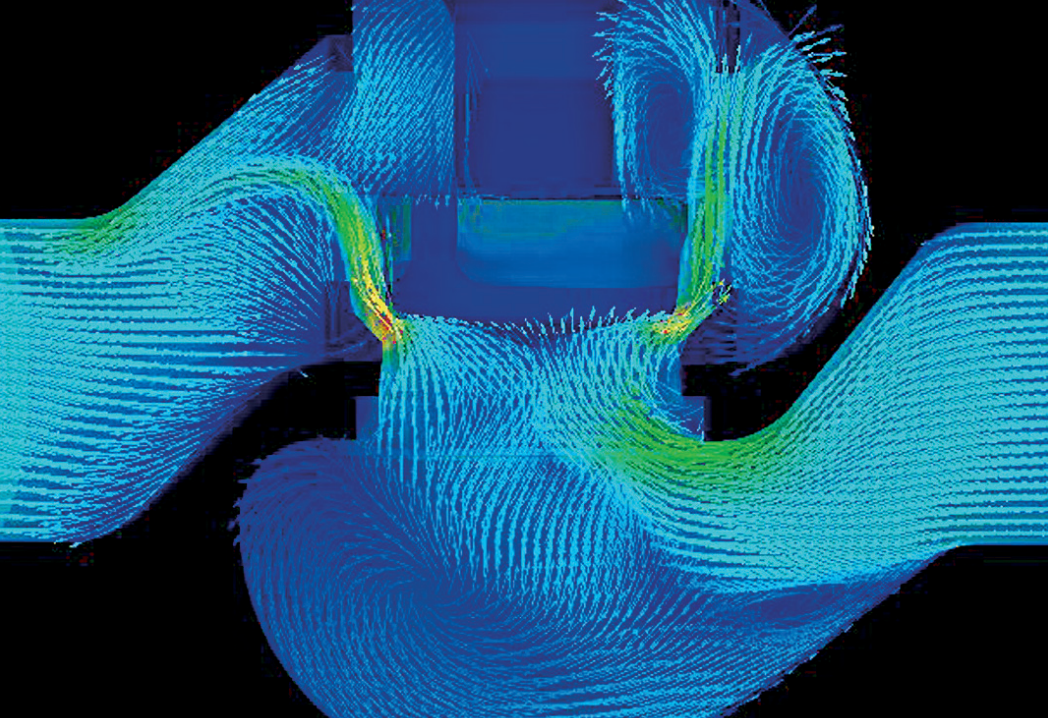
Spirax Sarco researches, designs and develops controls and instrumentation directly, often working in partnership with customers and specialist technology experts alike.

In-house 3D modelling, computational fluid dynamics, finite element analysis and rapid prototyping techniques allow for more rigorous testing, over a wider range of product combinations, than ever before. This permits much greater performance fine-tuning than previously achievable and results in a considerably lower investment risk for the user.

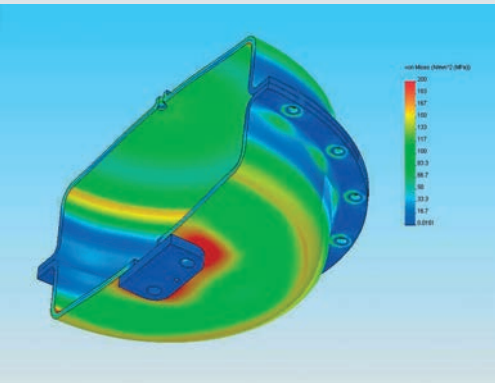
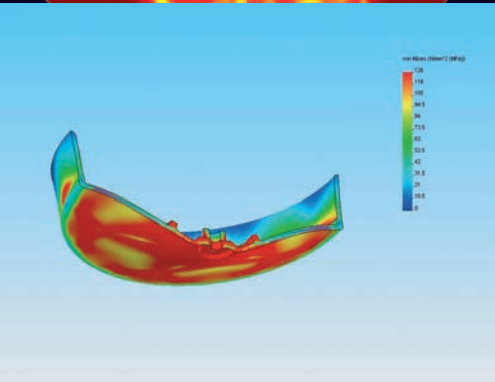
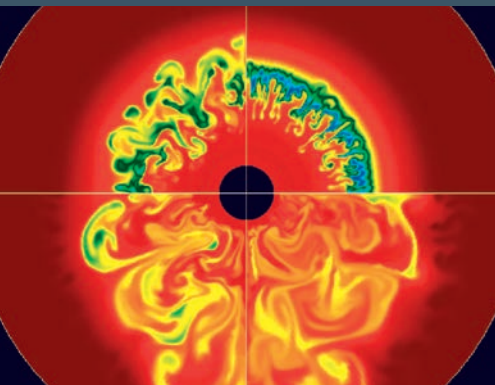
### Today's technology - Tomorrow's solutions:

- Active research and development programme.
- Works in partnership with customers and technologists.
- 3D modelling.
- Computational fluid dynamics (CFD).
- Finite element analysis (FEA).
- Rapid prototyping.
- Low investment risk for the user.

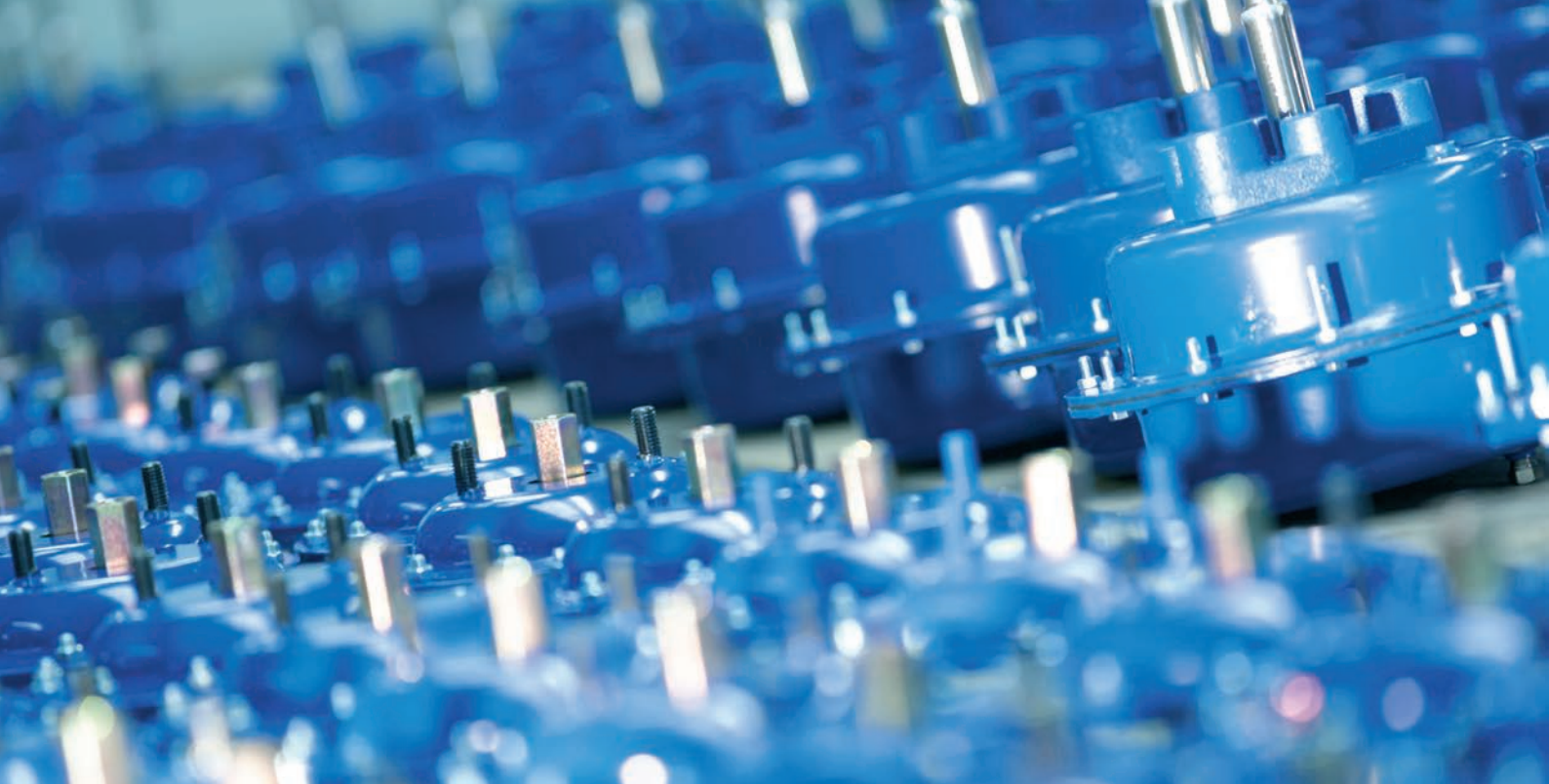




Spirax Sarco researches, designs and develops controls and instrumentation directly

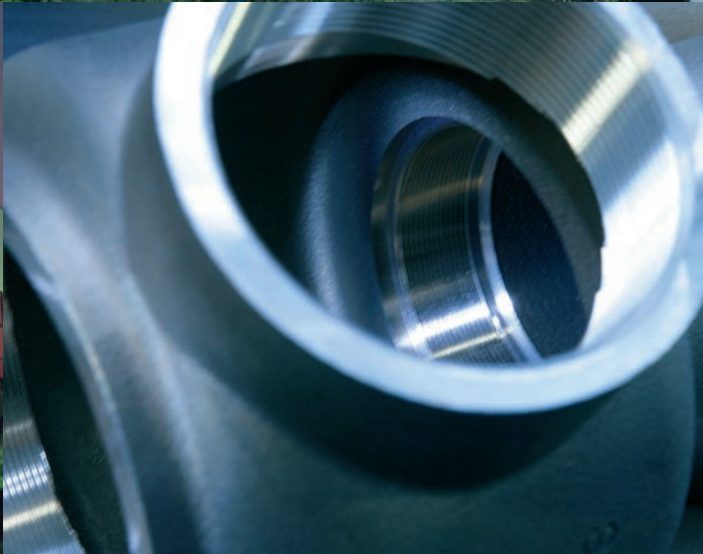






a brand you can rely on

**spirax**  
**sarco**





## Manufacturing and quality

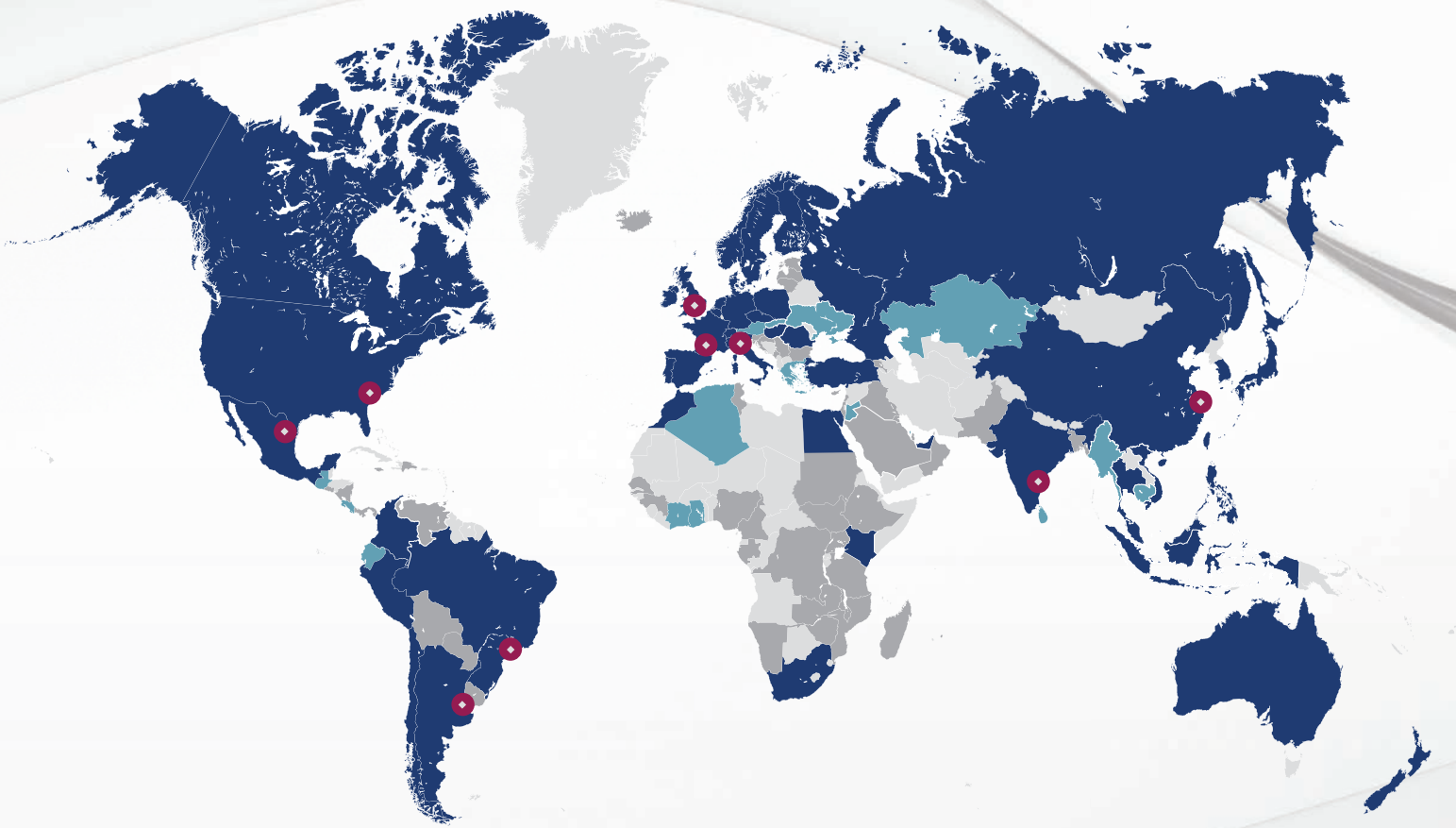
Our controls and instrumentation products are manufactured directly by Spirax Sarco in a number of strategically placed manufacturing plants around the World. These ISO 9001:2000 approved facilities employ production best practice, often achieving 'best-in-class'. This strategy of direct manufacture allows us control over the quality of product and service that we provide our customers.

Traceable materials are purchased from around the globe, to ensure that our customers always benefit from the advantage of the best technical and commercial sources.

Assembly is automated and testing is computerised. Every control device is factory set using skilled personnel to ensure a consistently high quality product.

### World class - worldwide:

- Strategically located manufacturing plants.
- ISO 9001:2000 accredited facilities.
- Global purchasing.
- Automated assembly.
- Computerised testing.
- Products configured centrally and locally by skilled personnel.
- Consistent high quality product.



**Operating Companies**

**Manufacturing Sites**

**Sales Offices**

**Distributors**



Spirax-Sarco Limited, Charlton House, Cheltenham,  
Gloucestershire, GL53 8ER, UK  
T +44 (0)1242 521361  
F +44 (0)1242 573342  
E enquiries@uk.spiraxsarco.com

