

# spirax/sarco

## Manual Loading Station Type 354 Installation and Maintenance Instructions

### INSTALLATION

Type 354 manual loading stations are provided with one pillar (11) complete with an auxiliary fixing plate (12) and one screw (18) for simple panel mounting (see part list on the back of sheet).

After installation on panel, pneumatic piping must be provided by utilizing air connections (1/4" NPT female) fitted on the back of station and identified by following letters:

**E**, air supply; **U**, output signal.

It is strongly recommended to check for perfect airtightness of connections and fittings on the signal pneumatic line, with water soap solution or special spray compounds.

**Air supply must be filtered, clean, dry and oil free, at 20 psig (1.4 bar) pressure; maximum 35 psig (2.4 bar).**

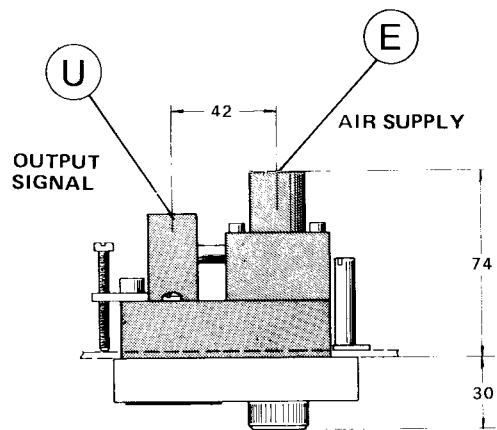
### MAINTENANCE

Type 354 loading stations do not require special maintenance.

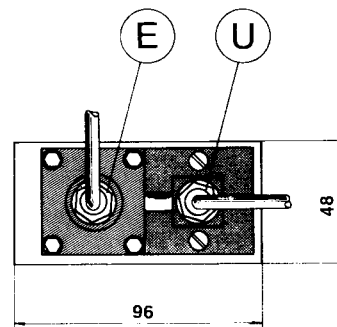
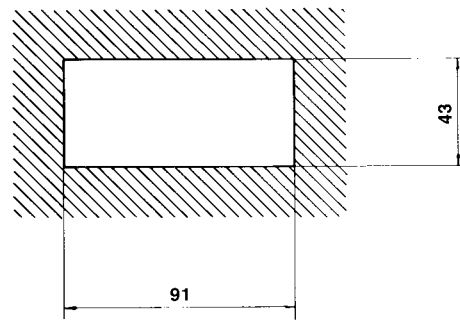
**Replacement of manometer (17)** is accomplished by unscrewing two screws (8) which fix manometer holding plate (16) and unscrewing manometer itself.

In case there is abnormal operation of pressure regulator due to air leakage with output signal constantly low, **replace diaphragm assembly (5)** as follows:

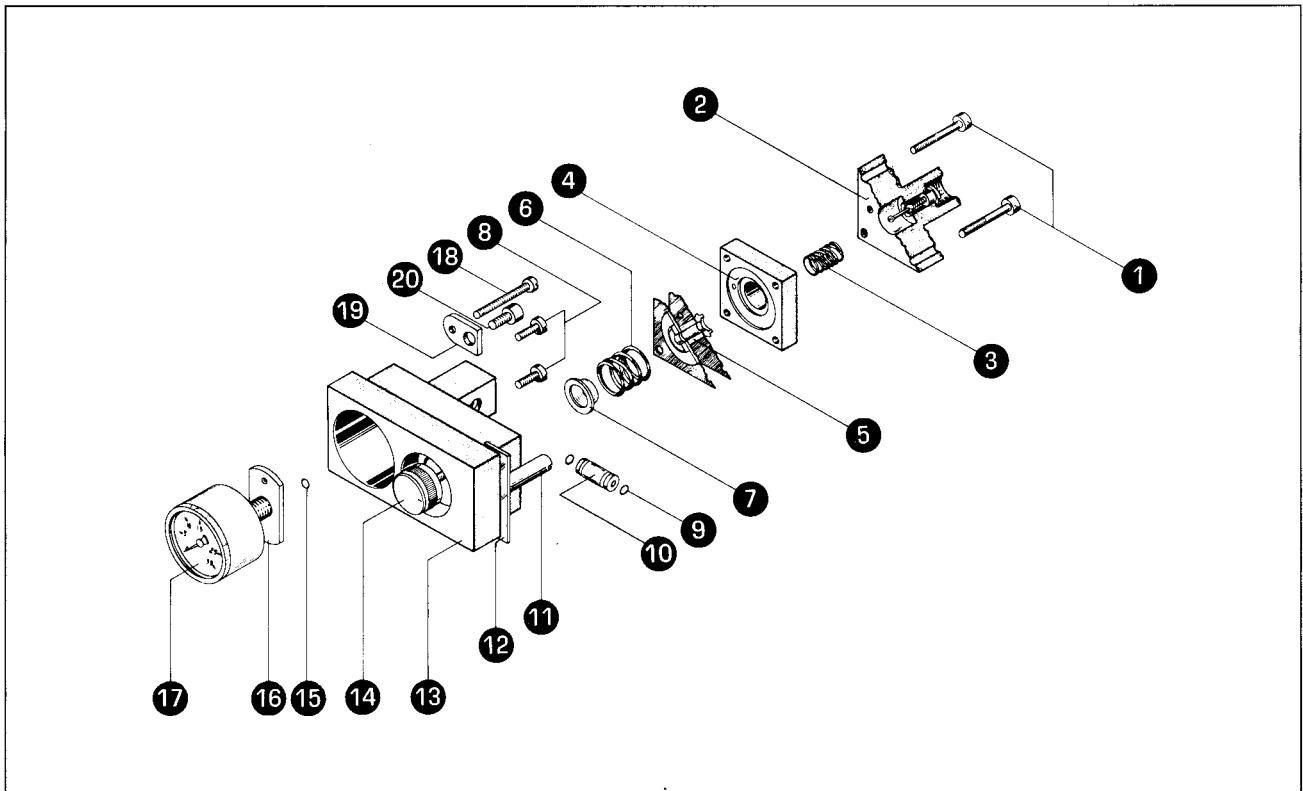
- rotate counterclockwise adjusting knob (14) up to its stop;
- loosen the four screws (1);
- disassemble plate (4) and plate (2) from base (13) without damaging connection (10);
- separate plate (2) from plate (4), remove diaphragm assembly (5) and replace it with a new one;
- reassemble now unit making sure that springs (3) and (6) are correctly positioned in their seats and that side holes of plate (4), of plate (2) and of diaphragm assembly (5) are correctly aligned with each other.



Panel cut-out



## PART LIST



1	Screw M4 x 35	8	Screw M4 x 10	15	O-ring
2	Upper plate	9	O-ring	16	Manometer holding plate
3	Valve spring	10	Air connector	17	Manometer
4	Intermediate plate	11	Mounting pillar	18	Mounting screw M5 x 40
5	Diaphragm assembly	12	Fixing plate	19	Auxiliary plate
6	Loading spring	13	Base	20	Screw M6 x 10
7	Spring guide	14	Pressure adjusting knob		

## RECOMMENDED SPARE PARTS

Description	Part list	Ordering code
Diaphragm and O-rings assembly	Part 5 - 9 - 15	3.837.4750.151
Manometer set	Part 15 - 17	3.837.4750.154

## REPAIR

Please contact our nearest Branch Office or Agent, or directly Spirax-Sarco S.r.l.  
Via Pasubio, 8 - Cernusco sul Naviglio (MI) - ITALY - Tel.: +39 02 92 11 95 11 - Fax: +39 02 924 03 21

## LOSS OF GUARANTEE

Total or partial disregard of above instructions Involves loss of any right to guarantee.