



# TD62LM and TD62M Thermodynamic Steam Traps with replaceable seats ASTM Body (Flanged connections)

## Description

The **TD62LM** and **TD62M** are maintainable high pressure thermodynamic steam traps with integral strainer and a replaceable seat to ease maintenance. They have been specifically designed for mains drainage applications up to 62 bar g.

The **TD62LM** is specifically designed for relatively small condensate loads on superheat and mains drainage applications. An insulating cover is fitted as standard to prevent the trap being unduly influenced by excessive heat loss when subjected to low ambient temperatures, wind or rain.

**Standards** - This product fully complies with the requirements of the Indian Boiler Regulations, 1950.

**Certification** - This product is available with a manufacturers' Typical Test Report and IBR certification.

**Note:** All certification/inspection requirements must be stated at the time of order placement.

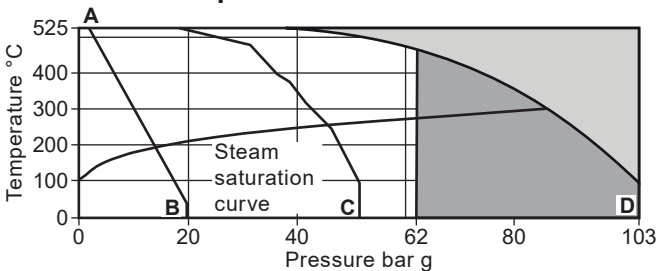
## Sizes and pipe connections

DN15, DN20 and DN25.

Standard flange to ANSI B 16.5 Class 300 and 600.

ANSI Class 150 RF connections are available to special order.

## Pressure / temperature limits



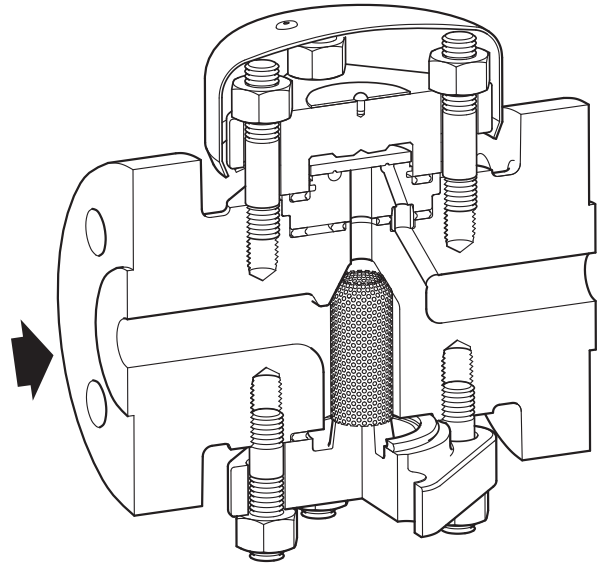
**A - B** The product **must not** be used in this region.

**C - D** The product should not be used in this region or beyond its operating range as damage to the internals may occur.

**A - B** Flanged to ANSI B 16.5 Class 150.

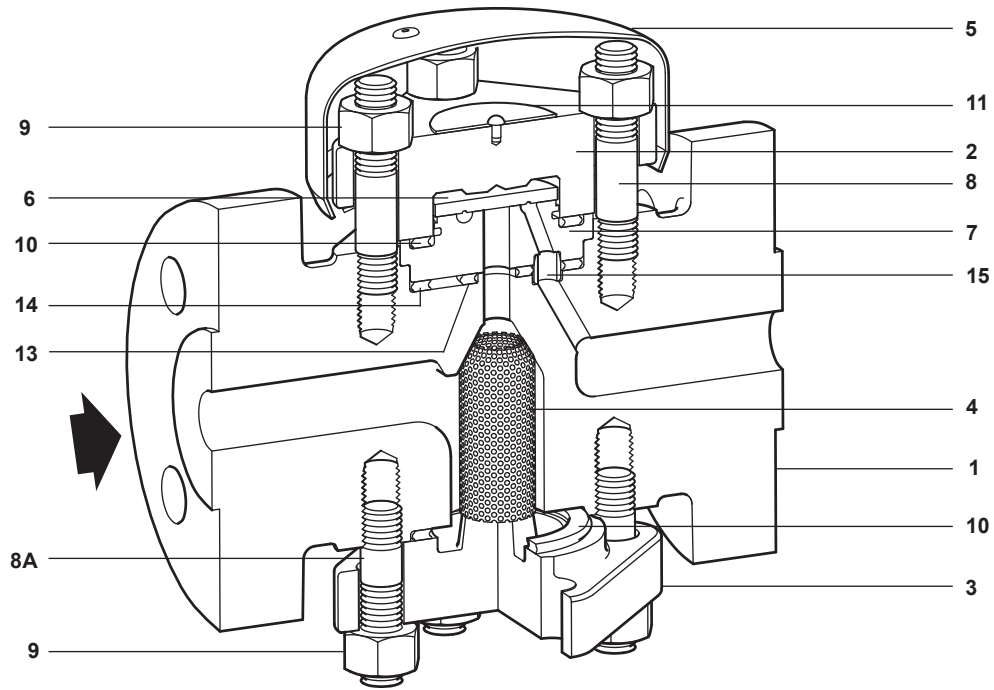
**A - C** Flanged to ANSI B 16.5 Class 300.

**A - D** Flanged to ANSI B 16.5 Class 600.



Body design conditions	ANSI Class 150	ANSI Class 300	ANSI Class 600
PMA Maximum allowable pressure	19.8 bar g @ 38 °C	51.7 bar g @ 100 °C	103 bar g @ 100 °C
TMA Maximum allowable temperature	525 °C @ 1.9 bar g	525 °C @ 20.8 bar g	525 °C @ 36 bar g
Minimum allowable temperature			0 °C
PMO Maximum operating pressure for steam service	13.9 bar g @ 195 °C	46 bar g @ 200 °C	62 bar g @ 482 °C
TMO Maximum operating temperature	525 °C @ 1.9 bar g	525 °C @ 20.8 bar g	525 °C @ 36 bar g
Hydraulic test pressure	29.7 bar g	77.6 bar g	154.5 bar g
Minimum operating temperature			0 °C
PMOB Maximum operating backpressure	<b>TD62LM</b>	50% of upstream pressure	
	<b>TD62M</b>	80% of upstream pressure	
Minimum operating pressure	<b>TD62LM</b>	8 bar g @ 175 °C	
	<b>TD62M</b>	1.4 bar g @ 126 °C	

## Materials

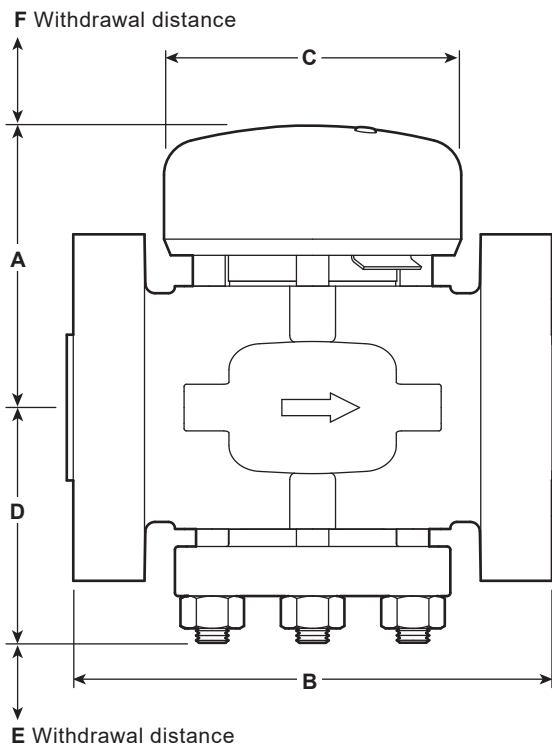


No.	Part	Material	
1	Body	Steel	ASTM A217 WC6
2	Top cover	Steel	ASTM A217 WC6
3	Bottom cover	Steel	ASTM A217 WC6
4	Strainer screen	Stainless steel 100 mesh	316L
5	Insulating cover	Aluminium	
6	Disc	Chromium steel	
7*	Seat	Chromium steel	
8	Cover studs (top)	Steel	ASTM A193 B16
8A	Cover studs (bottom)	Steel	ASTM A193 B16
9	Cover nuts	Steel	ASTM A194 8M
10	Cover gaskets	Spirally wound stainless steel with exfoliated graphite filler	
11	Name-plate	Stainless steel	
13	Inner seat gasket	Spirally wound stainless steel with exfoliated graphite filler	
14	Outer seat gasket	Spirally wound stainless steel with exfoliated graphite filler	
15*	Ferrule	Stainless steel	

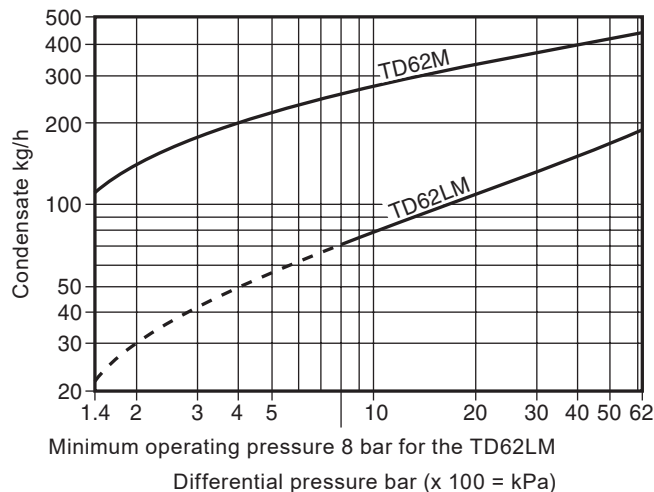
\* **Note:** Item 15 (ferrule) is pressed into item 7 (seat).

## Dimensions/weights (approximate) in mm and kg

Size	ANSI 150			ANSI 300	ANSI 600			C	D	E	F	Weight
	A	B	B	B	B	B	B					
DN15	87	128	135	147	92	72	40	30	8.5			
DN20	87	128	138	151	92	72	40	30	8.5			
DN25	87	134	147	160	92	72	40	30	9.1			



## Capacities



## Safety information, installation and maintenance

For full details see the Installation and Maintenance Instructions (IM-IBR17-61IN) supplied with the product.

### Installation note:

Preferably install in horizontal pipelines with the insulating cover uppermost although it can be fitted in other positions. After 24 hours in service the cover nuts should be checked for tightness.

### Disposal

The product is recyclable no ecological hazard is anticipated with the disposal of this product, providing due care is taken.

## How to order

**Example:** 1 off Spirax Sarco DN20 TD62LM thermodynamic steam trap with ASTM steel body having an integral strainer having a replaceable seat and flanged ANSI 600 connections suitable for steam mains drainage. An aluminium insulating cover shall be fitted as standard.

## Spare parts

The spare parts available are shown in solid outline. Parts shown in a grey line are not supplied as spares.

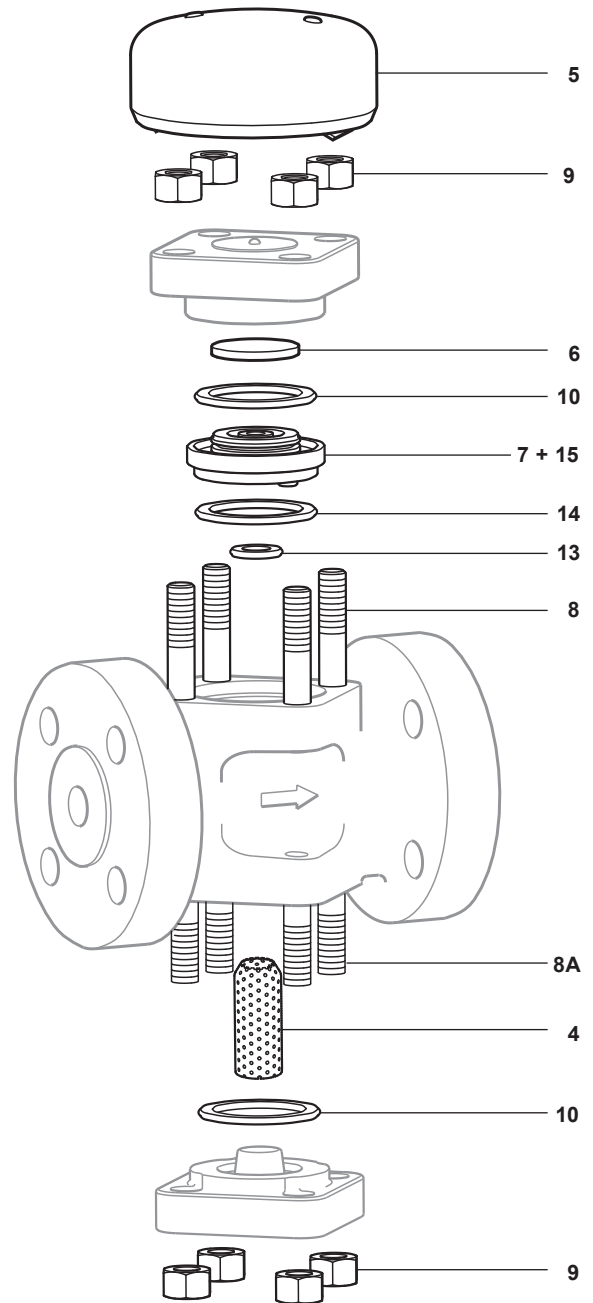
### Available spares

Insulating cover	5
Set of cover studs and nuts (set of 8)	8, 8A, 9
Seat and disc assembly	6, 7, 10, 13, 14, 15
Strainer screen 100 mesh	4
Set of gaskets (packet of 3 sets)	10, 13, 14
Cover gaskets (3 off)	10



### How to order spares

Always order spares by using the description given in the column headed 'Available spares' and state the size and type of trap.

**Example:** 1 - Strainer screen for a Spirax Sarco DN25 TD62LM thermodynamic steam trap (ASTM body).



## Recommended tightening torques

Item	 or mm		N m
8 and 8A		M10 x 1.5	20 - 25
9	17 A/F		45 - 50