



# TD42S2 Thermodynamic Steam Traps

## Description

The TD42S2 is a thermodynamic steam trap with forged steel body and socket weld ends.

A full range of lower capacity traps (½" - 1") designated TD42S2LC are available for applications such as mains drainage or tracing.

## Standards

This product fully complies with the requirements of the Indian Boiler Regulation, 1950.

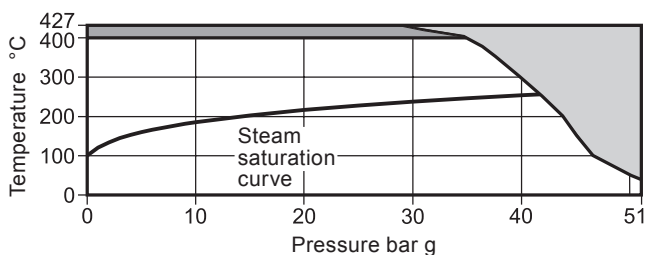
## Certification

**Note:** All certification/inspection requirements must be stated at the time of order placement.

## Optional extras

**Insulating cover:** To prevent the trap being unduly influenced by excessive heat loss such as when subjected to low outside temperatures, wind, rain etc.

## Pressure/temperature limits (ISO 6552)



The product **must not** be used in this region.

The product **should not** be used in this region.

**Note:** Upon prolonged exposure to temperatures above 425 °C (797 °F), the carbide phase of steel may be converted to graphite. Permissible but not recommended for prolonged use above 425 °C (797 °F).

## Body design conditions

PMA Maximum allowable pressure 51 bar g @ 38 °C

TMA Maximum allowable temperature 427 °C @ 28 bar g

Minimum allowable temperature 0 °C

PMO Maximum operating pressure for saturated steam service 42 bar g

TMO Maximum operating temperature 400 °C @ 34 bar g

Minimum operating temperature 0 °C

**Note:** For lower operating temperatures consult Spirax Sarco.

ΔPMX Maximum differential pressure 42 bar

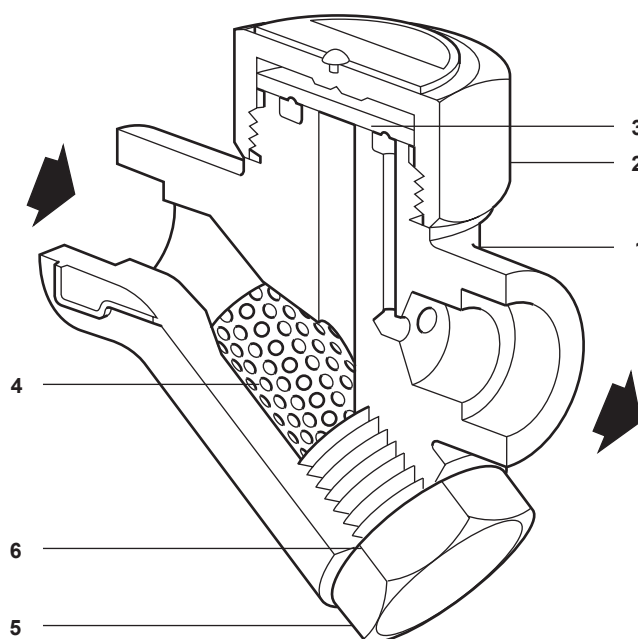
PMOB Maximum operating backpressure should not exceed 80% of the upstream pressure

Minimum operating differential pressure for satisfactory operation 0.25 bar

Designed for a maximum cold hydraulic test pressure of: 76.5 bar g

## Sizes and pipe connections

½"LC, ¾"LC, 1"LC, ½", ¾" and 1" socket weld ends to:  
 ASME (ANSI) B 16.11 Schedule 80 / BS 3799 Class 3000 lb.

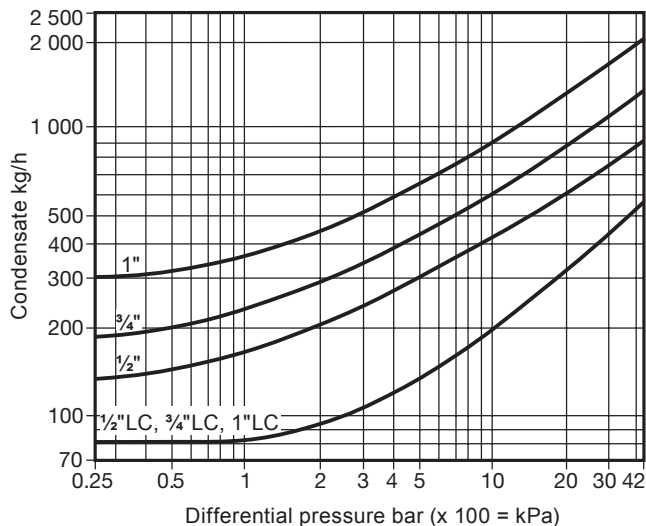


## Materials

No.	Part	Material	
1	Body	Steel	ASTM A105N
2	Cap	Stainless steel	AISI 416
3	Disc	Stainless steel	BS 1449 420 S45
4	Strainer screen	Stainless steel	AISI 316L
5	Strainer cap	Steel	ASTM A105N
6	Strainer cap gasket	Stainless steel	BS 1449 304 S16
* 7	Insulating cover (optional extra)	Aluminium	

\* **Note:** Item 7 is shown on the spares illustration overleaf.

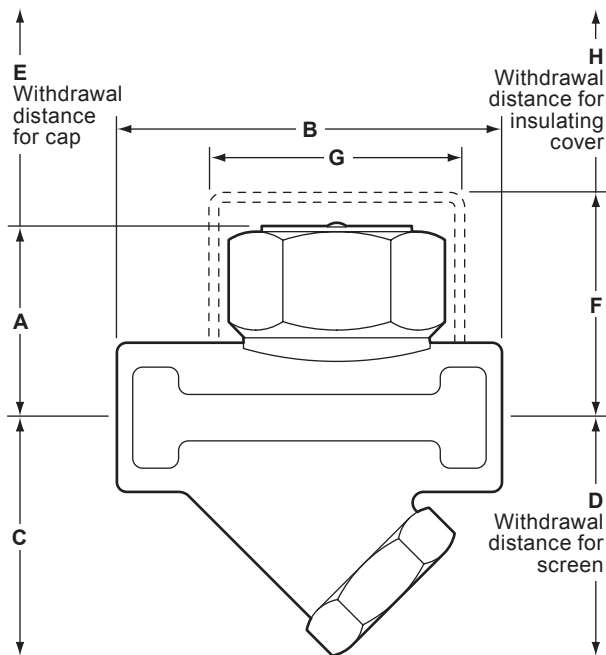
## Capacities



When sizing the TD42S2 it is important to ensure that the correct model is selected. This will ensure the required operation and maximum life. For mains drainage and tracing applications the LC version should be selected irrespective of pipe size.

## Dimensions/weights (approximate) in mm and kg

Size	A	B	C	D	E	F	G	H	Weight
1/2"	41	76	46	71	20	57	57	38	0.80
1/2" LC	40	76	46	71	20	57	57	38	0.75
3/4"	47	78	47	72	20	63	57	38	1.00
3/4" LC	44	78	47	72	20	57	57	38	1.00
1"	53	92	52	77	25	63	70	38	1.50
1" LC	48	92	52	77	20	60	57	38	1.50



## Safety information, installation and maintenance

For full details see the Installation and Maintenance Instructions (IM-IBR16-30IN) supplied with the product.

### Installation note

The TD42S2 should be installed preferably in the horizontal position. However it can also be installed and operate in other orientations.

### Disposal

This product is recyclable. No ecological hazard is anticipated with the disposal of this product providing due care is taken.

## How to order

**Example:** 1 off Spirax Sarco 1/2" TD42S2LC thermodynamic steam trap fitted with an insulating cover for outside weather protection and having socket weld end connections.

## Spare parts

The spare parts available are shown in solid outline. Parts drawn in broken line are not supplied as spares.

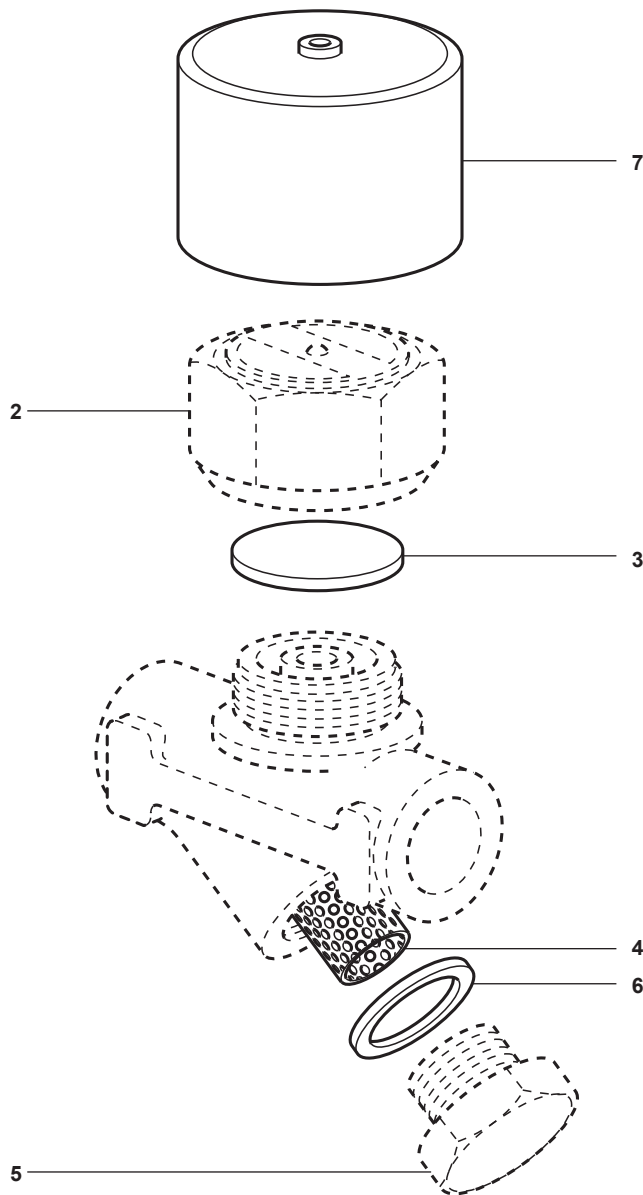
### Available spares

Disc	(packet of 3)	3
Strainer screen and gasket		4, 6
Strainer cap gasket	(packet of 3)	6
Insulating cover		7

### How to order spares

Always order spares by using the description given in the column headed 'Available spares' and state the size and type of trap.

**Example:** 1 off Strainer screen and gasket for a Spirax Sarco 1/2" TD42S2 thermodynamic steam trap.



## Recommended tightening torques

Item	or mm	N m
1/2" LC	36 A/F	87 - 97
3/4" LC	36 A/F	87 - 97
1" LC	36 A/F	87 - 97
2	1/2"	41 A/F
	3/4"	41 A/F
	1"	55 A/F
5 (all sizes)	27 A/F M24	120 - 135