



Thermocirc Steam/Water Mixing Valve

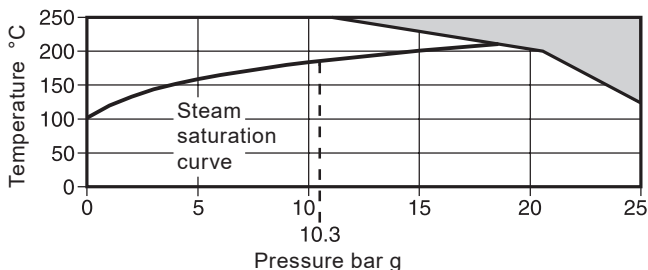
Description

The thermocirc steam/water mixing valve provides hot water by blending steam and cold water. The temperature is controlled by a thermostatic element. The set temperature can be set by turning the adjustment nut.

Sizes and pipe connections

½" screwed BSP to (BS 21) or NPT.

Pressure/temperature limits



The product **must not** be used in this region.

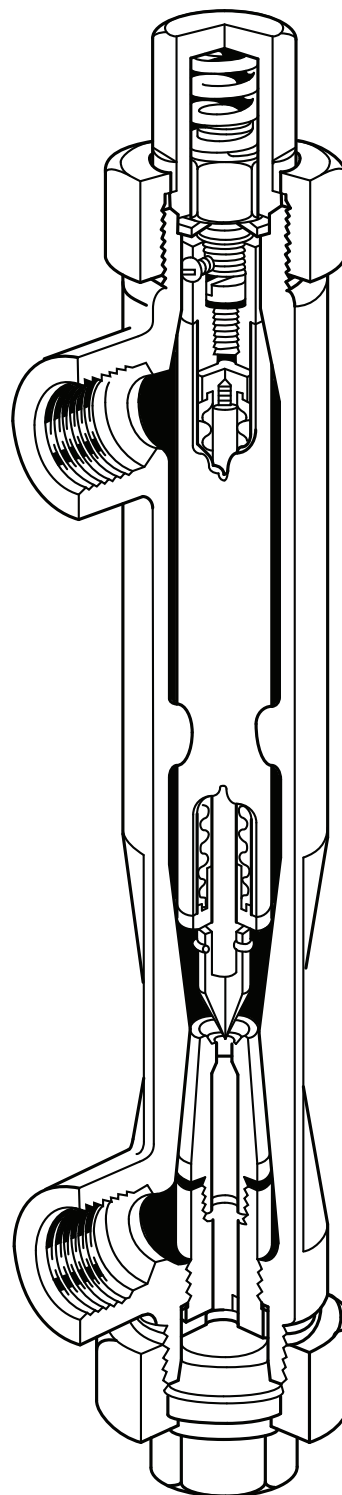
* PMO Maximum operating pressure when used for steam service.

Body design conditions	PN25
PMA Maximum allowable pressure	25 bar g
TMA Maximum allowable temperature	260 °C
PMO Maximum operating pressure	10.3 bar g
TMO Maximum operating temperature	250 °C
Temperature range	49 °C to 82 °C
Designed for a maximum cold hydraulic test pressure of:	38 bar g

Certification

The product is available with certification to EN 10204 2.2 for the body and nut.

Note: All certification/inspection requirements must be stated at the time of order placement.

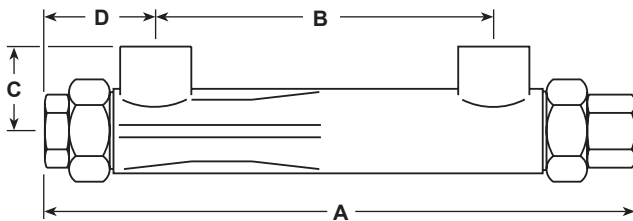


Materials

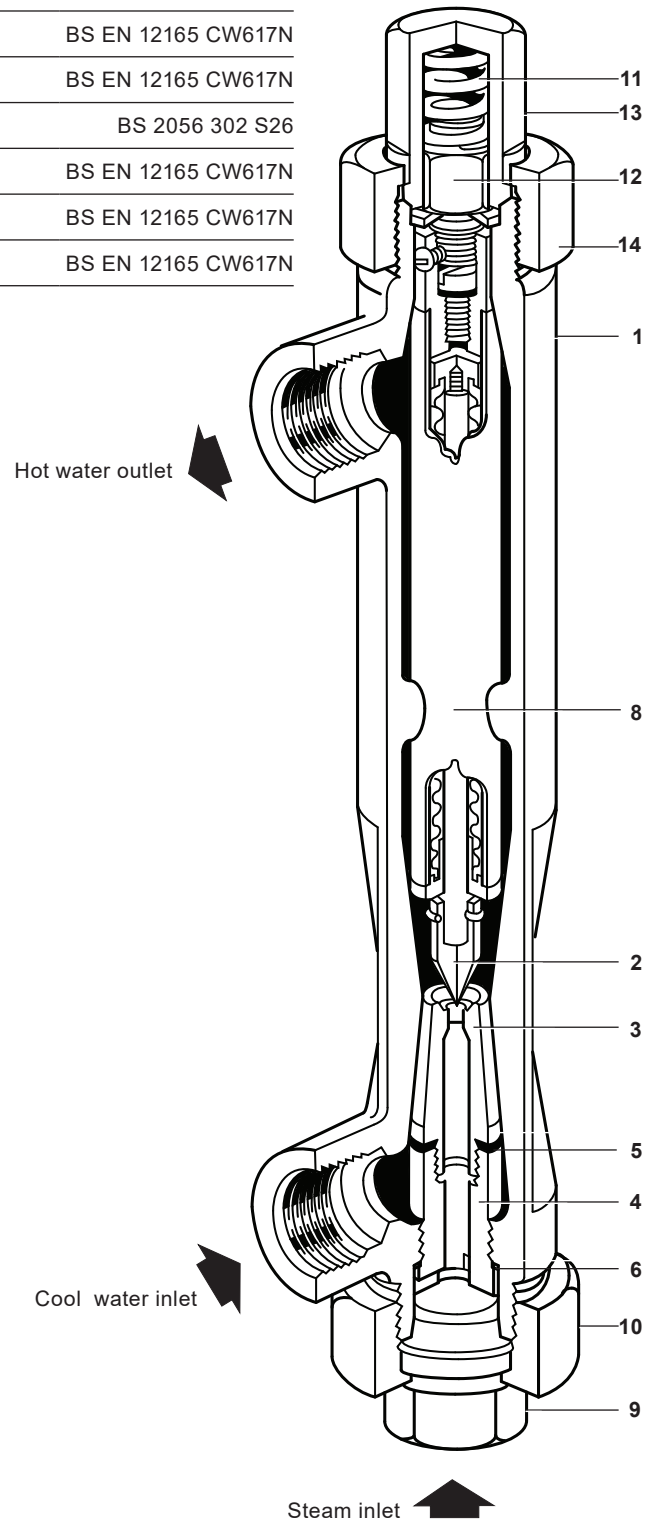
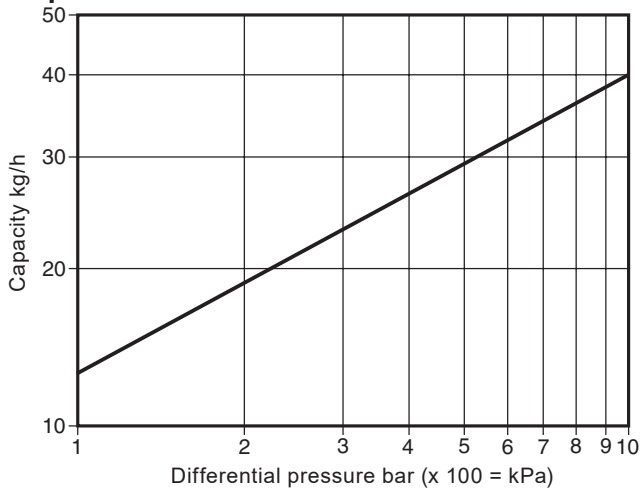
No.	Part	Material	
1	Body	Copper alloy (LG2)	BS EN 1982 CC491K
2	Valve closure member	Stainless steel	BS 970 431 S29
3	Valve seat ring	Stainless steel	BS 970 431 S29
4	Seat holder	Brass	BS 2874 CZ121
5	Seat gasket	Copper	BS 2870 C102
6	Seat holder gasket	Copper	BS 2870 C102
8	Element	Brass and phosphor bronze	BS 2870 CZ108 BS 2870 PB102
9	Nipple	Brass	BS EN 12165 CW617N
10	Nut	Brass	BS EN 12165 CW617N
11	Spring	Stainless steel	BS 2056 302 S26
12	Element nut	Brass	BS EN 12165 CW617N
13	Adjustment nut	Brass	BS EN 12165 CW617N
14	Lock-nut	Brass	BS EN 12165 CW617N

Dimensions/weight (approximate) in mm and kg

Size	A	B	C	D	Weight
½"	270	152	40	50	1.5



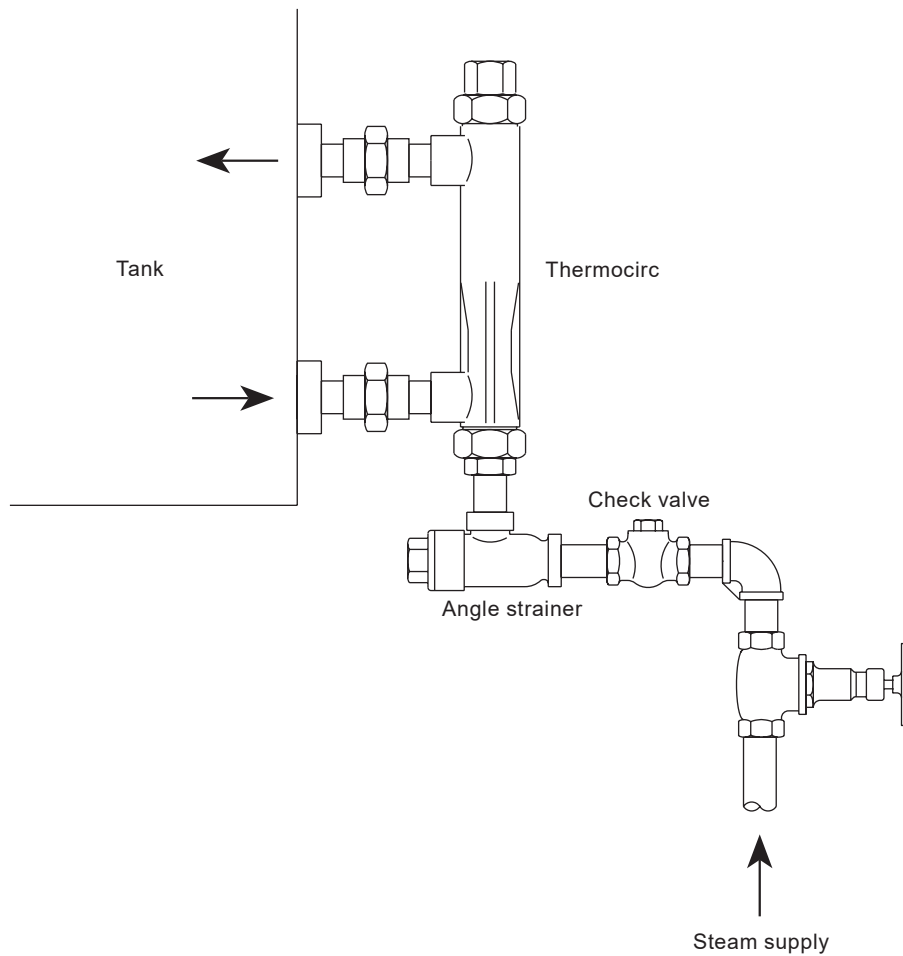
Capacities



Safety information, installation and maintenance

For full details see the Installation and Maintenance Instructions (IM-P157-36) supplied with the product.

Note: A strainer and check valve should always be fitted in the steam inlet pipework prior to entry into the thermocirc as shown below.



Typical installation showing a thermocirc fitted directly to a small hot water tank.

Disposal

The product is recyclable. No ecological hazard is anticipated with the disposal of this product, providing due care is taken, with exception to the element (8) which should be disposed of separately as it contains a parafin fill.

How to order

Example: 1 off ½" Spirax Sarco thermocirc with copper alloy (LG2) body and screwed BSP connections.

Spare parts

The spare parts available are shown in heavy outline.
Parts drawn in a grey line are not supplied as spares.

Available spare

Element set

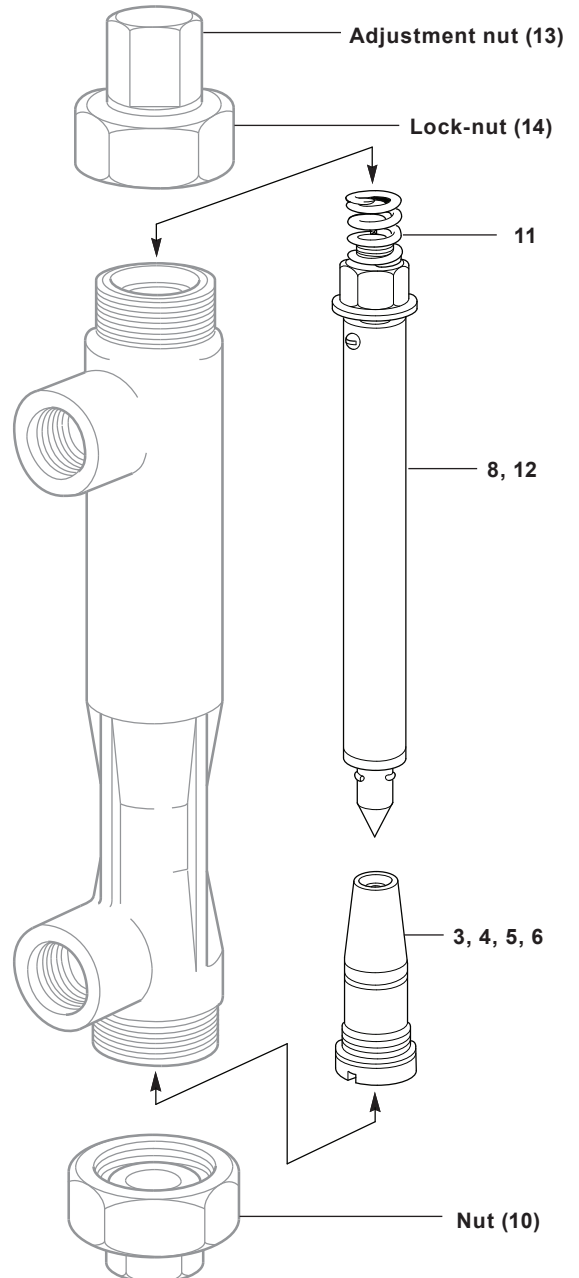
3, 4, 5, 6, 8, 11, 12

How to order spares



Always order spares by using the description given in the column headed 'Available spare' and state the size and type of control.
Example: 1 - Element set for a 1/2" Spirax Sarco thermocirc.

How to fit spares

See the Installation and Maintenance Instructions (IM-P157-36) supplied with each thermocirc.



Recommended tightening torques

Item	 or mm		N m
3			30 - 35
10	1 ¹⁵ / ₃₂ " A/F		80 - 85
14	1 ¹⁵ / ₃₂ " A/F		80 - 85