



TD62LM & TD62M Thermodynamic Steam Traps with replaceable seats ASTM Body (Flanged connections)

Description

The **TD62LM** and **TD62M** are maintainable high pressure thermodynamic steam traps with integral strainer and a replaceable seat to ease maintenance. They have been specifically designed for mains drainage applications up to 62 bar g.

The **TD62LM** is specifically designed for relatively small condensate loads on superheat and mains drainage applications. An insulating cover is fitted as standard to prevent the trap being unduly influenced by excessive heat loss when subjected to low ambient temperatures, wind or rain.

The body and cover meet typical industry standards including Charpy impact testing of 27J @-30 °C. available with certification to EN 10204 3.1.

Standards

This product fully complies with the requirements of the European Pressure Equipment Directive 2014/68/EU.

Certification

This product is available with certification to EN 10204 3.1.

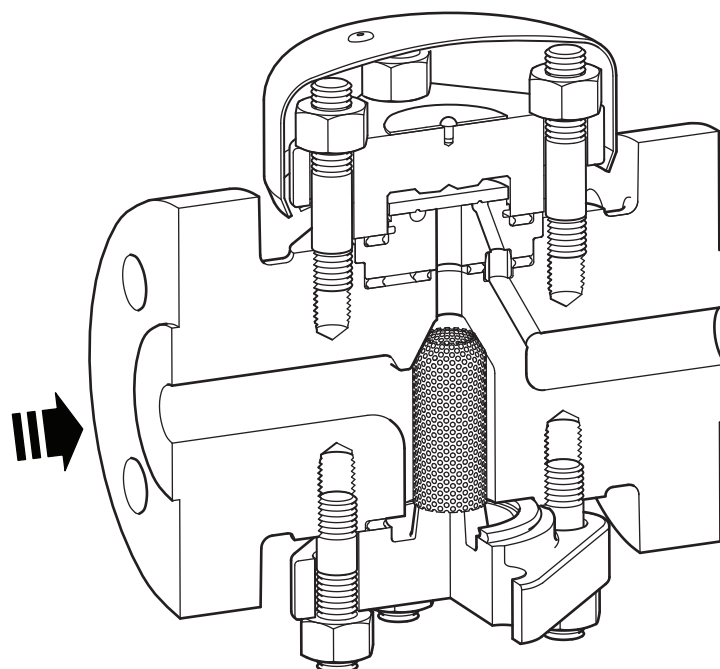
Note: All certification/inspection requirements must be stated at the time of order placement.

Sizes and pipe connections

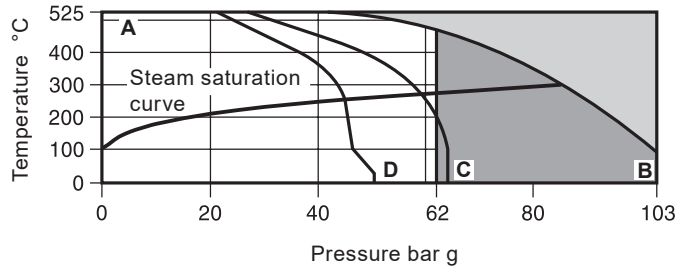
DN15, DN20 and DN25


Standard flange to ANSI B 16.5 Class 300 and 600, and JIS/KS 40K.

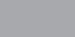
ANSI Class 150 RF connections are available to special order.



Pressure/temperature limits



 The product **must not** be used in this region.

 The product should not be used in this region or beyond its operating range as damage to the internals may occur.

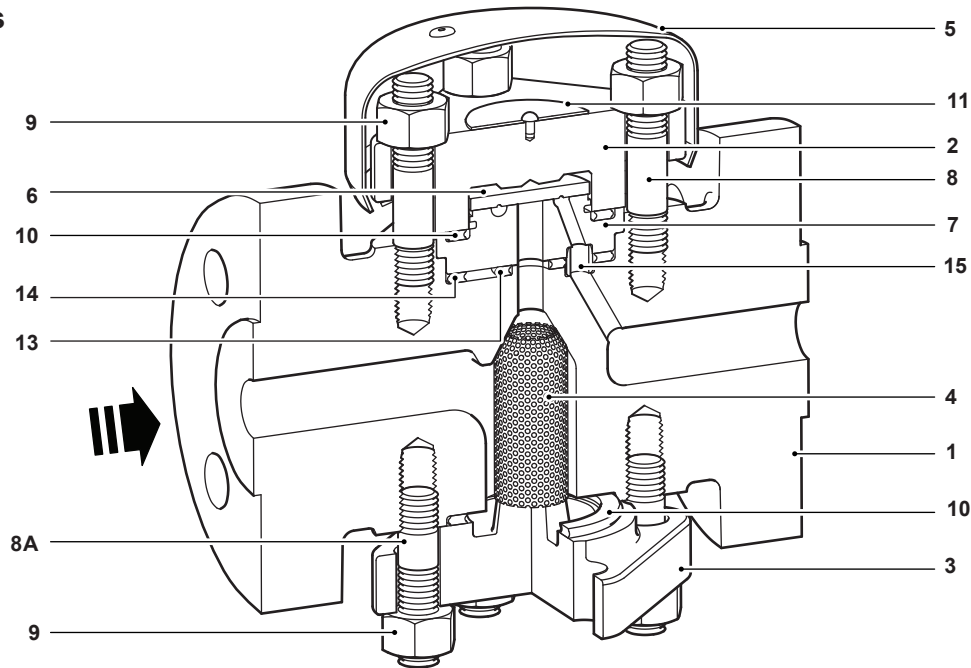
A - B Flanged to ANSI B 16.5 Class 600.

A - C Flanged to JIS/KS 40K.

A - D Flanged to ANSI B 16.5 Class 300.

Body design conditions		ANSI 600	
PMA	Maximum allowable pressure	103 bar g @ 93 °C	
TMA	Maximum allowable temperature	525 °C @ 42.7 bar g	
Minimum ambient temperature		-30 °C	
PMO	Maximum operating pressure for steam service	62 bar g @ 482 °C	
TMO	Maximum operating temperature	525 °C @ 42.7 bar g	
Minimum operating temperature		0 °C	
PMOB	Maximum operating backpressure	TD62LM	50% of upstream pressure
		TD62M	80% of upstream pressure
Minimum operating pressure	TD62LM	8 bar g	
	TD62M	1.4 bar g	
Product is safe for use under full vacuum conditions			
Designed for a maximum cold hydraulic test pressure of		155 bar g	

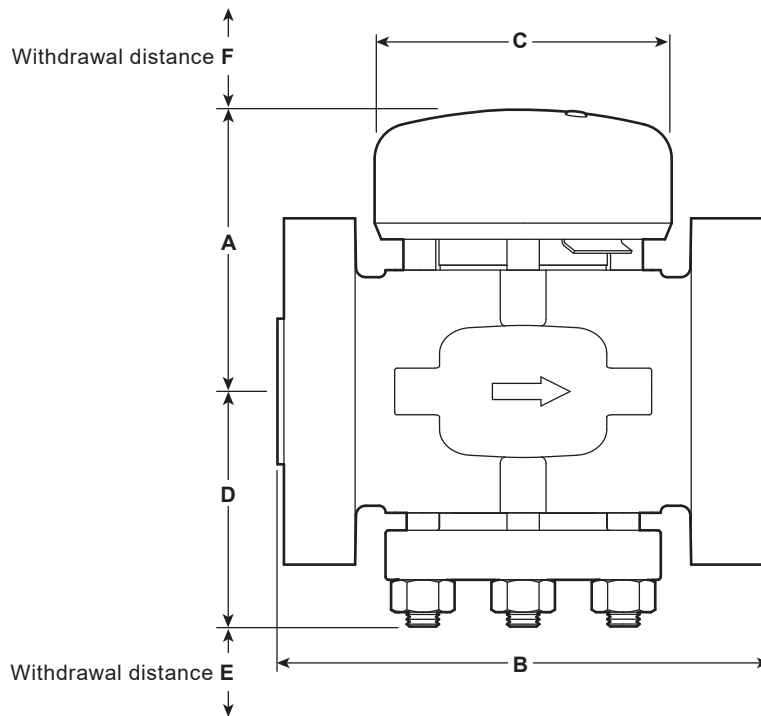
Materials



No.	Part	Material	
1	Body	Steel	ASTM A217 WC6
2	Top cover	Steel	ASTM A217 WC6
3	Bottom cover	Steel	ASTM A217 WC6
4	Strainer screen	Stainless steel 100 mesh	316L
5	Insulating cover	Aluminium	
6	Disc	Chromium steel	
7 *	Seat	Chromium steel	
8	Cover studs (top)	Steel	ASTM A193 B16
8A	Cover studs (bottom)	Steel	ASTM A193 B16
9	Cover nuts	Steel	ASTM A194 8M
10	Cover gaskets	Spirally wound stainless steel with exfoliated graphite filler	
11	Name-plate	Stainless steel	
13	Inner seat gasket	Spirally wound stainless steel with exfoliated graphite filler	
14	Outer seat gasket	Spirally wound stainless steel with exfoliated graphite filler	
15 *	Ferrule	Stainless steel	

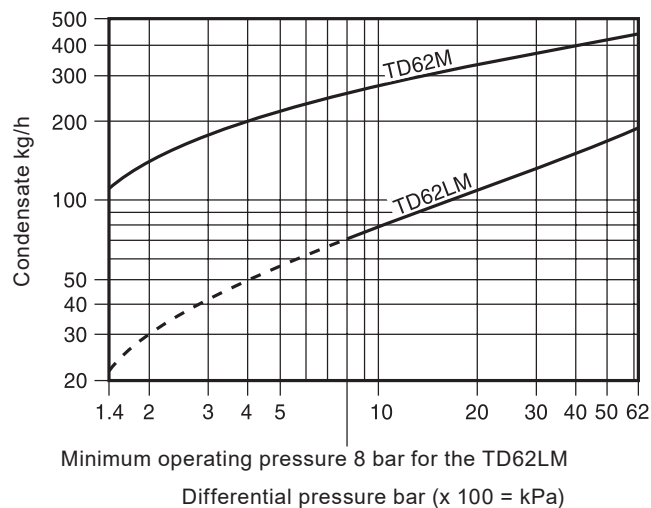
Note: Item 15 (ferrule) is pressed into item 7 (seat).

Dimensions/weights (approximate) in mm and kg



Size	A	ANSI 600 B	ANSI 300 B	JIS/KS 40K B	C	D	E	F	Weight
DN15	87	147	135	146	92	72	40	30	8.5
DN20	87	151	138	146	92	72	40	30	8.5
DN25	87	160	147	156	92	72	40	30	9.1

Capacities



Safety information, installation and maintenance

For full details see the Installation and Maintenance Instructions (IM-P068-58) supplied with the product.

Installation note:

Preferably install in horizontal pipelines with the insulating cover uppermost although it can be fitted in other positions. After 24 hours in service the cover nuts should be checked for tightness.

Disposal

The product is recyclable no ecological hazard is anticipated with the disposal of this product, providing due care is taken.

How to order

Example: 1 off Spirax Sarco DN20 TD62LM thermodynamic steam trap with ASTM steel body having an integral strainer having a replaceable seat and flanged ANSI 600 connections suitable for steam mains drainage. An aluminium insulating cover shall be fitted as standard.

Spare parts

The spare parts available are shown in solid outline. Parts shown in a grey line are not supplied as spares.

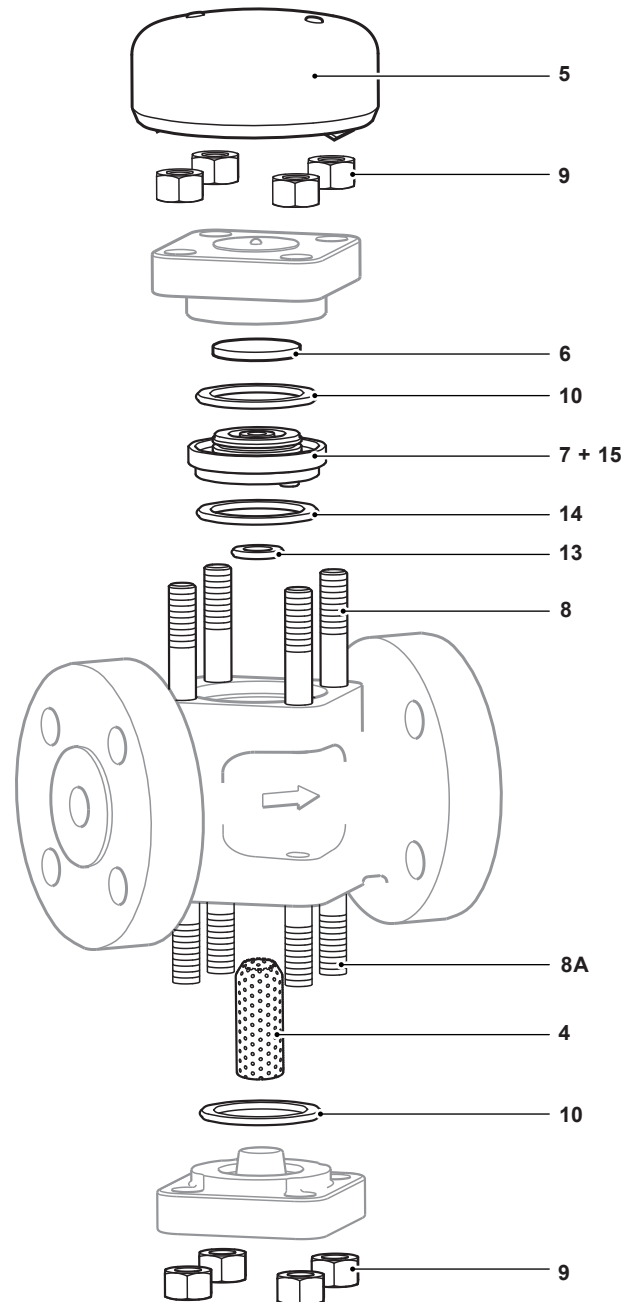
Available spares

Insulating cover	5
Set of cover studs and nuts (set of 8)	8, 8A, 9
Seat and disc assembly	6, 7, 10, 13, 14, 15
Strainer screen 100 mesh	4
Set of gaskets (packet of 3 sets)	10, 13, 14
Cover gasket (3 off)	10



How to order spares

Always order spares by using the description given in the column headed 'Available spares' and state the size and type of trap.

Example: 1 - Strainer screen for a Spirax Sarco DN25 TD62LM thermodynamic steam trap (ASTM body).



Recommended tightening torques

Item	 or  mm	N m
8 and 8A	M10 x 1.5	20 - 25
9	17 A/F	45 - 50