



Cert. No. LRQ 0963008

ISO 9001

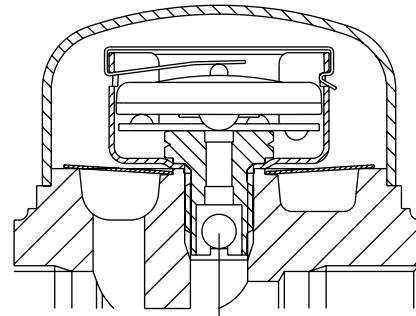
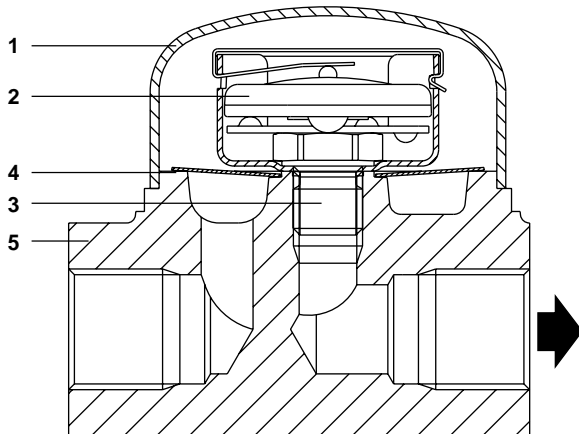
spirax sarco

TI-P120-01
ST Issue 6

SBP30

Sealed Balanced Pressure Thermostatic Steam Trap

SBP30



check valve

SBP30LCV
SBP30HCV

Description

The SBP30 is a sealed balanced pressure stainless steel steam trap with straight connections. It is unaffected by waterhammer and is available as follows:-

Standard unit	SBP30 ,	low capacity without check valve with 'STD' fill capsule
	SBP30LCV ,	low capacity with check valve
Also available	SBP30H ,	high capacity without check valve
	SBP30HCV ,	high capacity with check valve

Note: When placing an order always state capsule fill.

Capsule fill and operation

As standard the trap is supplied with a 'STD' type filling for operation at approximately 12°C below steam saturation temperature.

Optionally, the trap can be supplied for sub-cooled 'SUB' operation at approximately 24°C below steam saturation temperature.

Sizes and pipe connections

½" and ¾" Screwed BSP or NPT.
½" and ¾" Socket weld ends to BS 3799/ANSI B16.11 Schedule 80, DN15 and DN20 standard flange ANSI B16.5 Class 150 and ANSI 300, BS 4504 and DIN PN40, PN25 and PN16

Limiting conditions (ISO 6552)

Maximum design conditions	ANSI 300
PMO - Maximum operating pressure	30 bar g
TMO - Maximum operating temperature	285°C
PMA - Maximum allowable pressure	50 bar g
TMA - Maximum allowable temperature	400°C
Cold hydraulic test pressure	75 bar g

Standards

The cover (and flanges when specified) is welded to the body using the TIG process. Welds are approved in accordance with ASME Section IX and BS EN 288.

Materials

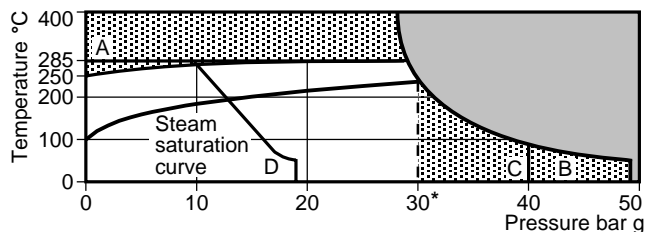
No	Part	Material	
1	Cover	Stainless steel	ASTM A240 Gr. 304
2	Capsule	Stainless steel	
3	Valve seat	Stainless steel	AISI 431
4	Strainer screen	Stainless steel	AISI 304
	Body	Stainless steel	ASTM A314 Gr. 304
5	Flanges PN40	Carbon steel	DIN 17100 ST 37/2
	Flanges ANSI	Carbon steel	ASTM A105N
	Stub ends	Schedule 40 pipe to	ASTM A106 Grade B

Note: Carbon steel flanges are supplied as standard. Stainless steel flanges can be supplied as an option.

Certification

The product is available with material certification to EN 10204 3.1.B for body and cover as standard. All certification must be requested at the time of order placement.

Operating range

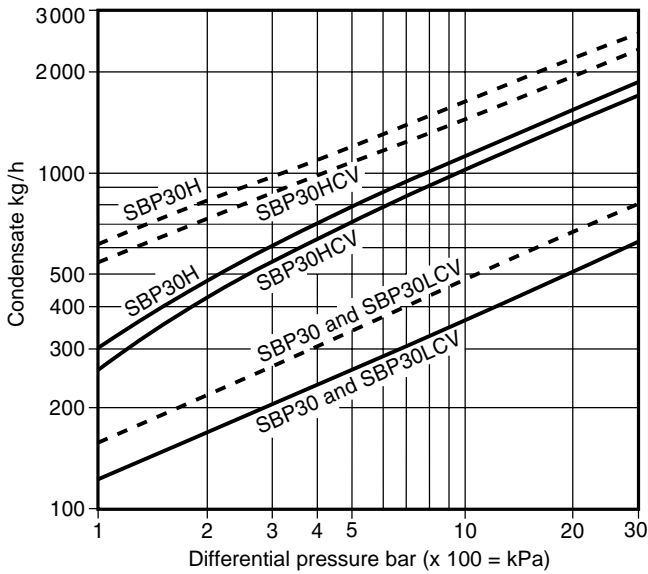


■ The product must not be used in this region.
▨ The product should not be used in this region or beyond its operating range as damage to the internals may occur.

*PMO Maximum operating pressure 30 bar g.

A - B Screwed, socket weld and flanged ANSI 300.
A - C Flanged BS 4504 PN40.
A - D Flanged ANSI 150.

Capacities



Hot water capacity ——— Cold water capacity - - - - -

Safety information

Pressure

Before attempting any maintenance of the steam trap, consider what is or may have been in the pipeline. Ensure that any pressure is isolated and safely vented to atmospheric pressure before attempting to maintain the steam trap. This is easily achieved by fitting Spirax Sarco depressurisation valves type DV (see separate literature for details). Do not assume that the system is depressurised even when a pressure gauge indicates zero.

Temperature

Allow time for temperature to normalise after isolation to avoid the danger of burns and consider whether protective clothing (including safety glasses) is required.

Installation

The trap is designed for installation with the capsule in a horizontal plane and the cover at the top, preferably with a drop leg immediately preceding the trap. When welding the trap into the pipeline, there is no need to remove the capsule, providing the welding is done by the electric arc method. Suitable isolation valves must be installed to allow for safe maintenance and trap replacement. Remove all protective caps prior to installation. Open isolation valves slowly until normal operating conditions are achieved. Check for leaks and correct operation.

Maintenance

Maintenance can be initiated once the safety procedures have been observed. It is important to renew the complete assembly as there are no servicable parts. When maintenance is complete, open isolation valves slowly and check for leaks.

Disposal

This product is recyclable. No ecological hazard is anticipated with the disposal of this product, providing due care is taken.

How to order

Example: 1 off 1/2" Spirax Sarco SBP30 sealed balanced pressure steam trap. Screwed BSP with 'STD' fill capsule for operation at approximately 12°C below steam saturation temperature.

Dimensions / weights (approximate) in mm and kg

Size	A	A1	B	C	D	Weight	
						Scr /SW	Flg
1/2" - DN15	80	150	63	56	19	1.0	2.4
3/4" - DN20	80	150	63	56	19	1.0	2.4

