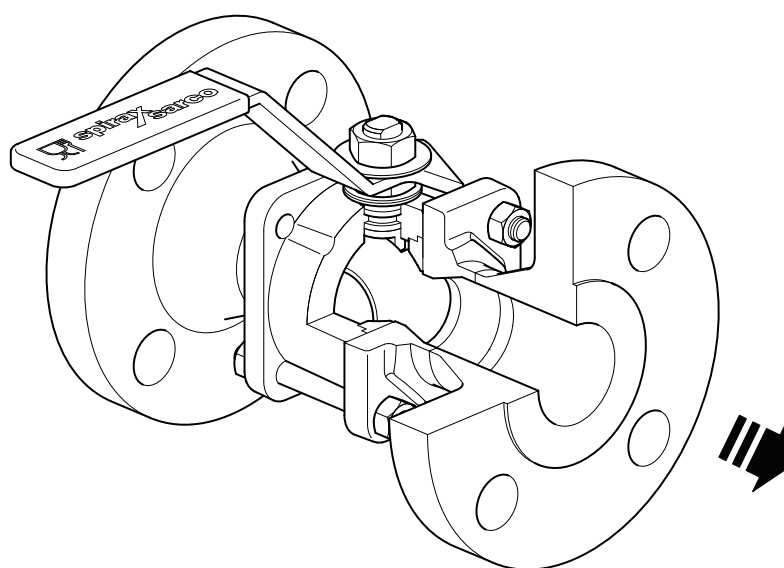




M10 ECF4 and M10 ECF4 Food+ Ball Valve 1/4" to 2 1/2"

Description


The M10 ECF4 three-piece body ball valve has been designed for use as an isolating valve, not a control valve, and can be serviced without removal from the pipeline (screwed and welded versions only). It was designed and manufactured specially for Steam and Condensate applications. The valve complies with Regulation EC 1935/2004 on Food Contact Materials and Regulation EC 2023/2006 on Good Manufacturing Practice for food-contact materials. The product also meets the requirements of EU 10/2011 for plastic materials intended to come into contact with food



Nomenclature

After the name M10 ECF4, the nomenclature will be followed with either FB (full bore) or RB (reduced bore).

Standards

This product complies with the requirements of the EU Pressure Equipment Directive 2014/68/EU/UK Pressure Equipment (Safety) Regulations and carries the  mark when so required.

Certification

This product comes as standard with a certification package, which contains the following certificates:

- EN 10204 3.1 material certificates for all wetted parts (including seats and seals)
- EC1935:2004 Declaration of Compliance
- EC2023:2006 Declaration of Compliance
- EU 10/2011 Declaration of Compliance
- TSE-BSE Statement
- Typical Test Report

The material for the seals is compliant with:

- FDA CFR Title 21. Paragraph 177. 1550.

Note: All the valves are marked with a serial number and carry a certification pack with the same serial number in it.

Packaging

Each valve is end capped and sealed in a plastic bag to avoid the ingress of dirt and other contaminants and packed in a cardboard box.

Technical data

Flow characteristic Modified linear

Port Full and reduced bore versions

Leakage test procedure to ISO 5208 (Rate A)/EN 12266-1 (Rate A)

Sizes and pipe connections

Full bore

¼", ⅜", ½", ¾", 1", 1¼", 1½" and 2"

Screwed and welded

BSP (BS21 Rp), BSP (ISO 228 G), BSPT, NPT, BW, SW

Flanged

DN15 to DN50

ASME Class 150, ASME Class 300, and EN 1092 PN40.

Reduced bore

½", ¾", 1", 1¼", 1½", 2" and 2½"

Screwed and welded

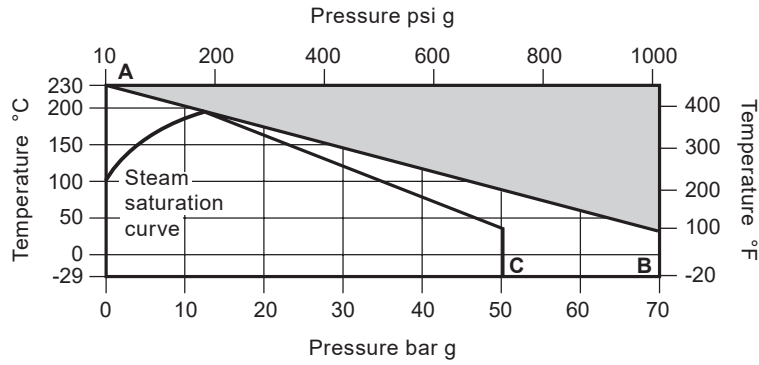
BSP (BS21 Rp), BSP (ISO 228 G), BSPT, NPT, BW, SW

Flanged

DN15 to DN65

ASME Class 150, ASME Class 300, and EN 1092 PN40.

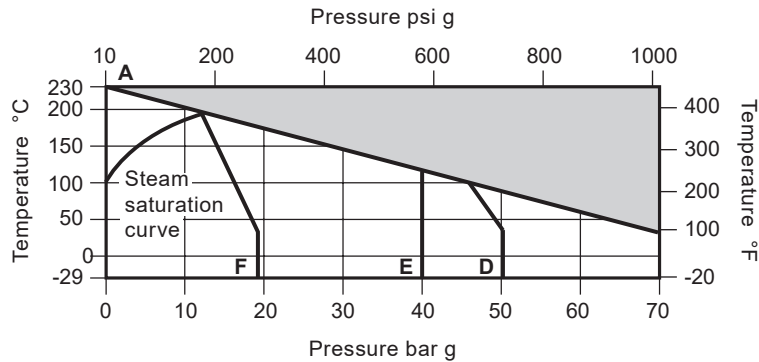
Pressure/temperature limits



The product **must not** be used in this region.

A - B Screwed, BW and SW ¼" - 1½" FB and ¼" - 2" RB.

A - C Screwed, BW and SW 2" FB and 2½" RB only.



A - D Flanged ASME 300.

A - E Flanged EN 1092 PN40.

A - F Flanged ASME 150.

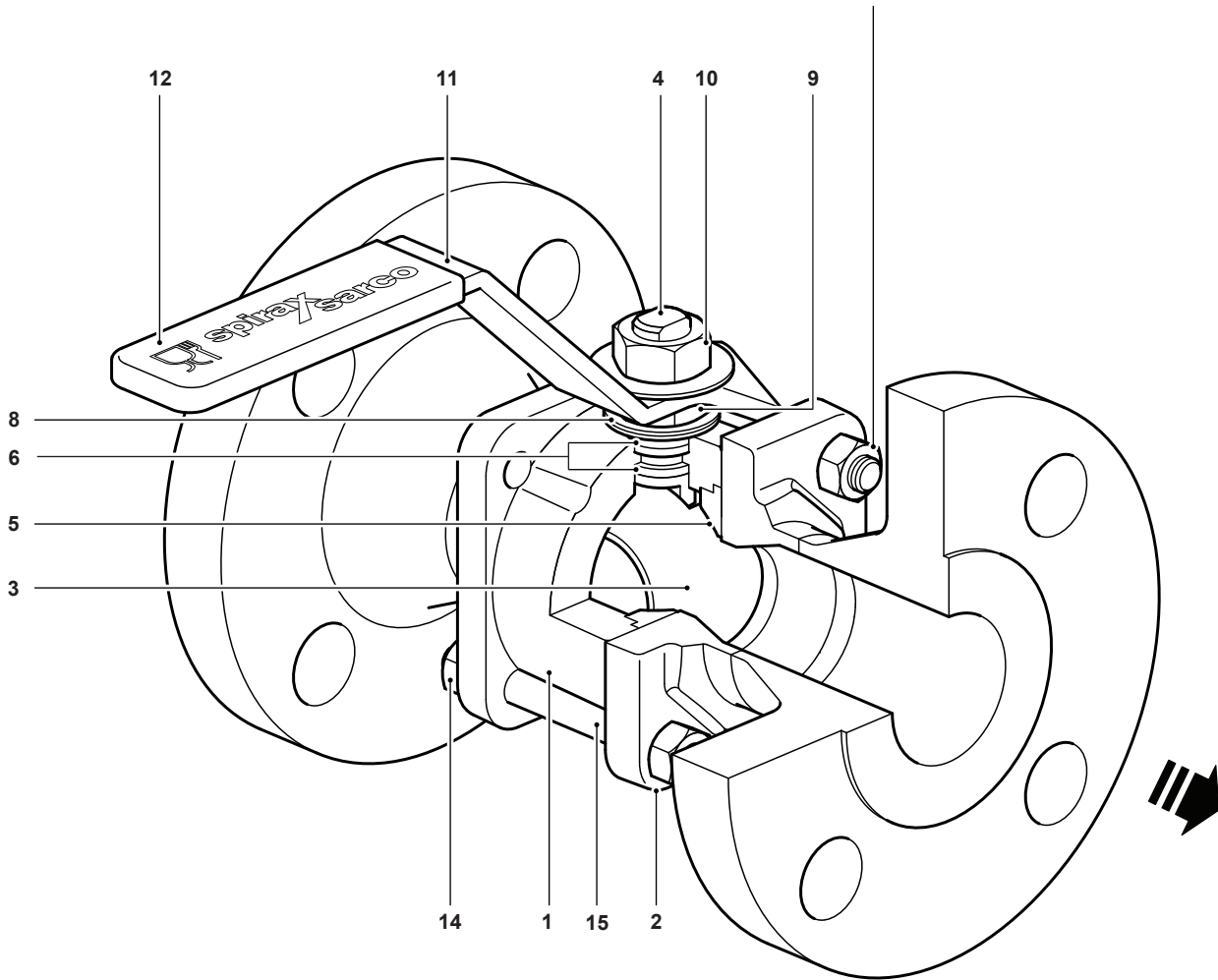
Body design conditions		PN100
PMA Maximum allowable pressure	70 bar g @ 40 °C	1015 psi g @ 105 °F
TMA Maximum allowable temperature	230 °C @ 0 bar g	446 °F @ 0 psi g
Minimum allowable temperature	-29 °C	-20 °F
PMO Maximum operating pressure for saturated steam service	12 bar g	174 psi g
TMO Maximum operating temperature	230 °C @ 0 bar g	446 °F @ 0 psi g
Minimum operating temperature	-29 °C	-20 °F
Note: For lower operating temperatures consult Spirax Sarco		
PMX Maximum differential pressure is limited to the PMO		
Designed for a maximum cold hydraulic test pressure of:	105 bar g	1523 psi g

Notes:

1. On the 2" FB and 2½" RB a TFM 1600 gasket is fitted between the body and cap.
2. In gases applications, the maximum operating pressure is restricted to 40 bar g (580 psi g).

Materials

Please note:
Screwed, butt weld and socket weld M10 ECF4 ball valves have bolts and nuts.
Flanged M10 ECF4 ball valves have studs and nuts.



No.	Part	Material	
1	Body	Stainless steel	ASTM A 182 F 316L
2	Cap	Stainless steel	ASTM A 182 F 316L
3	Ball	Stainless steel	AISI 316 L
4	Stem	Stainless steel	AISI 316 L
5	Seat	R-PTFE	
6	Stem seal	Virgin PTFE TFM 1600	
7	Separator (not shown)	Stainless steel	AISI 316
8	Spring washers	Stainless steel	AISI 301
9	Nut	Stainless steel	AISI 304
10	Stem nut	Stainless steel	AISI 304
11	Lever	Stainless steel	AISI 316
12	Grip	Vinyl	
13	Bolts (not shown - Screwed, butt weld and socket weld versions only)	Stainless steel	AISI 304
14	Nuts	Stainless steel	AISI 304
15	Studs	Stainless steel	AISI 304

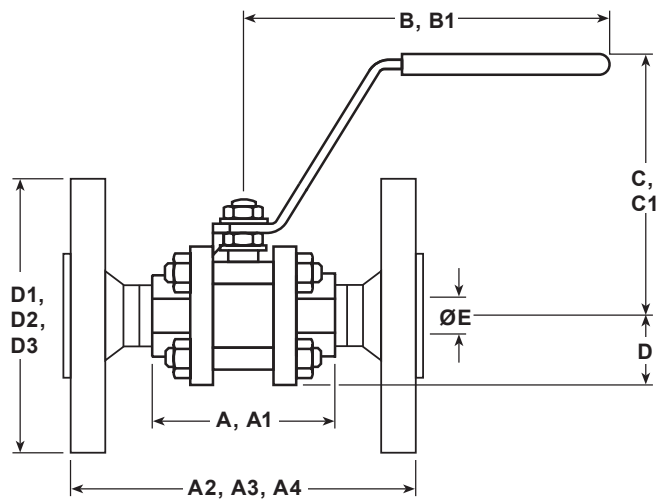
Dimensions (approximate) in mm

Reduced bore

Size	A	A1	A2	A3	A4	B	B1	C	C1	D	D1	D2	D3	E
½"	63	66	108	130	140	120	120	61	87	24	89	95	95	11
¾"	68	63	117	150	152	120	120	63	89	26	98	105	117	14
1"	86	84	127	160	165	157	157	91	91	31	108	115	124	21
1¼"	97	93	140	180	178	157	157	95	95	37	118	140	133	25
1½"	106	102	165	200	190	180	180	109	109	41	127	150	156	31
2"	124	118	178	230	216	180	180	115	115	48	152	165	165	38
2½"	152	152	191	290	241	245	245	132	132	57	178	185	190	51

Full bore

Size	A	A1	A2	A3	A4	B	B1	C	C1	D	D1	D2	D3	E
¼"	63	60				120		61		24				11
⅜"	63	63				120		61		24				11
½"	68	68	114	130	140	120	120	63	89	26	89	95	95	14
¾"	86	86	135	150	152	157	157	91	91	31	98	105	117	21
1"	97	97	148	160	165	157	157	95	95	37	108	115	124	25
1¼"	106	106	160	180	178	180	180	109	109	41	118	140	133	31
1½"	124	124	183	200	190	180	180	115	115	48	127	150	156	38
2"	152	152	215	230	216	245	245	132	132	57	152	165	165	51



- A:** Screwed and Butt weld
- A1:** Socket weld
- A2:** Flanged ASME 150
- A3:** Flanged PN40
- A4:** Flanged ASME 300
- B:** Screwed, Butt weld and Socket weld
- B1:** Flanged ASME 150, PN40
- C:** Screwed, Butt weld and Socket weld
- C1:** Flanged ASME 150, Flanged PN40
- D:** Screwed, Butt weld and Socket weld
- D1:** Flanged ASME 150
- D2:** Flanged PN40
- D3:** Flanged ASME 300

Weights (approximate) in kg

Size	Reduced bore				Full bore			
	Scrd/BW/SW	PN40	ASME150	ASME 300	Scrd/ BW/SW	PN40	ASME 150	ASME 300
1/4"					0.6			
3/8"					0.6			
1/2"	0.6	2.2	1.5	2.2	0.8	2.3	2.1	2.9
3/4"	0.8	3.0	2.1	2.9	1.5	3.5	2.9	4.5
1"	1.5	4.1	2.9	4.5	2.2	4.7	4.0	7.0
1 1/4"	2.2	5.9	4.0	7.0	2.7	6.2	5.8	8.4
1 1/2"	2.7	7.3	5.8	8.4	4.4	9.0	8.2	11.0
2"	4.4	10.4	8.2	11.0	7.6	10.2	16.0	17.5
2 1/2"	7.6	16.6	16.0	17.5				

Kv values

Size	1/4"	3/8"	1/2"	3/4"	1"	1 1/4"	1 1/2"	2"	2 1/2"
Reduced bore			6	10	27	49	70	103	168
Full bore	2.5	6.8	17	36	58	89	153	205	

For conversion:

C_v (UK) = $K_v \times 0.963$

C_v (US) = $K_v \times 1.156$

Operating torque (N m)

Size	1/4"	3/8"	1/2"	3/4"	1"	1 1/4"	1 1/2"	2"	2 1/2"
Reduced bore			2	3.5	13	21	30	40	45
Full bore	2	2	3.5	13	21	30	40	45	

The indicated torque values are for valves frequently operated, that are submitted to a maximum differential pressure of 40 bar g (580 psi g). Valves that are subject to long static periods, may require greater break-out torque.

Safety information, installation and maintenance

For full details see the Installation and Maintenance Instructions supplied with the product (IM-P167-29).

Welding

Only the models that have connections designed for welding (SW, BW, Imperial Tube connections) should be welded. Valves with SW or BW welding connections must be disassembled before welding onto the pipeline, the ends should be welded separately and the valve should be reassembled when the ends are cool.

How to order example:

1 off Spirax Sarco 1/2" screwed NPT M10 ECF4 FB ball valve.

Optional extras:

- Self-venting ball.
- Extended stems 50 mm (2") and 100 mm (4") to allow full insulation (not compatible with lockable handle).
- Lockable handle.

Spare parts

The spare parts available are shown in solid outline. Parts drawn in a grey line are not supplied as spares.

Available spares

Seat and stem seal set	5, 6
------------------------	------

How to order spares

Always order spares by using the description given in the column headed 'Available spares' and state the size and type of ball valve.
Example: 1 - Seat and stem seal set for a ½" M10 ECF4 FB ball valve.

