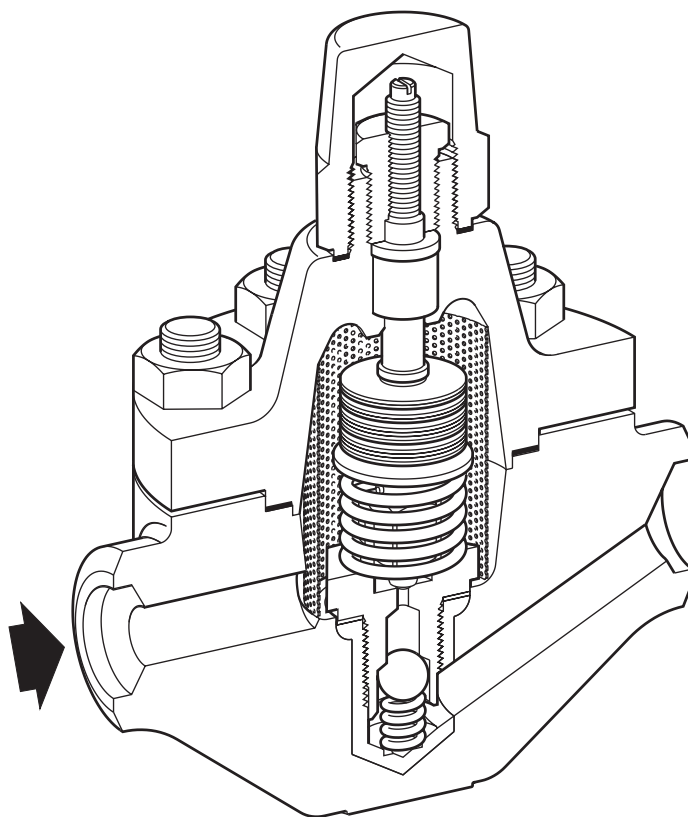




HP70 Series Bimetallic Steam Trap



Description

The Spirax Sarco HP70 bimetallic steam trap is made of a forged alloy steel, and designed for draining high pressure, high temperature steam lines and processes. This steam trap, which is specially designed for HP steam, has a reinforced stainless steel insert within the body and can be repaired inline. It operates with no loss of steam, and quickly drain air, non-condensable gases and large quantities of cold water on start-up.

Normally open in the event of failure, it has a check valve, a built-in strainer screen and an external device for adjusting the discharge temperature of the condensate.

Standards

This product fully complies with the requirements of the Pressure Equipment Directive 2014/68/EU.

Certification

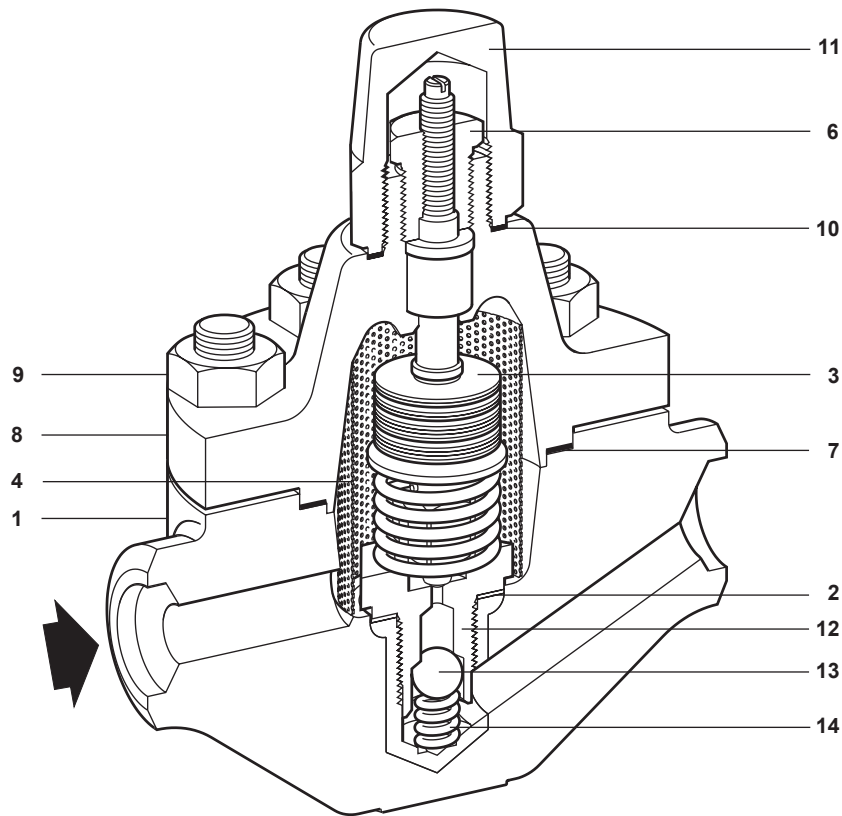
This product is available with certification to EN 10204 3.1

Note: All certification/inspection requirements must be stated at the time of order placement.

Sizes and pipe connections

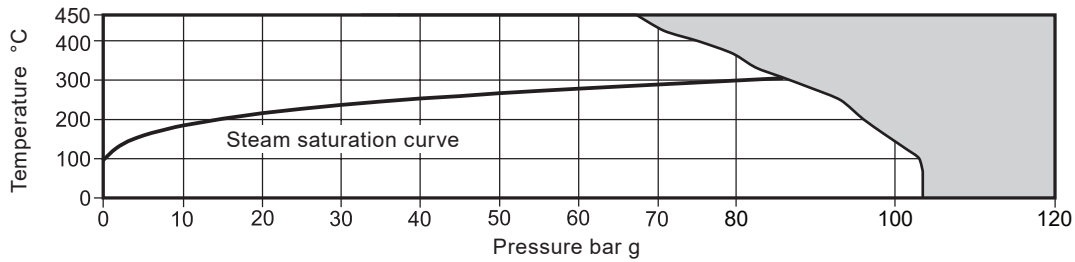
½", ¾" and 1" Socket weld to ASME B 16.11 or Butt weld to ASME B 16.25.

Materials



No.	Part	Material	
1	Body	Alloy steel	ASTM A182 F11
2	Valve seat gasket	Stainless steel	Z6 CN 18-09
3	Bimetallic element	Stainless steel	
4	Strainer screen	Stainless steel	AISI 304L
5	Gland packing	Graphite (asbestos-free)	
6	Locking gland nut	Stainless steel	Z10 CNF 18-09
7	Cover gasket	Spiral wound stainless steel and graphite (asbestos-free)	
8	Cover	Alloy steel	ASTM A182 F11
9	Cover stud	Steel	ASTM A193 Gr. B7
	Cover nut	Steel	ASTM A194 Gr. 2H
10	Blind nut gasket	Metal, stainless steel/graphite	
11	Blind nut	Steel	ASTM A105
12	Valve seat	Stainless steel	BS.970 431 29 & ASTM A276 431
13	Check valve	Stainless steel	BS.970 304S11
14	Check valve spring	Nickel-Chromium-Cobalt	NIMONIC 90

Pressure/temperature limits

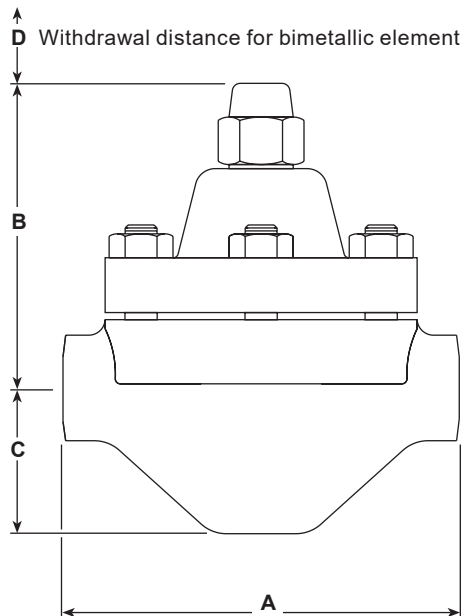


The product **must not** be used in this region.

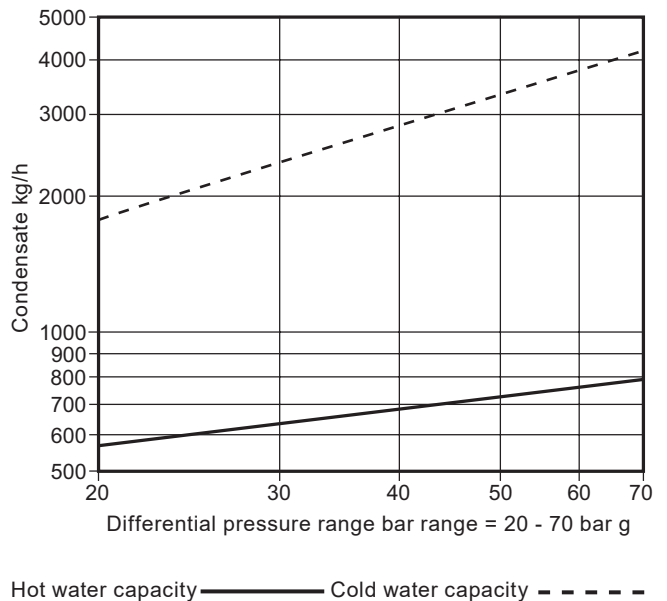
Body design condition	Class 600
PMA Maximum allowable pressure	103.4 bar g @ 50 °C
TMA Maximum allowable temperature	450 °C @ 67.7 bar g
PMO Maximum operating pressure	70 bar g @ 425 °C
TMO Maximum operating temperature	425 °C @ 70 bar g
Minimum allowable temperature	-14 °C
Minimum inlet pressure for satisfactory operation is:	20 bar g
Minimum operating temperature	0 °C
ΔPMX The backpressure for correct operation must not exceed 90% of the upstream pressure	
Designed for a maximum cold hydraulic test pressure of:	156 bar g

Dimensions/weights (approximately) in mm and kg

A	B	C	D	Weight
160	145	58	150	10.5



Capacities



Safety information, installation and maintenance

For full details see the Installation and Maintenance Instructions supplied with the product.

How to order

Example: 1 off Spirax Sarco ½" HP70 bimetallic steam trap with socket weld end connections.

Spare parts

The spare parts available are detailed below. No other parts are supplied as spares.

Available spares

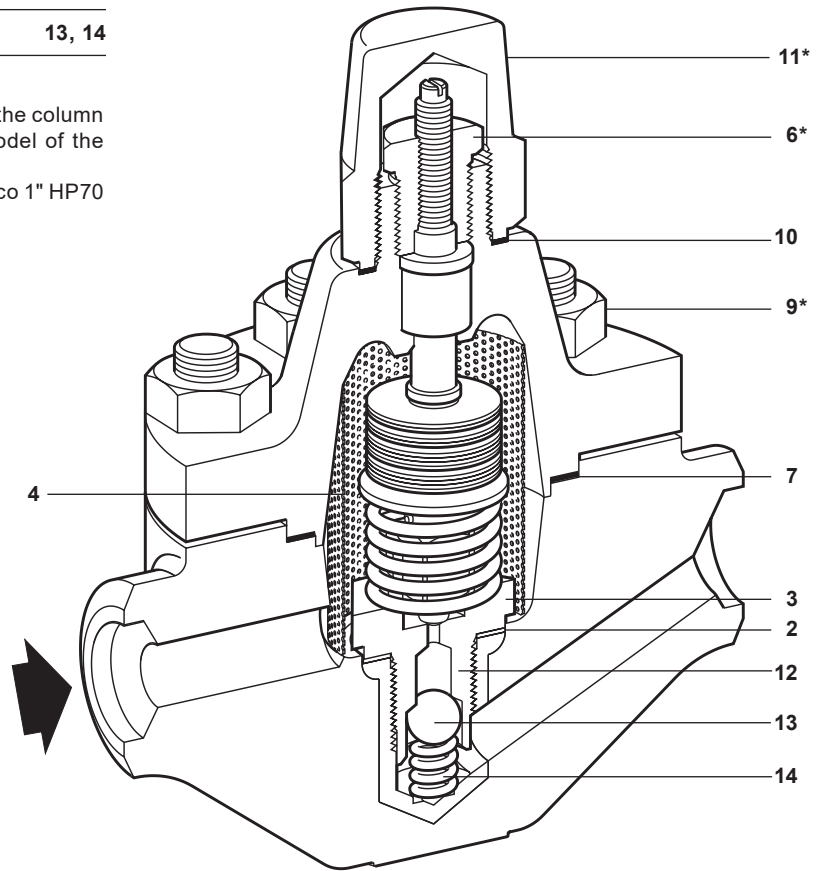
Bimetallic assembly kit	2, 3, 4, 7, 10, 12
Strainer screen	4
Cover gasket set (packet of 3)	7
Gasket set	2, 7, 10
Check valve assembly	13, 14

* **Note:** Items 6, 9 and 11 are not available as spares



How to order spares

Always order spares by using the description given in the column headed 'Available spares' and state the size and model of the bimetallic steam trap.

Example: 1 - Bimetallic assembly kit for a Spirax Sarco 1" HP70 bimetallic steam trap.



Recommended tightening torques

Item	 or mm 	N m
3	36 A/F	120
6	21 A/F	38
9	24 A/F	105
11	41 A/F	80