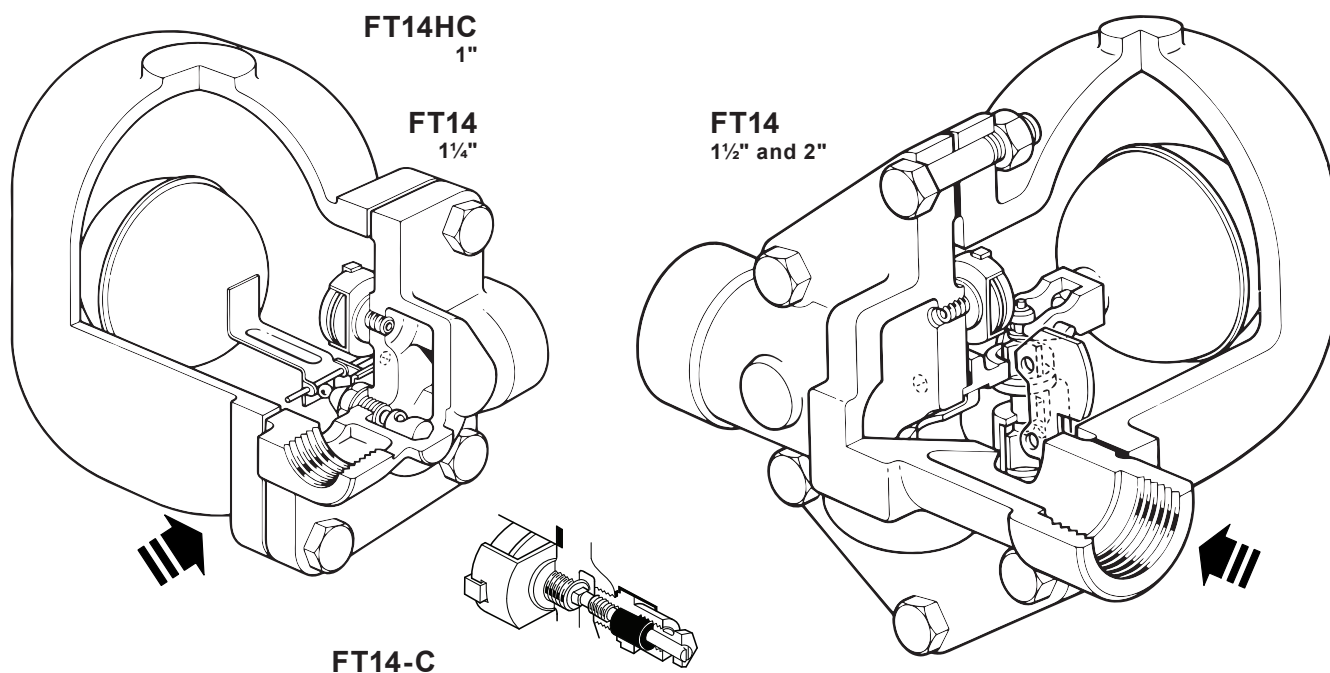




FT14 and FT14HC SG Iron

Ball Float Steam Traps (1" HC, 1¼", 1½" and 2")



Description

The FT14 and FT14HC are iron bodied ball float steam traps having stainless steel working internals and integral automatic air venting facility. These traps are supplied with horizontal screwed connections only and can be maintained without disturbing the pipework. The flow direction is as indicated on the valve body.

Available types

FT14	Standard 1¼", 1½" and 2"
FT14HC	High capacity (1" only) - As standard the FT14HC is available with flow direction in either left-to-right or right-to-left direction. Please state preference when placing an order.

Note: These ball float steam traps are available with either 4.5, 10 or 14 bar internals (Δ PMX).

Capsule

The BP99/32 capsule which is used in the FT14 and FT14HC ball float steam traps is suitable for use on 150 °C superheat @ 0 bar g and 50 °C superheat @ 32 bar g.

Optional extras will only be supplied if specified at the point of order

A manually adjustable needle valve (designated 'C' on the nomenclature i.e. **FT14-C**) can be fitted to the trap. This option provides a **steam lock release (SLR)** feature in addition to the standard air vent. For further information please consult Spirax Sarco.

The top of the cover can be drilled and tapped up to ⅜" BSP T Rp (ISO 7-1) or NPT for the purpose of fitting a balance line.

The bottom of the cover can be drilled and tapped ⅜" BSP T Rp (ISO 7-1) or NPT for the purpose of fitting a drain cock.

Standards

This product fully complies with the requirements of the European Pressure Equipment Directive 2014/68/EU.

Certification

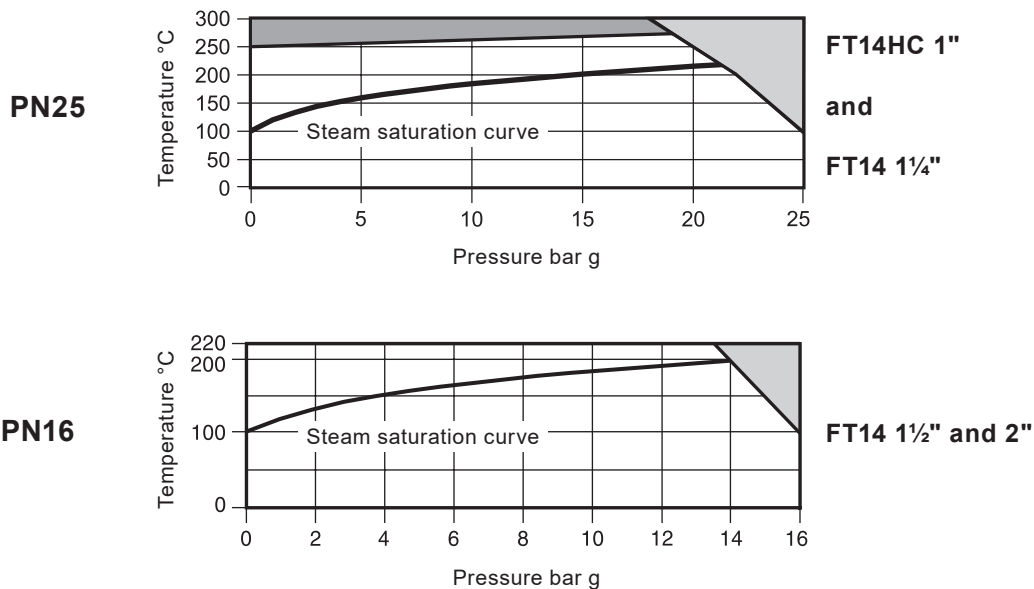
This product is available with a manufacturers' Typical Test Report.

Note: All certification/inspection requirements must be stated at the time of order placement.


Sizes and pipe connections

1" (FT14HC only), 1¼", 1½" and 2" screwed BSP T Rp (ISO 7-1) and NPT.

Pressure/temperature limits

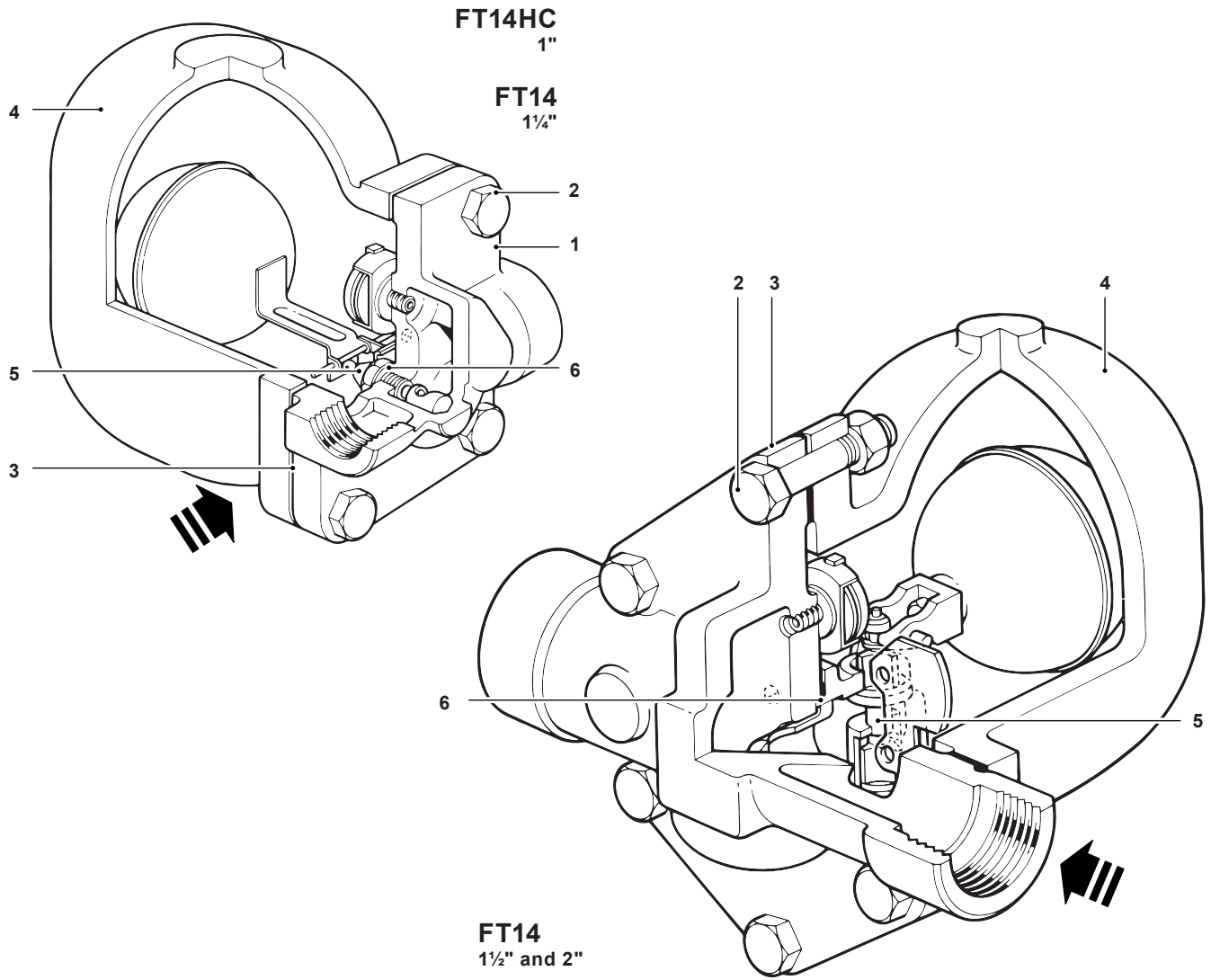


 The product **must not** be used in this region.

 The product should not be used in this region or beyond its operating range as damage to the internals may occur.

Size	1" HC and 1¼"	1½" and 2"		
Body design conditions	PN25	PN16		
PMA Maximum allowable pressure	25 bar g @ 100 °C	16 bar g @ 100 °C		
TMA Maximum allowable temperature	300 °C @ 18 bar g	220 °C @ 13.5 bar g		
Minimum allowable temperature	-10 °C	-10 °C		
PMO Maximum operating pressure for saturated steam service	21 bar g	14 bar g		
TMO Maximum operating temperature	275 °C @ 19 bar g	220 °C @ 13.5 bar g		
Minimum operating temperature	0 °C	0 °C		
Note: For lower temperatures consult Spirax Sarco				
	Size	1" HC	1¼"	1½" and 2"
ΔPMX Maximum differential pressure	4.5 bar	FT14HC-4.5	FT14-4.5	FT14-4.5
	10 bar	FT14HC-10	FT14-10	FT14-10
	14 bar	FT14HC-14	FT14-14	FT14-14
Product is safe for use under full vacuum conditions				
Designed for a maximum cold hydraulic test pressure of:		38 bar g		24 bar g

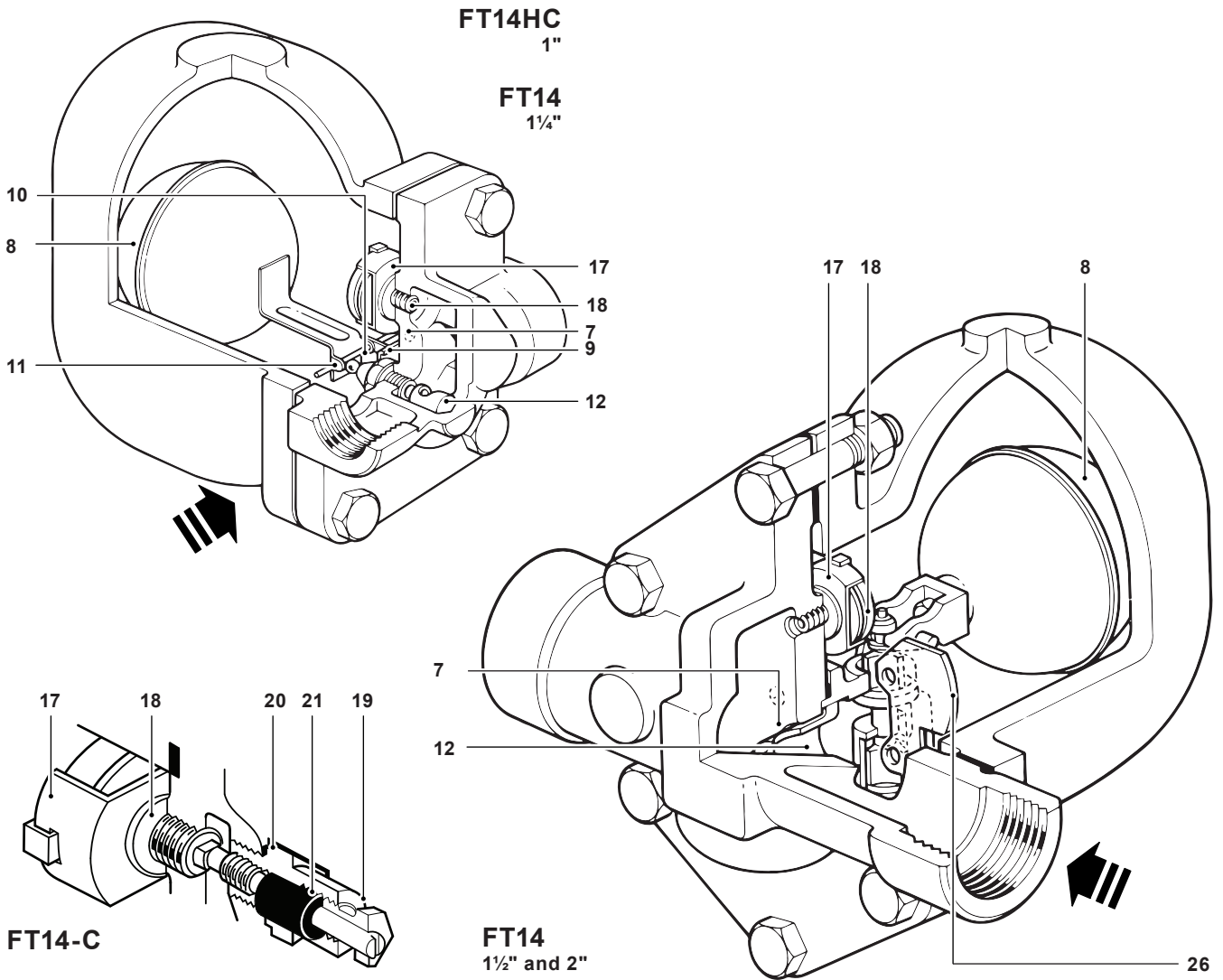
Materials



No.	Part		Material	
1	Body	1" and 1 1/4"	SG iron	BS EN 1563 JS 1030
		1 1/2" and 2"	Cast iron	DIN 1691 GG 25
2	Cover bolts	1"	Steel	BS 3692 Gr. 8.8
		1 1/4"	Steel	ASTM A193 B7
3	Cover gasket	1 1/2" and 2"	Steel	BS 3692 Gr. 8.8
			Reinforced exfoliated graphite	
4	Cover	1" and 1 1/4"	SG iron	BS EN 1563 JS 1030
		1 1/2" and 2"	Cast iron	DIN 1961 GG 25
5	Valve seat	1" and 1 1/4"	Stainless steel	BS 970 431 S29
	Main valve assembly with erosion deflector	1 1/2" and 2"	Stainless steel	BS 3146 Part 2 ANC 2
	Valve seat gasket	1" and 1 1/4"	Stainless steel	BS 1449 304 S11
6	Main valve assembly gasket	1 1/2" and 2"	Reinforced exfoliated graphite	
	Pivot frame assembly set screws	1" and 1 1/4"	Stainless steel	BS 4183 18/8

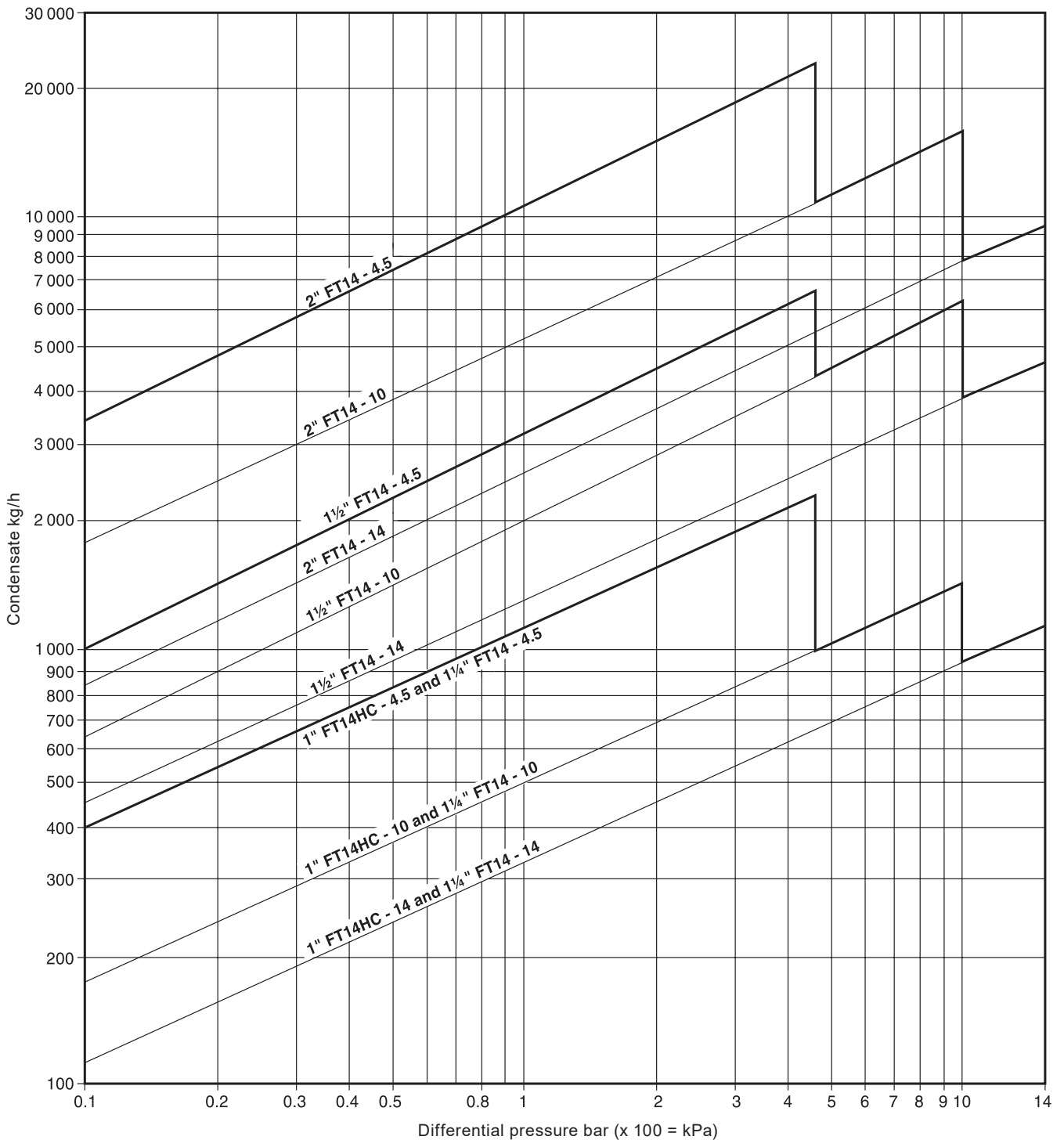
Materials are continued on the next page

Materials (continued)



No.	Part	Material
7	Main valve assembly bolts	Bolts 1½"
		Studs and nuts 2"
8	Ball float and lever	Stainless steel ISO 3506-2: A2-70
9	Support frame	Stainless steel BS 6105 A4-80
10	Pivot frame	Stainless steel BS 1449 304 S16
11	Pivot pin	Stainless steel BS 1449 304 S16
12	Erosion deflector	Stainless steel BS 970 431 S29
17	Air vent assembly	Stainless steel
18	Air vent seat gasket	Stainless steel BS 1449 304 S11
19	SLR assembly	Stainless steel BS 970 303 S21
20	SLR gasket	Mild steel BS 1449 CS4
21	SLR seal	Graphite
26	Inlet plate	Stainless steel BS 1449 304 S16

Capacities



Additional cold water capacities from the thermostatic air vent under start-up conditions

Capacities shown above are based on condensate at saturation temperature. Under start-up conditions when the condensate is cold the internal thermostatic air vent will be open and provides additional capacity to the main valve.

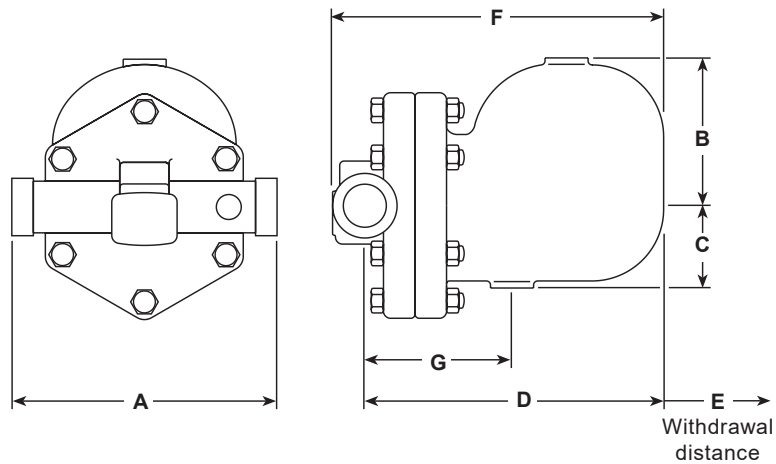
The following table gives the minimum additional cold water capacities from the air vent.

ΔP (bar)	0.5	1	2	3	4.5	7	10	14
	Minimum additional cold water capacity (kg/h)							
1" HC	580	600	650	670	700	1000	1300	1600
1 1/4, 1 1/2" and 2"	580	600	650	670	700	1000	1300	1600

Dimensions/weights (approximate) in mm and kg

Size	A	B	C	D	E	F	G	Weight
1" HC	120	110	80	195	160	220	115	6.8
1¼"	120	110	80	195	160	220	115	6.9
1½"	270	130	108	248	200	270	115	17.5
2"	300	138	125	250	200	288	140	22.0

1½" and 2" shown



Safety information, installation and maintenance

For full details see the Installation and Maintenance Instructions (IM-S02-30) supplied with the product.

Installation note:

The FT14 must be installed with the direction of flow as indicated on the body, and with the float arm in a horizontal plane so that it rises and falls vertically.

Disposal

This product is recyclable. No ecological hazard is anticipated with the disposal of this product providing due care is taken.

How to order

Example: 1 off Spirax Sarco 1" screwed BSP T Rp (ISO 7-1) FT14HC-14 ball float steam trap having an SG iron body and cover, with thermostatic air vent - flow direction left-to-right. The cover is to be suitable for tapping ⅜" for drain/balance pipe connection.

Spare parts

The spare parts available are shown in solid outlines. Parts drawn in a grey line are not supplied as spares.

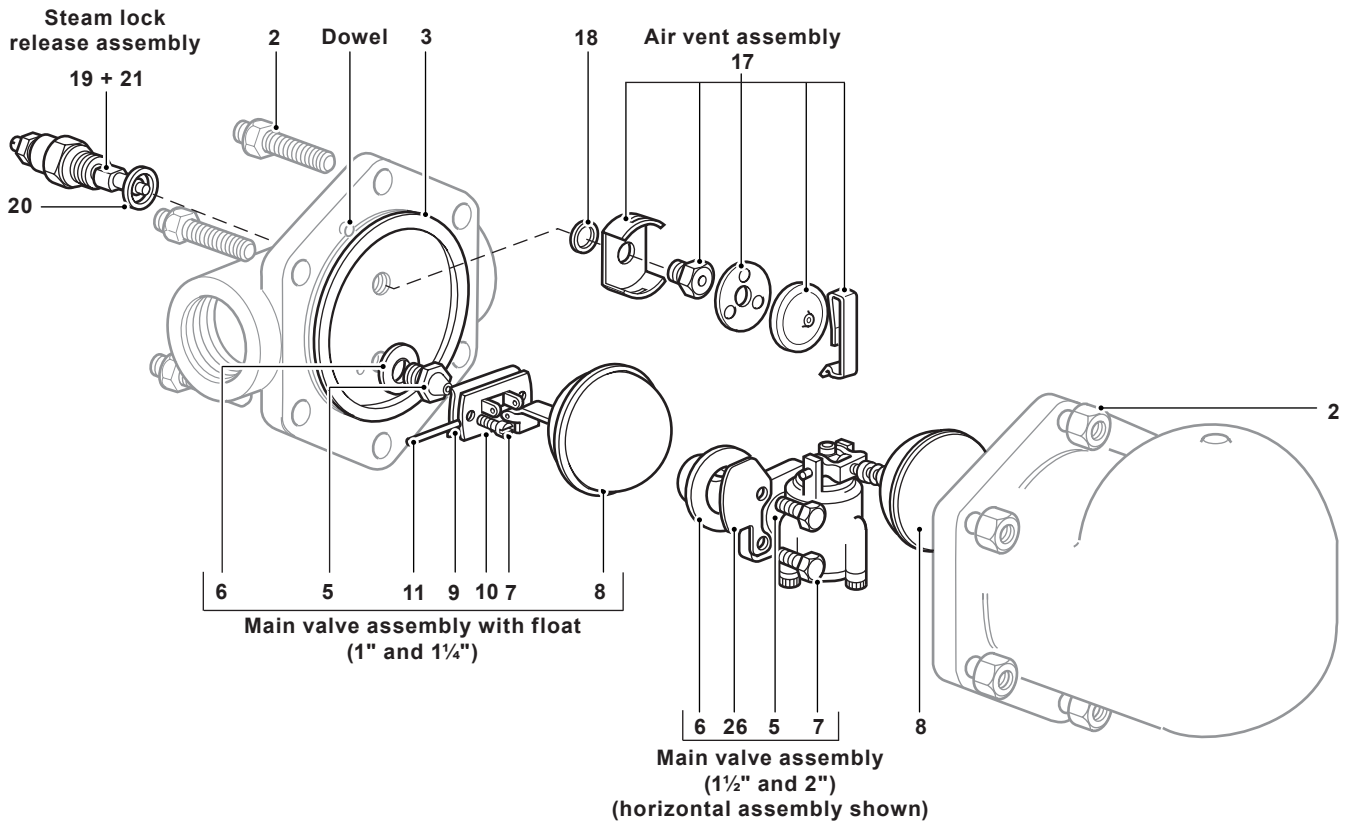
Available spares

Main valve assembly	with float (1" and 1¼")	5, 6, 7, 8, 9, 10, 11	Note: The erosion deflector on the 1" and 1¼" is pressed into the body during manufacture and is not available as a spare.
	with erosion deflector (1½" and 2")	5, 6, 7, 26	
Ball float (1½" and 2")		8	
Air vent assembly		17, 18	
Manually adjustable needle valve (SLR) and air vent assembly		17, 18, 19, 20, 21	
Complete set of gaskets (packet of 3 sets)		3, 6, 18, 20	



How to order spares



Always order spares by using the description given in the column headed 'Available spares' and state the size and type of trap.

Example: 1 - Air vent assembly for a Spirax Sarco 2" FT14-4.5 ball float steam trap.



Recommended tightening torques

Item	Size	 or mm		N m
2	1"	17	M10 x 30	29-33
	1¼"	14*	M10 x 30	29-33
	1½"	19	M12 x 60	60-66
	2"	24	M16 x 70	80-88
5	1" and 1¼"	17	-	40-45

Item	Size	 or mm		N m
7	1" and 1¼"	-	M5 x 20	10-12
	1½"	10	M6 x 20	10-12
	2"	13	M8 x 20	20-24
17	-	17	-	50-55
19	-	21	-	40-45

*Note: Reduced A/F bolt head required