



## CA14 SG Iron Air and Gas Trap ½" and ¾" (Screwed)

### Description

The CA14 is a range of float type automatic liquid drainers for air and gas systems. The body and cover are of SG iron and the complete unit is readily maintainable.

The standard version with a Viton valve cone is designated CA14.

A stainless steel valve cone version is designated CA14S.

### Operating media

The CA14 is designed for use on air or gases within PED group 2.

**Note:** The CA14 is not suitable for use on PED group 1 liquids or gases.

### Standards

The product fully complies with the requirements of the European Pressure Equipment Directive 2014/68/EU.

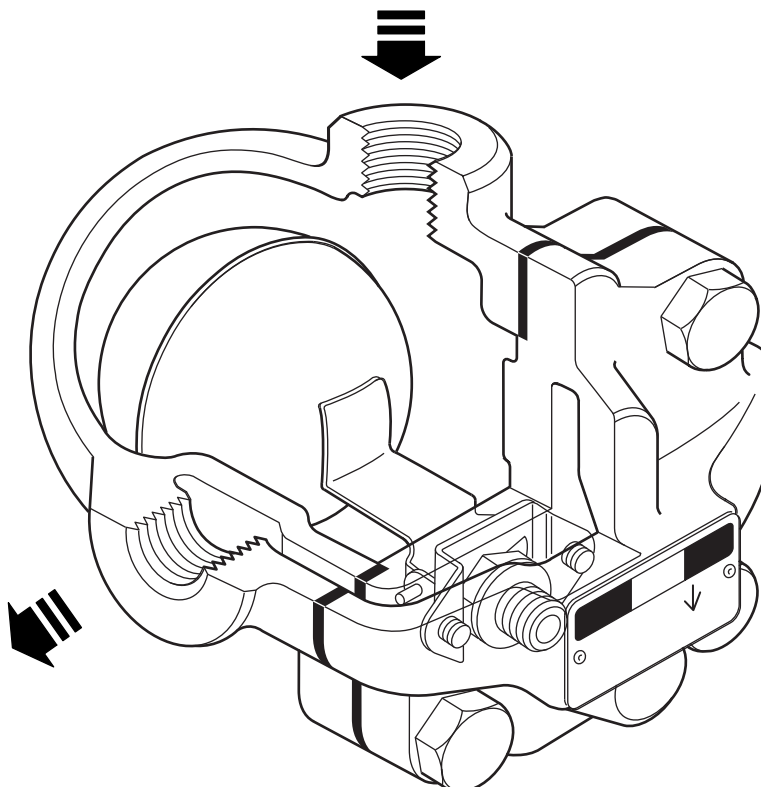
### Certification

The product is available with material certification to EN 10204 2.2.

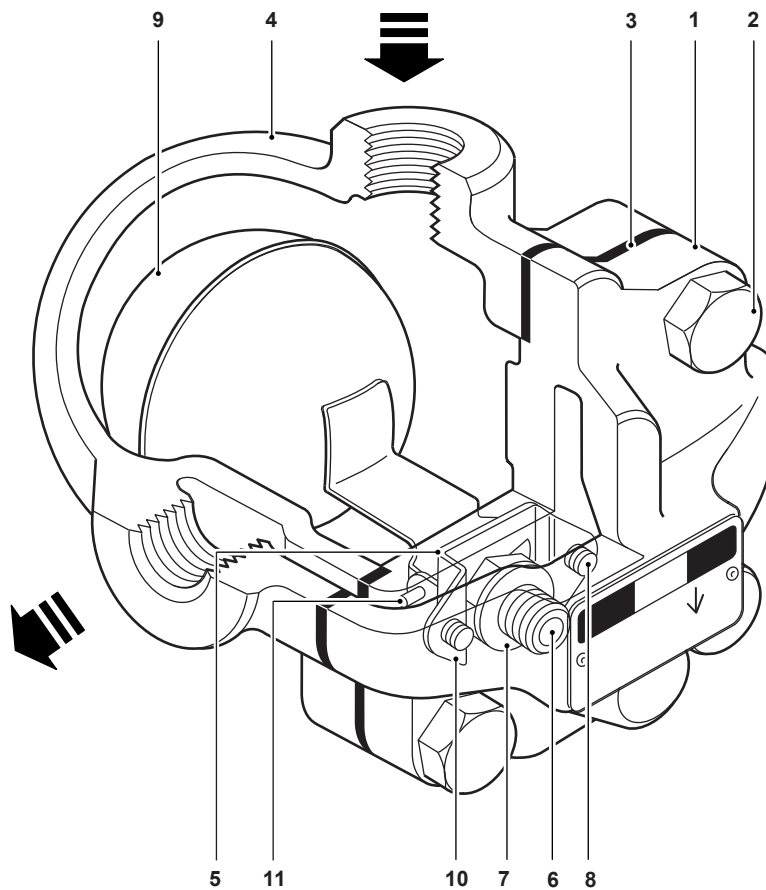
**Note:** All certification/inspection requirements must be stated at the time of order placement.

### Sizes and pipe connections

½" and ¾" screwed BSP T Rp (ISO 7-1) or NPT.

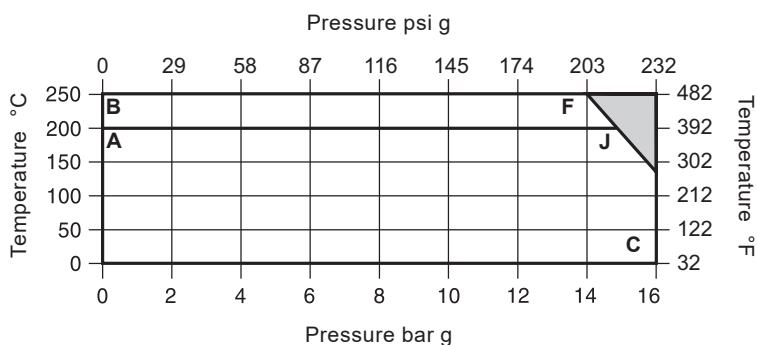


## Material



No.	Part	Material	
1	Body	SG iron	EN-GJS-400-15
2	Cover bolt	Steel	BS 3692 Gr. 8.8
3	Cover gasket	Reinforced exfoliated graphite	
4	Cover	SG iron	EN-GJS-400-15
5	Main valve cone	CA14	Synthetic rubber Viton
		CA14S	Stainless steel AISI 440B
6	Main valve seat	Stainless steel	BS 970 431 S29
7	Main valve seat gasket	Stainless steel	BS 1449 304 S11
8	Main valve assembly screws	Stainless steel	BS 6105 CI A270
9	Ball float and lever	Stainless steel	BS 1449 304 S16
10	Pivot frame	Stainless steel	BS 1449 304 S16
11	Pivot pin	Stainless steel	

## Pressure/temperature limits



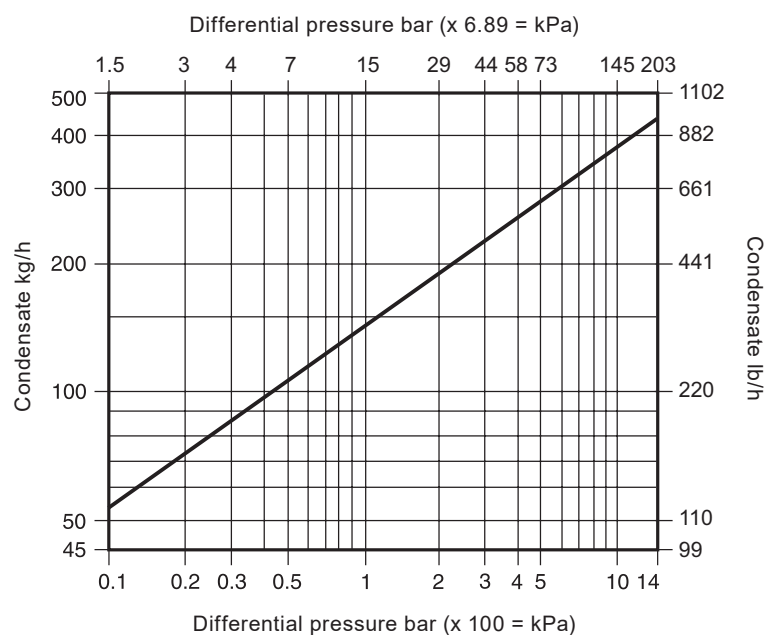
The product **must not** be used in this region.

**A-J-C** CA14 screwed BSP T Rp (ISO 7-1) or NPT.

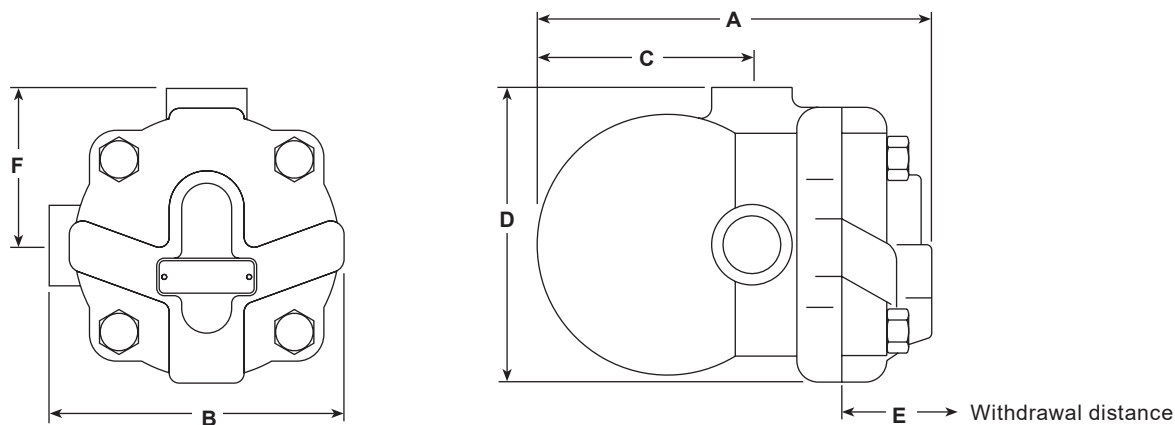
**B-F-C** CA14S screwed BSP T Rp (ISO 7-1) or NPT.

Body design conditions					PN16	
PMA	Maximum allowable pressure			16 bar g @ 120 °C	(232 psi g @ 248 °F)	
TMA	Maximum allowable temperature			250 °C	(482 °F)	
Minimum allowable temperature				0 °C	(32 °F)	
PMO	Maximum operating pressure			16 bar g	(232 psi g)	
TMO	Maximum operating temperature:	CA14	200 °C @ 14.7 bar g		(392 °F @ 213 psi g)	
		CA14S	250 °C @ 13.9 bar g		(482 °F @ 202 psi g)	
Minimum operating temperature				0 °C	(32 °F)	
ΔPMX	Maximum differential pressure bar, depending on the specific gravity of the liquid being drained:					
	Specific gravity	1.0	0.9	0.8	0.7	Min. 0.6
	ΔPMX bar (psi)	14.0 (203)	14.0 (203)	14.0 (203)	9.0 (131)	5.0 (73)
ΔPMN	Minimum differential pressure			0.1 bar	(1.5 psi)	
Product is safe for use under full vacuum conditions						
Designed for a maximum cold hydraulic test pressure of				24 bar g	(348 psi g)	

## Capacities



## Dimensions/weights (approximate) in mm (inches) and kg (lbs)



Size	A	B	C	D	E	F	Weight
1/2"	147	114	80	114	105	60.5	2.5
3/4"	(5.8)	(4.5)	(3.2)	(4.5)	(4.1)	(2.4)	(5.5)

## Safety information, Installation and Maintenance

For full details see the Installation and Maintenance Instructions (IM-P144-02) supplied with the product.

### Installation note:

The CA14 must be installed with the direction of flow as indicated on the body, and with the float arm in a horizontal plain so that it rises and falls vertically.

### Disposal

If a product which contains a Viton component has been subjected to a temperature approaching 315 °C or higher, then it may have decomposed and formed hydrofluoric acid. Avoid skin contact and inhalation of any fumes as the acid will cause deep skin burns and damage to the respiratory system. Viton must be disposed of in a recognised manner as stated in the Installation and Maintenance Instructions. No other ecological hazard is anticipated with the disposal of this product providing due care is taken.

## How to order

**Example:** 1 off Spirax Sarco 1/2" CA14 having screwed BSP T Rp (ISO 7-1) connections with SG iron body and cover.

## Spare parts

The spare parts available are shown in heavy outline. Parts drawn in a grey line are not supplied as spares.

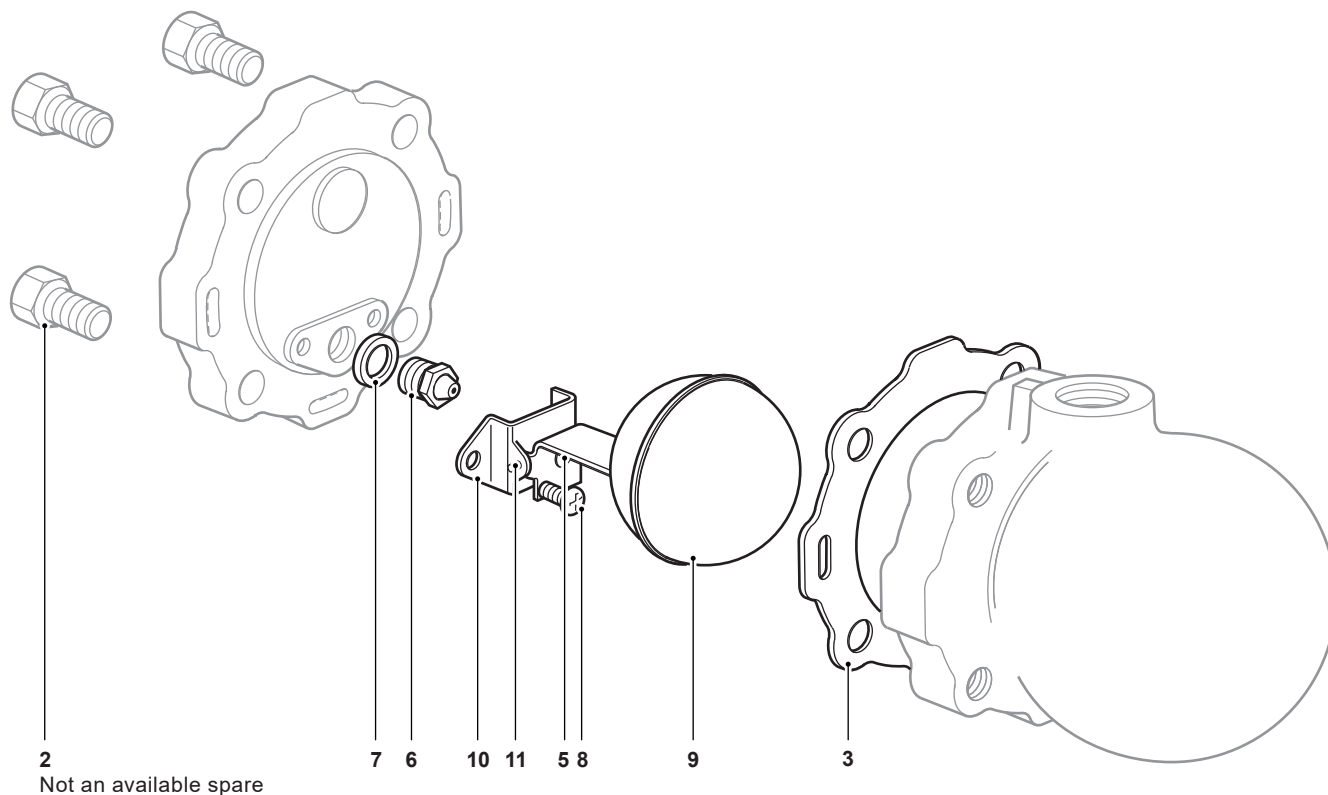
### Available spares

Maintenance kit	CA14	3, 5+9, 6, 7, 8 (2 off), 10, 11
	CA14S	3, 5+9, 6, 7, 8 (2 off), 10, 11
Seal kit	CA14	3, 5



### How to order spares

Always order spares by using the description given in the column headed 'Available spares' and state the size and type of trap.

**Example:** 1 off Maintenance kit for a Spirax Sarco ½" CA14 air and gas trap.



### Recommended tightening torques

Item	 or mm		N m	(lbf ft)
2	17 A/F	M10 x 30	47 - 50	(35 - 37)
6	17 A/F		50 - 55	(37 - 41)
8	Pozidrive	M4 x 6	2.5 - 3.0	(1.8 - 2.2)