

spirax sarco

BX and BXRA Gunmetal Self-acting Control Valves

Description

The BX range of two-port valves are used in conjunction with Spirax Sarco SA control systems to provide a self-acting temperature control unit.

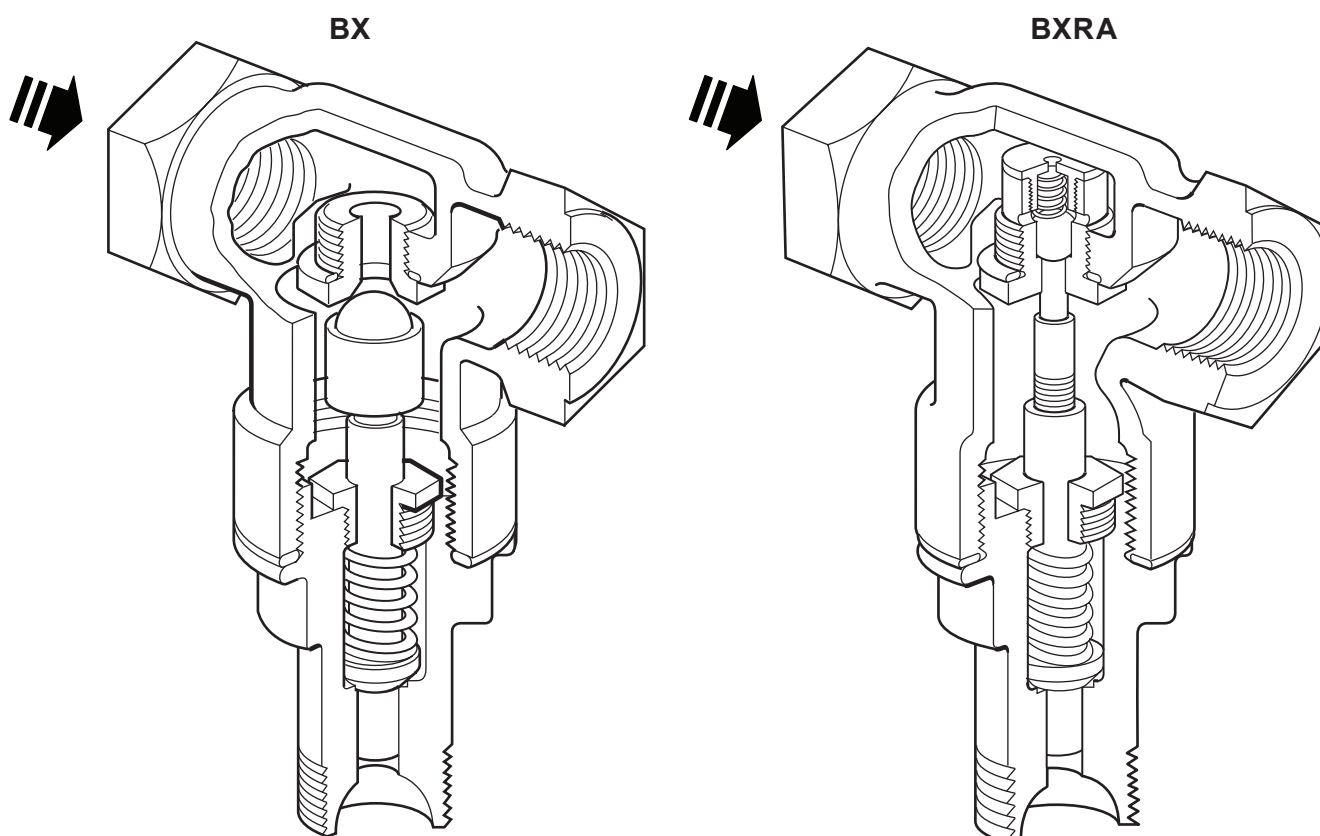
Available types

BX Normally open, single seat with four different orifice sizes: **BX2, BX3, BX4 and BX6**.

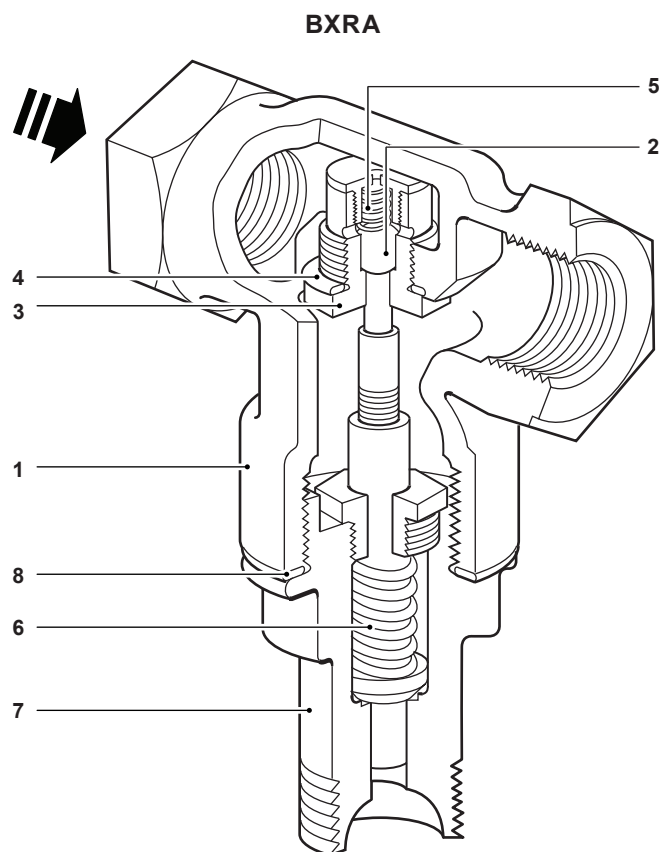
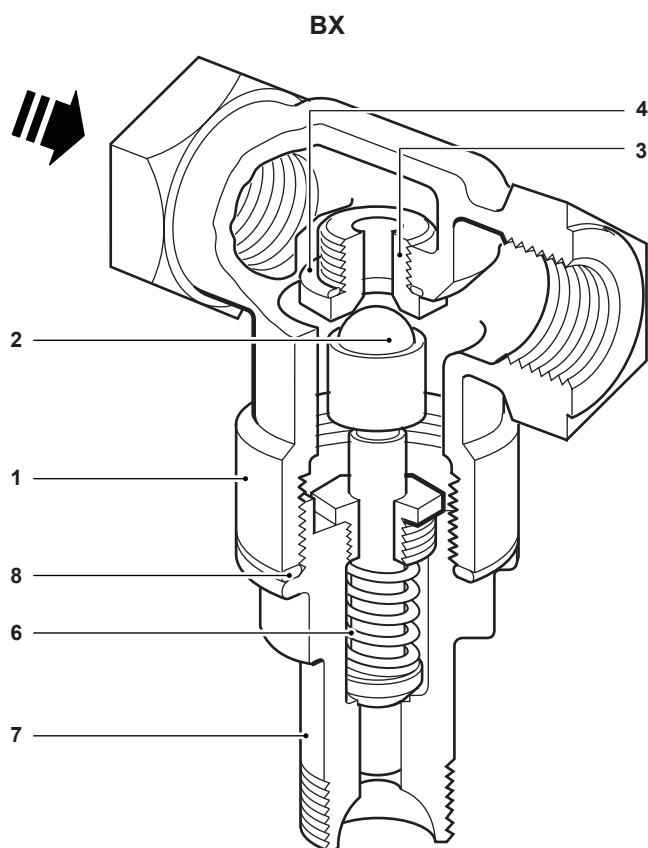
BXRA Normally closed, single seat.

Sizes and pipe connections

½" screwed BSP (BS 21 parallel) or NPT.

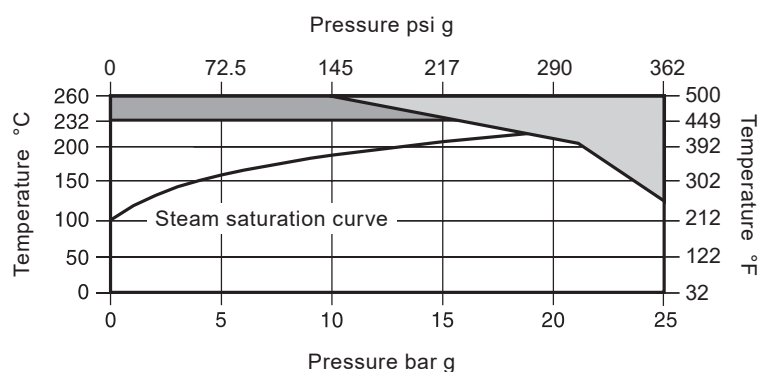


Materials



No.	Part	Material	
1	Body	Gunmetal	CC491 K or CC491 K M
2	Valve closure member	Stainless steel	AISI 440B
3	Valve seat ring	Stainless steel	BS 970 431 S29
4	Valve seat gasket	Copper	BS 2870 C102
5	Ball return spring	Stainless steel	BS 2056 302 S26
6	Main return spring	Stainless steel	BS 2056 302 S26
7	Bonnet	Brass	BS 2872 CZ 122
8	Bonnet gasket	Reinforced exfoliated graphite	

Pressure/temperature limits



The product **must not** be used in this region.

When the valve is operated with a self-acting temperature control system in this region, a Spirax Sarco spacer must be used.

Body design conditions		PN25	
Maximum design temperature	Fitted to a Spirax Sarco spacer	260 °C	500 °F
	Fitted directly to an actuator	232 °C	450 °F
Maximum differential pressure	BX	17.2 bar	250 psi
	BXRA	10.3 bar	150 psi
Designed for a maximum cold hydraulic test pressure of:		38 bar g	550 psi g

K_v values

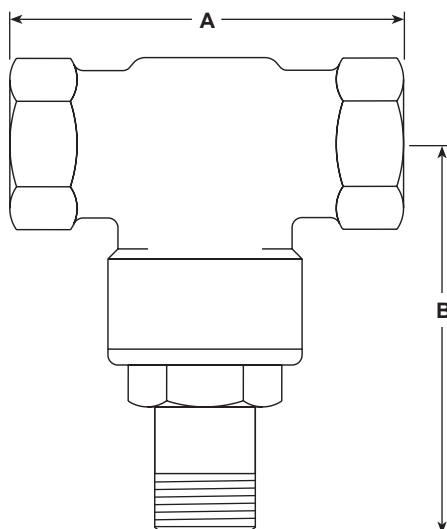
BX2	BX3	BX4	BX6	BXRA	For conversion: C _v (UK) = K _v x 0.963 C _v (US) = K _v x 1.156
0.38	0.64	1.03	1.65	0.59	

Capacities

For saturated steam sizing capacities, see TI-GCM-08.

For water sizing capacities, see TI-GCM-09.

Dimensions / weights (approximate) in mm (inches) and kg (lbs)



Size	A	B	Weight
1/2"	80 (3.15")	83 (3.15")	0.7 (1.54)

Safety information, installation and maintenance

For full details see the Installation and Maintenance Instructions supplied with the product.

Installation note:

The valve should be fitted in a horizontal line. The actuator position will depend on the type fitted to the valve.

How to order

Example: 1 off Spirax Sarco 1/2" screwed BSP BX4 self-acting control valve with gunmetal body and stainless steel trim.

Spare parts

The spare parts available are shown in solid outline. Parts drawn in a grey line are not supplied as spares.

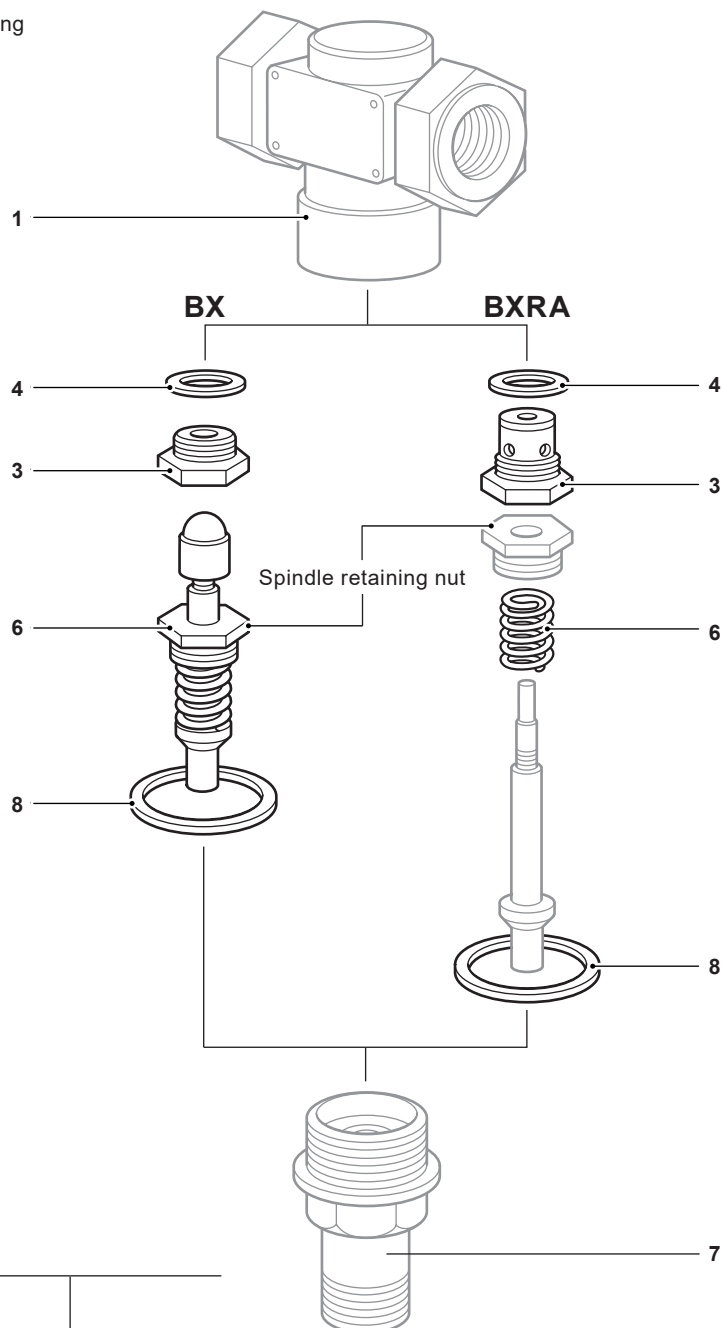
Available spares

Valve seat assembly	BX valve	3, 4, 6, 8
	BXRA valve	3, 4, 6, 8
Gasket set (packet of 3 each)		4, 8



How to order spares

Always order spares by using the description given in the column headed 'Available spares' and state the size and type of valve.

Example: 1 - Valve seat assembly for a ½" BXRA self-acting control valve.



Recommended tightening torques

Item	Part	 or 	N m	ft lbf
3	Valve seat	18 A/F	40 - 50	30 - 37
7	Bonnet		40 - 50	30 - 37