

## Venting and Non-venting Ball Valve

### Description

A full bore ball valve suitable for compressed air and other fluids and gases compatible with the materials of construction and pressure/temperature limits (contact Spirax Sarco for details). It is designed to provide dead tight shut-off for pneumatic and other applications.

When the valve is moved to the closed position (supply off) on self-venting models, the downstream pressure will slowly exhaust through the vent orifice (V). Self-venting models carry a flow direction arrow.

The illustration shows the self-venting valve in the closed position.

### Principal features:

- Full bore for good flow characteristics (to BS 5351).
- Suitable for inert industrial gases.
- Suitable for water and other similar fluids.
- All PTFE seals.
- Hard chrome self-cleaning ball.
- Anti blow-out stem and inner seal.

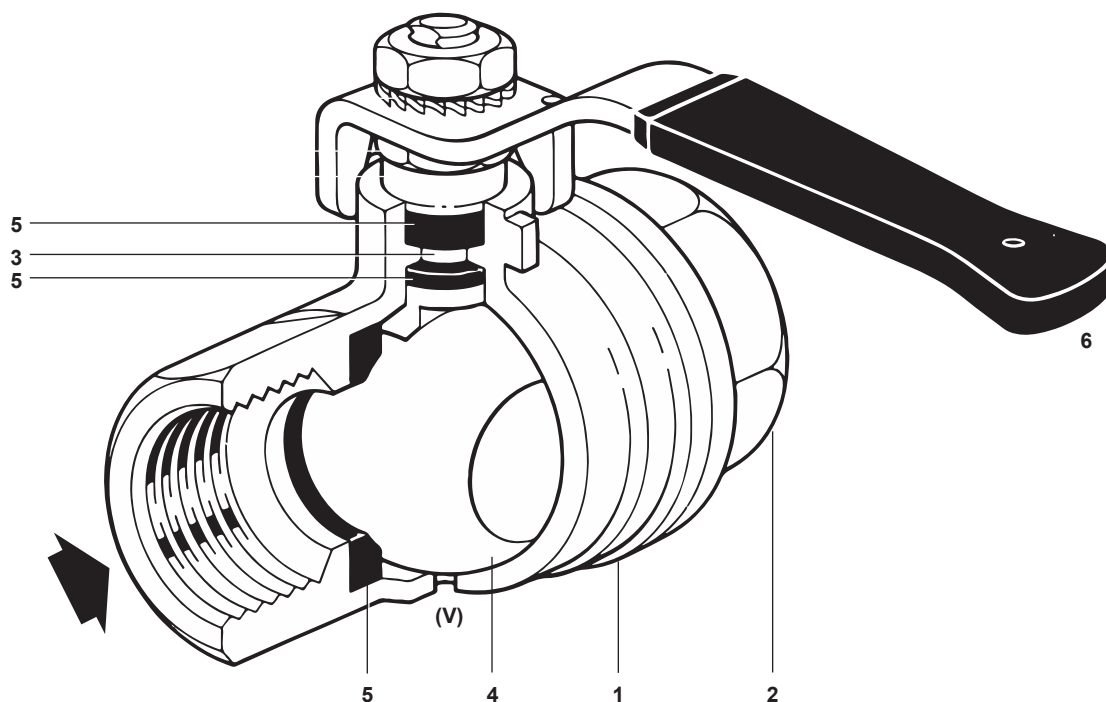
### Sizes and end connections

V - Venting 1/4", 3/8", 1/2", 3/4", and 1" screwed BSP

NV - Non-venting 1/4", 3/8", 1/2", 3/4", 1", 1 1/4", 1 1/2" and 2" screwed BSP

### Materials

No.	Part	Material
1	Body	Brass nickel plated
2	Cap	Brass nickel plated
3	Spindle	Brass nickel plated
4	Ball	Brass chrome plated
5	Seals	PTFE
6	Handle	Steel chrome plated blue PVC sleeve



## Pressure/temperature limits

	Venting	Non-venting
Maximum operating pressure	10 bar	40 bar
Maximum operating temperature	100 °C	110 °C
Minimum operating temperature	-20 °C	-20 °C

## K<sub>V</sub> values

Size	¼"	⅜"	½"	¾"	1"	1¼"	1½"	2"
K <sub>V</sub>	5.9	9.4	17	41	70	121	200	292

For conversion: C<sub>V</sub> (UK) = K<sub>V</sub> x 0.963 C<sub>V</sub> (US) = K<sub>V</sub> x 1.156

## Installation

Always install the valve with the flow direction as indicated on the body of the self-venting models.

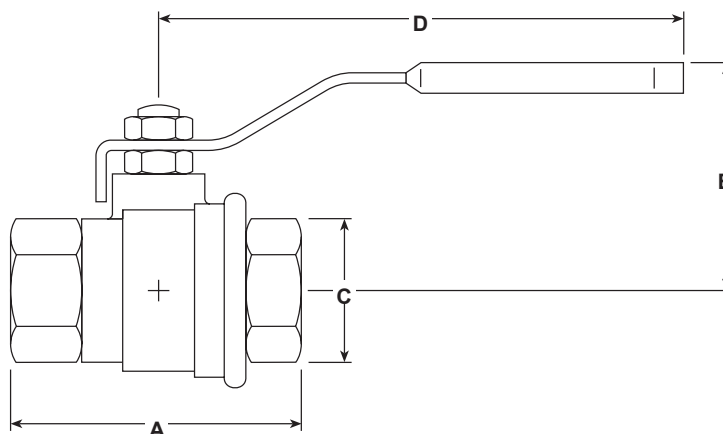
## Dimensions / weights (approximate) in mm and kg

### Non-venting types

Size	A	B	C	D	Weight
¼"	46.0	41	20.0	89	0.143
⅜"	46.0	41	20.0	89	0.126
½"	56.7	48	25.0	88	0.207
¾"	67.0	55	32.0	84	0.308
1"	78.0	55	39.5	125	0.464
1¼"	88.0	80	49.0	140	0.735
1½"	99.3	87	56.0	140	0.960
2"	121.0	92	69.0	165	1.537

### Self-venting types

Size	A	B	C	D	Weight
¼"	52	42	22.5	96	0.17
⅜"	52	42	22.5	96	0.2
½"	62	46	29.5	96	0.22
¾"	69	58	32.0	121	0.36
1"	83	62	40.5	121	0.55



## How to order

Example: 1 off screwed BSP self-venting ball valve.