

OVERFLOW INCIDENT DETECTOR

Non intrusive temperature sensors with our cloud-based monitoring system provides 24/7 alerts to overflowing tanks.



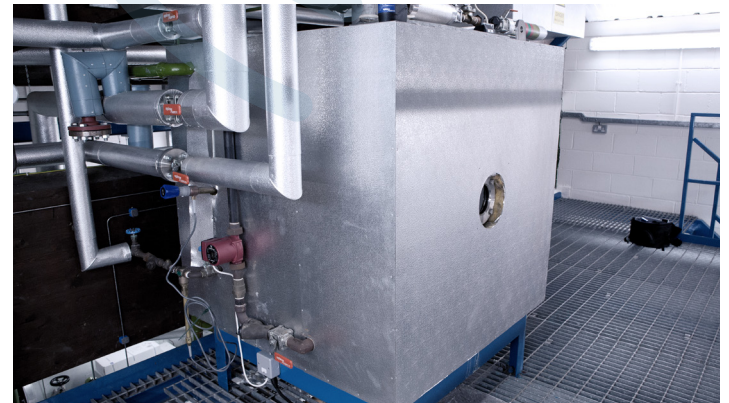
Overflowing hot water tanks are a common occurrence across many industries. The problem can be difficult to detect quickly, usually it's a symptom of a fault elsewhere within the steam system.

If undetected, thousands of litres of hot water can be wasted within a short time. This valuable resource can be retained within the steam system, reducing water consumption, fuel consumption, carbon emissions and effluent waste.

The overflow incident monitor will send an alert when an overflow occurs, catching the problem straight away, enabling prompt diagnosis and repair.



Temperature profiles of the pipework connected to the tank provide our Connected Steam Expert with the information needed to determine correct operation and working status. Temperatures outside of normal will automatically trigger alerts as soon as a problem occurs.



SUSTAINABILITY & ENERGY



Raise the alarm as soon as an incident occurs, minimising hot water losses

PROCESS PRODUCTIVITY



Maximise steam availability for the process by retaining heat energy within the steam system

MAINTENANCE & REPAIR



Our Connected Steam Expert's analysis can help diagnose the route cause of overflowing tanks.

BENEFITS

MONITOR YOUR SYSTEMS HEALTH THE RIGHT WAY



EQUIPMENT

The supply and installation of suitable, non-intrusive sensing equipment (zero downtime) and an independent wireless network, for the period of the installation.



DASHBOARD

24/7 access to Spirax Sarco's Digital Dashboard tool, providing insights into data trends and alarm threshold visualisation, for a period of 12-months.



REPORTING

Two level reporting
Operational status review and report issued within 6-12 weeks of connection. Followed by a second report towards the end of the 12-month period.



REVIEW

Each report is supported by a discussion, either in person or remote with a Spirax Sarco steam specialist.

In addition, Spirax Sarco provide an annual steam system diagnostic check and review alarm thresholds, validating both sensor and Digital Dashboard functions and settings.

EQUIPMENT SPECIFICATION

Sensors

- 2 x PT1000 temperature sensors.
- Sensing range from -180 to +250 °C, each with 2-metre cable.
- Powered by replaceable 3.6 V lithium battery with low level alert.
- IP-rating of IP65.
- For use indoors or outdoors within industrial environments.

Gateway

- Plug and play gateway with LoRaWAN interface and 4G connectivity.
- Supplied with roaming SIM card, mains power cable and LoRa antenna* (* on selected models).
- IP-rating IP20.
- For use indoors in dry environments.

DASHBOARD SPECIFICATION

Dashboard

- Accessed anywhere, any time, on any device with a web-browser.
- Data historian for remote trending of process values, in near-real-time and historically.
- Hosted on Microsoft Azure for high availability, up-time and data security.

Get connected, today!

Contact your local sales representative

[spiraxsarco.com](https://www.spiraxsarco.com)



SCAN ME

SB-P539-01-EN-ISS1

First for Steam Solutions

EXPERTISE | SOLUTIONS | SUSTAINABILITY

spirax
sarco