

SP7-10, SP7-11, SP7-12, SP7-20, SP7-21, SP7-22 and SP8-10

Installation and Maintenance Instructions



Operators must wear ear protection when commissioning the positioner

Copyright © Spirax-Sarco Limited 2022

All rights reserved

Spirax-Sarco Limited grants the legal user of this product (or device) the right to use the Work(s) solely within the scope of the legitimate operation of the product (or device). No other right is granted under this licence. In particular and without prejudice to the generality of the foregoing, the Work(s) may not be used, sold, licensed, transferred, copied or reproduced in whole or in part or in any manner or form other than as expressly granted here without the prior written consent of Spirax-Sarco Limited.

Replacing the supply air filters

Replacing the filter element

The digital positioner is equipped with a supply air filter that can collect small amounts of contaminants. The supply air filter prevents the digital positioner's sensitive pneumatic components becoming clogged or damaged.

Note

The supply air filter is not a substitute for the required supply air treatment in accordance with DIN/ISO 8573-1. If the supply air is contaminated, the supply air filter can become clogged and must be replaced.



Fig. 1 Note SP8-10 shown for reference.



Risk of injury from pressurized components

The screw plug and the filter insert can be ejected if the screw plug is loosened when the pressurized air is switched on. Only ever loosen the screw plug when the positioner is depressurized and vented.

Replacing the filter insert

1. Disconnect the supply air to the positioner and vent the positioner.
2. Loosen the screw plug using a screwdriver.
3. Remove the contaminated filter insert using tweezers.
4. Replace the new filter insert as depicted.
 - Ensure that the filter insert is aligned correctly.
 - Ensure that the O-ring sits in the housing of the SP7* correctly and is undamaged.
5. Hand-tighten the screw plug using a screwdriver.
6. For the SP8-10, also check the filter element (sieve) in the supply air inflow for contamination and damage.
7. Power-up the supply air to the positioner and check all screw connections you loosened for tightness.

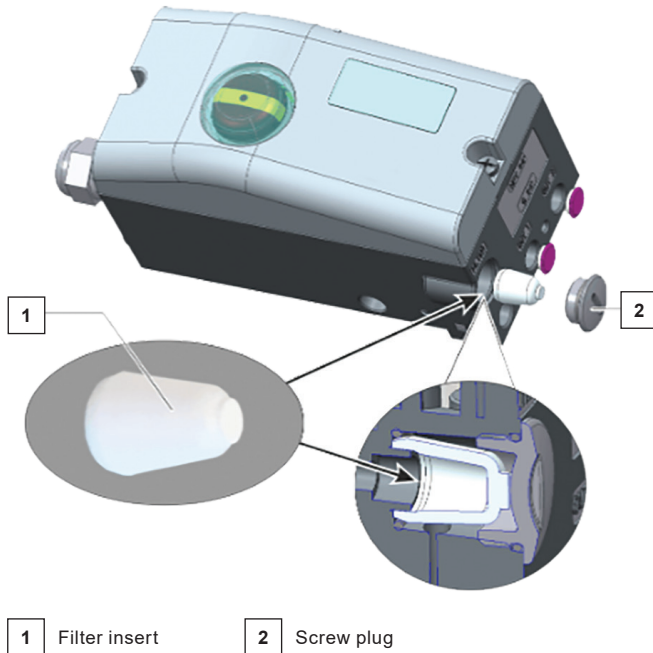


Fig. 2 Note SP7-10 shown for reference.

SP7-10, SP7-11, SP7-12, SP7-20, SP7-21, SP7-22 and SP8-10

