

Sanitary Pressure Gauge

Installation and Maintenance Instructions

1. Safety information

Safe operation of these units can only be guaranteed if they are properly installed, commissioned and maintained by a qualified person (see Section 11 of the attached Supplementary Safety Information) in compliance with the operating instructions. General installation and safety instructions for pipeline and plant construction, as well as the proper use of tools and safety equipment must also be complied with.

Isolation

Consider whether closing isolating valves will put any other part of the system or personnel at risk. Dangers might include; isolation of vents and protective devices or alarms. Ensure isolation valves are turned off in a gradual way to avoid system shocks.

Pressure

Before attempting any maintenance consider what is or may have been in the pipeline. Ensure that any pressure is isolated and safely vented to atmospheric pressure before attempting to maintain the product, this is easily achieved by fitting Spirax Sarco depressurisation valves type DV (see separate literature for details).

Do not assume that the system is depressurised even when a pressure gauge indicates zero.

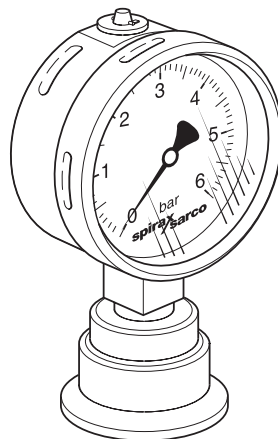
Temperature

Allow time for temperature to normalise after isolation to avoid the danger of burns and consider whether protective clothing (including safety glasses) is required.

Disposal

The product is recyclable. Care must be taken to ensure disposal of oil is carried out in accordance with national and local regulations regarding disposal of waste oil.

Please visit the Spirax Sarco product compliance web pages <https://www.spiraxsarco.com/product-compliance> for up to date information on any substances of concern that may be contained within this product. Where no additional information is provided on the Spirax Sarco product compliance web page, this product may be safely recycled and/or disposed providing due care is taken. Always check your local recycling and disposal regulations.



2. General product information

Note: For further information see the following Technical Information Sheet TI-P027-05, which gives full details.

2.1 Description

The Sanitary pressure gauge for clean steam applications is made of stainless steel and can be used in general service conditions where pulsation or vibration exists. It is suitable for corrosive environments and gaseous or liquid media that will not obstruct the pressure system. This comes complete with a pressure relief valve fitted in the top case.

2.2 Size and pipe connections

ASME BPE (Type B): 1", 1½", 2", 2½", 3"

DIN 32676 A: DN25, DN32, DN40, DN50, DN65, DN80, DN100

DIN 32676 B: DN26.9, DN33.7, DN42.4, DN48.4, DN60.3, DN76.1

2.3 Pressure/temperature limits

Maximum design pressure	Steady Full scale reading
	Fluctuating 0.9 x Full scale reading
Maximum design temperature	200 °C (392 °F)
Minimum design temperature	-20 °C (-4 °F)

2.4 Pressure range

Range 1	0 to 6 bar (0 to 87 psi)
Range 2	0 to 10 bar (0 to 145 psi)

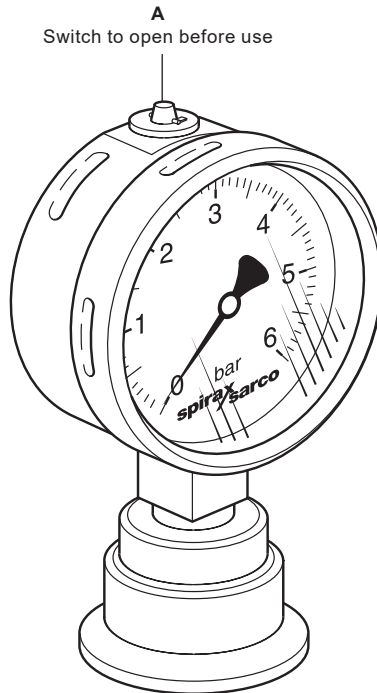
3. Installation

Note: Before actioning any installation observe the 'Safety information' in Section 1.

It is recommended that all gauges are fitted with suitable isolation valves to allow for safe maintenance / replacement. Care should be taken if the installation is exposed to frost as gauges can burst. Remove all protective caps before installation. Fittings, clamps and gaskets for pipe end connections are not supplied.

Important note

Move the top tap 'A' into the open position after installation. Failure to do this before operation could invalidate the calibration.



Caution

Do not over-tighten the sanitary clamp as this may cause the gasket to spread /extrude. It is normally only necessary to take up slack and tighten the nut by a maximum of half a turn.

4. Commissioning

After installation or maintenance ensure that the system is fully functioning. Carry out tests on any alarms or protective devices.

This product is intended to be connected into a system that can operate an EC1935 compliant process. To minimise the risk of non-intentionally added substances in the system, it is essential that an appropriate CIP (cleaning in place) cycle is carried out by the end user prior to first use in a food contact application. A list of the materials that could come directly or indirectly into contact with foodstuffs can be found in the Declaration of Compliance available for this product.

5. Operation

The Spirax Sarco pressure gauge is designed to indicate the pressure within the system.

As pressure is admitted, the bourdon tube tends to straighten out, converting pressure to displacement. The tube is linked to a pinion which is attached to a pointer, this then displays the pressure reading on a circular scale.

6. Maintenance

There are no spare parts available for the Spirax Sarco Sanitary pressure gauge. The only maintenance work necessary is regular cleaning of the laminated safety glass. Solvents should not be used to clean the window as it may impair clarity.

Note: Isolation valves should always be opened and closed slowly to avoid pressure shocks to the gauges.

7. Spare parts

There are no spare parts available for the Spirax Sarco Sanitary pressure gauge.

How to order a new product

Example: 1 off Spirax Sarco Sanitary pressure gauge having a 1½" ASME BPE sanitary clamp connection, Range 1 (0 to 6 bar).