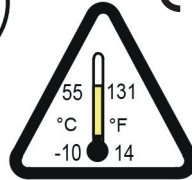


AEL Split-Range Unit Installation Instructions

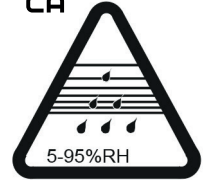
Installing the Split-Range Unit



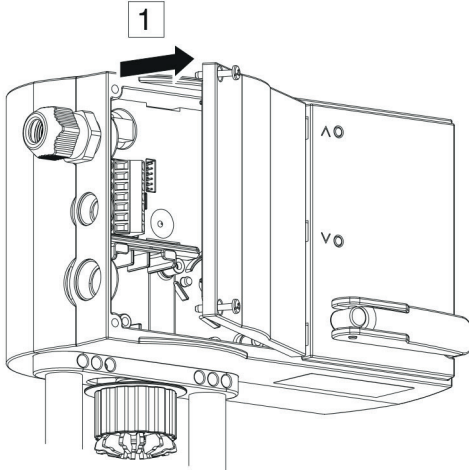
Note:
Not compatible with
Power Modules



CE UK
CA



For use in normal environments



(1 x) K35 x 20/10

T15 / 3

Fig. 1a

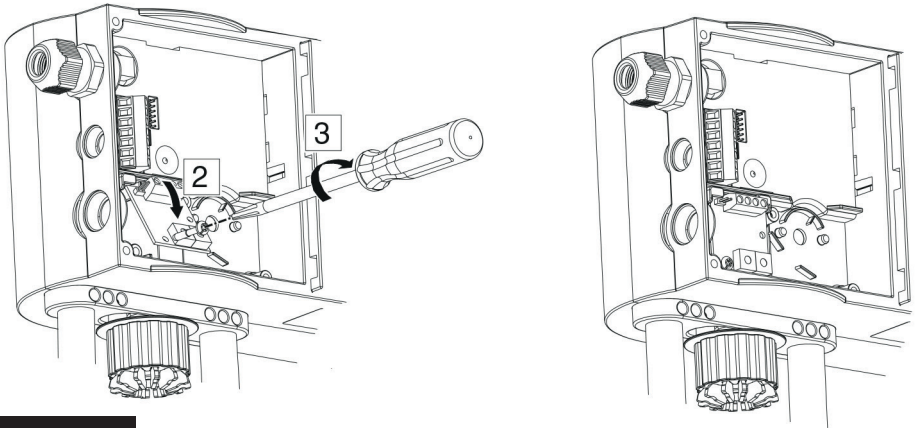


Fig. 1b

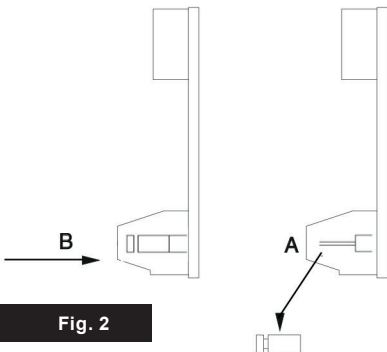
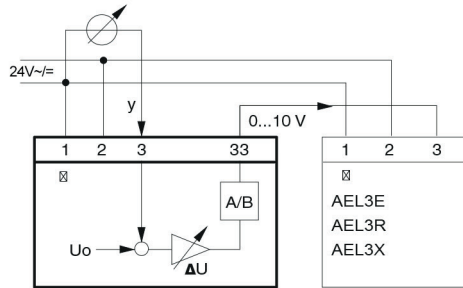
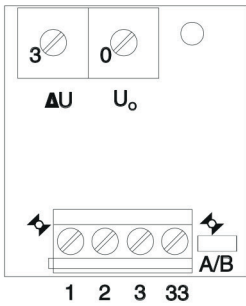
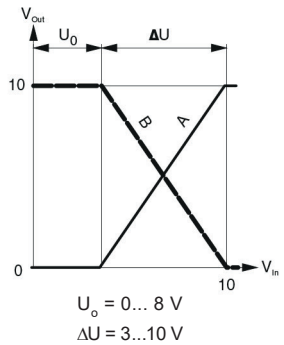
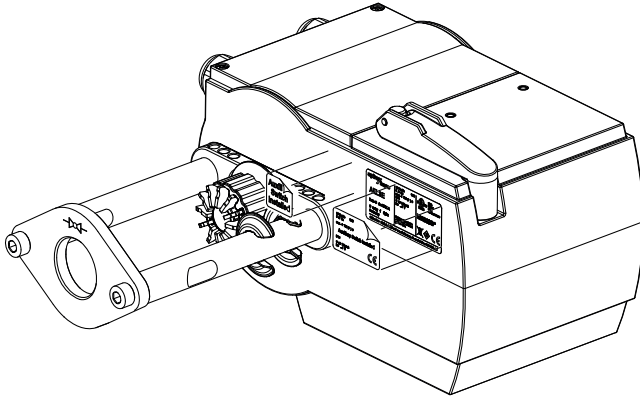


Fig. 2





		24 Vac/dc 50/60Hz max. -10T55 (60)°C IP68 Control Signal: DC 0...10V	12W 29BA E76024 2876 AVF2348F232U Temperature Indicating & Regulating Equipment
AEL3E Date Code: XXX-A Country of Origin: Germany		Equipment Intended for connection to a Class 2 power source.	
Spirax-Sarco Limited, Charlton House, Cheltenham, Gloucestershire, GL53 8ER, GB			

		24 Vac/dc 50/60Hz max. -10T55 (60)°C IP68 Control Signal: DC 0...10V Pollution Deg. 3 Overvoltage Cat. III	
AEL3E Date Code: XXX-A Country of Origin: Germany		Equipment Intended for connection to a Class 2 power source.	
Spirax-Sarco Limited, Charlton House, Cheltenham, Gloucestershire, GL53 8ER, GB			

24 Vac/dc 50/60Hz max. -10T55 (60)°C IP68 Control Signal: DC 0...10V Pollution Deg. 3 Overvoltage Cat. III	
---	--

Note: Affix overlay label as shown, as Split-Range Unit is not UL approved.

If Auxiliary Switch is installed, DO NOT use Split-Range unit overlay label. Protection Class on Auxiliary Switch will apply and take precedence.

Auxiliary Switch Installed

2-10 Vdc Split-Range Unit Installed

		24 Vac/dc 50/60Hz max. -10T55 (60)°C IP68 Control Signal: DC 0...10V Pollution Deg. 3 Overvoltage Cat. III	
AEL3E Date Code: XXX-A Country of Origin: Germany		Equipment Intended for connection to a Class 2 power source.	
Spirax-Sarco Limited, Charlton House, Cheltenham, Gloucestershire, GL53 8ER, GB			

Affix the supplied add-on label in a prominent position close to the product label as shown

Note: Auxiliary Switch Installed label shown, may or may not be installed and is shown for Split Range unit label positioning only.

Fig. 3

AEL Split-Range Unit



